

SUPPLEMENT

AIP URUGUAY

Telephone: 598 2604 0408 ext.
5101, 5203
Telefax: 598 2604 0067
AFTN: SUMUYNXX
e-mail: aispub@dinacia.gub.uy

Dirección Nacional de Aviación Civil e Infraestructura Aeronáutica
Departamento AIS
Aeropuerto Intl de Carrasco "Gral. Cesáreo L. Berisso"
14000 Canelones

AIP/SUP
NR S 002
17 APR 2026

NEW INSTRUMENT APPROACH PROCEDURES

SUMU ILS V RWY 25 and LOC V RWY 25

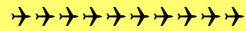
- The following Instrument Approach Procedures for Carrasco International Airport shall come into effect on **17 APR 2026**:
 - ILS V RWY 25
 - LOC V RWY 25
- The following Instrument Approach Procedure **is discontinued**:
 - ILS Z RWY 25 (AIP, pages AD 2.9-45, 2.9-46)
- New information to be considered as a result of these changes:

Reference	Item	Value
RWY 07	COORD THR RWY 07	345031.64S 0560212.97W
	ELEV THR RWY 07	18 M / 59 FT
	COORD RWY END 07	345038.39S 0560224.06W
	ELEV RWY END RWY 07	16 M / 52 FT
RWY 25	COORD THR RWY 25	344939.54S 0560047.45W
	ELEV THR RWY 25	32 M / 105 FT
	COORD RWY END RWY 25	344936.67S 0560042.74W
	ELEV RWY END RWY 25	33 M / 108 FT
ILS Cat IIIB	ILS LLZ FREQ	111.9 MHZ
	ILS LLZ	345043.32S 0560232.16W
	ILS GS FREQ	331.1 MHZ
	ILS GS	344944.03S 0560102.84W
	DME 25 ID	56X
	DME 25	344943.98S 0560102.83W

4. AIP pages that are affected by these changes:

AD 2.9-6, AD 2.9-11, AD 2.9-27, AD 2.9-28, AD 2.9-29, AD 2.9-30, AD 2.9-31, AD 2.9-37, AD 2.9-41, AD 2.9-42, AD 2.9-50, AD 2.9-53, AD 2.9-54, AD 2.9-56, AD 2.9-57, AD 2.9-58.

***Remember to register the inclusion of AIRAC amendment on page GEN 0.3-1
Record of AIP Supplements***

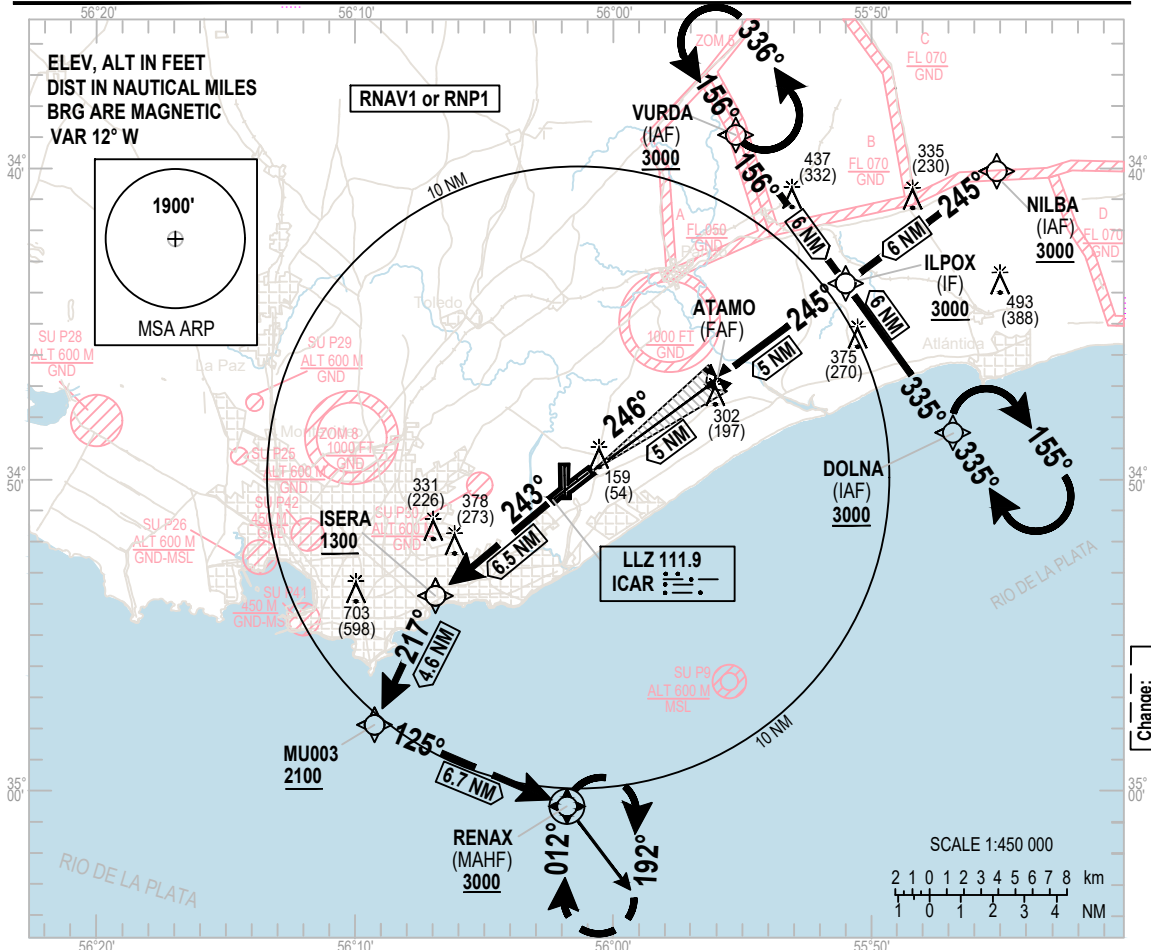


INSTRUMENT
APPROACH
CHART - ICAO

AERODROME ELEV **105 FT**
HEIGHTS RELATED TO
THR RWY 25 - ELEV 105 FT

TWR 118.1 - 121.8
APP 119.2 - 120.2

MONTEVIDEO/Intl
Carrasco "Gral. Av. Cesáreo L. Berisso"
ILS V RWY 25



Change:
New chart

MISSED
APPROACH

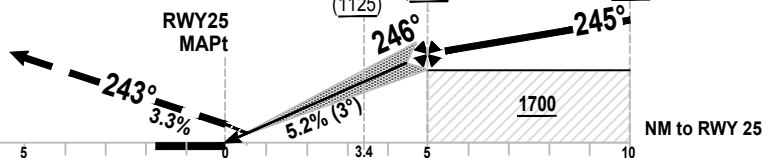
NOTE:
3.3% of MNM missed approach gradient,
up to 2100 FT, established by airspace.

Climb up to 3000 FT:
DCT to ISERA, cross with
1300 FT or superior, then to MU003,
cross with 2100 FT or superior,
then turn left
to RENAX for hold.

ILS RDH 53

TRANSITION ALT 3000

ATAMO	ILPOX
FAF	IF
1750	3000
(1645)	(2895)
SDF	
1230	
(1125)	



ELEV 105
(THR RWY 25)

OCA/H		A	B	C	D							
Straight-in Approach	ILS	305 (200)										
	VIS	RVR 750 M - 1200 M ALS INOP 800 M - 1200 M ALS INOP										
RVR 550 M - Use: HUDLS (Head-Up Display Landing System) or equivalent approved system, or engaged Autopilot, or Flight Director to DH.												
ATAMO - RWY25 (5 NM)						KT	80	100	120	140	160	
Vertical speed of descent 5,2%						Feet/Min	425	531	637	743	849	
NM RWY 25						5	4	3	2	1.0	THR	
Altitud						1750	1432	1113	795	476	159	
Height						1645	1327	1008	690	371	53	

INSTRUMENT
APPROACH
CHART - ICAO

AERODROME ELEV **105 FT**
HEIGHTS RELATED TO
THR RWY 25 - ELEV 105 FT

TWR 118.1 - 121.8
APP 119.2 - 120.2

MONTEVIDEO/Intl
Carrasco "Gral. Av. Cesáreo L. Berisso"
ILS V RWY 25

TABULAR DESCRIPTION

ILS V RWY 25											
Serial Number	Path Descriptor	Waypoint Identifier	Fly-Over	Course °M(°T)	Magnetic Variation	Distance (NM)	Turn Direction	Altitude (FT)	Speed Limit (Knots/h)	VPA/TCH	Navigation Specification
010	IF	NILBA	-	-	-	-	-	+3000	-	-	RNAV 1
020	TF	ILPOX	-	245(233.4)	-	6.00	-	+3000	-	-	RNAV 1
010	IF	VURDA	-	-	-	-	-	+3000	-	-	RNAV 1
020	TF	ILPOX	-	156(143.5)	-	6.00	-	+3000	-	-	RNAV 1
010	IF	DOLNA	-	-	-	-	-	+3000	-	-	RNAV 1
020	TF	ILPOX	-	335(323.4)	-	6.00	-	+3000	-	-	RNAV 1
010	IF	ILPOX	-	-	-	-	-	+3000	-	-	RNAV 1
020	TF	ATAMO	-	245(233.5)	-	5.00	-	+1750	-	-3.0°	RNAV 1
040	TF	RWY25	Yes	246(233.5)	-	5.01	-	158	-	-	RNAV 1
050	TF	ISERA	-	243(231.4)	-	6.46	-	+1300	-	-	RNAV 1
060	TF	MU003	-	216(203.9)	-	4.58	-	+2100	-	-	RNAV 1
070	TF	RENAX	Yes	125(113.3)	-	6.74	-	+3000	-	-	RNAV 1
080	HM	RENAX	Yes	012(360.0)	-	-	R	+3000	-	-	RNAV 1

WAYPOINT LIST

ILS V RWY 25	
Waypoint Identifier	Coordinates
NILBA	34°40'07.21"S 055°45'11.33"W
VURDA	34°38'52.30"S 055°55'21.80"W
DOLNA	34°48'31.70"S 055°46'41.63"W
ILPOX	34°43'42.08"S 055°51'01.97"W
ATAMO	34°46'40.92"S 055°55'54.55"W
RWY25	34°49'39.54"S 056°00'47.45"W
ICAR (LLZ)	34°50'43.32"S 056°02'32.16"W
ISERA	34°53'42.70"S 056°06'54.22"W
MU003	34°57'52.03"S 056°09'15.47"W
RENAX	35°00'32.19"S 056°01'43.22"W

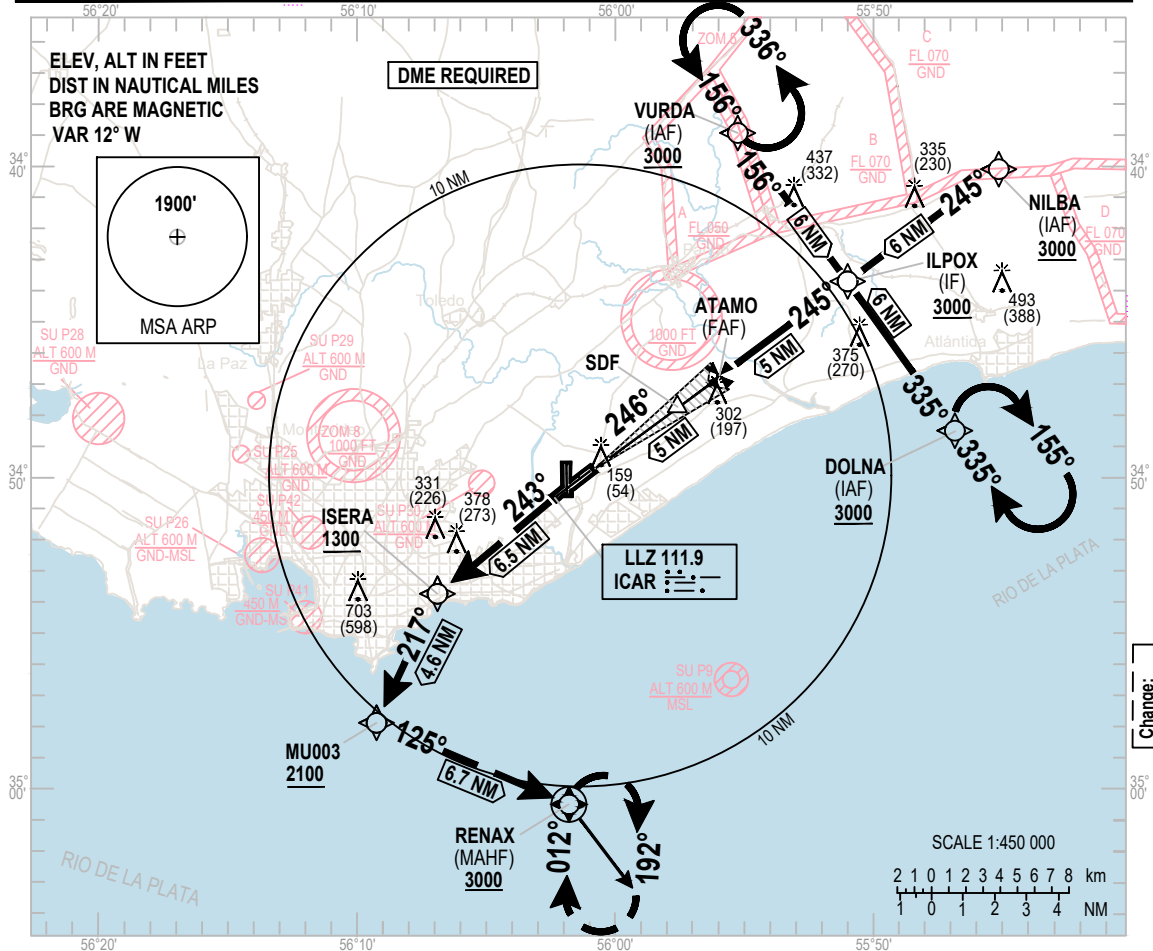
Change.
New chart

INSTRUMENT
APPROACH
CHART - ICAO

AERODROME ELEV **105 FT**
HEIGHTS RELATED TO
THR RWY 25 - ELEV 105 FT

TWR 118.1 - 121.8
APP 119.2 - 120.2

MONTEVIDEO/Intl
Carrasco "Gral. Av.
Cesáreo L. Berisso"
LOC V RWY 25



Change:
New chart

MISSED
APPROACH

NOTE:
3.3% of MNM missed approach gradient,
up to 2100 FT, established by airspace.

ILS RDH 53

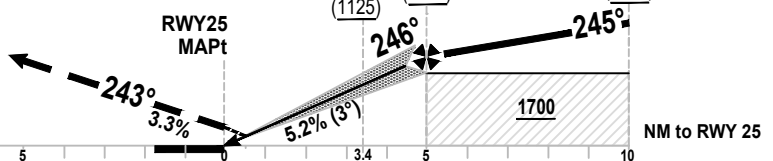
TRANSITION ALT 3000

Climb up to 3000 FT:
DCT to ISERA, cross with
1300 FT or superior, then to MU003,
cross with 2100 FT or superior,
then turn left
to RENAX for hold.

RWY25
MAPt

ATAMO
SDF 1230 (1125)
FAF 1750 (1645)

ILPOX
IF 3000 (2895)



ELEV 105
(THR RWY 25)

OCA/H		A	B	C	D						
LOC		450 (345)									
Straight-in Approach	VIS	900 M - 1600 M ALS INOP									
						KT	80	100	120	140	160
		ATAMO - RWY25 (5 NM)									
		Vertical speed of descent 5.2%				Feet/Min	425	531	637	743	849
		NM RWY 25				5	4	3	2	1.0	THR
		Altitude				1750	1432	1113	795	476	159
		Height				1645	1327	1008	690	371	53

INSTRUMENT
APPROACH
CHART - ICAO

AERODROME ELEV **105 FT**
HEIGHTS RELATED TO
THR RWY 25 - ELEV 105 FT

TWR 118.1 - 121.8
APP 119.2 - 120.2

MONTEVIDEO/Intl
Carrasco "Gral. Av. Cesáreo L. Berisso"
LOC V RWY 25

TABULAR DESCRIPTION

LOC V RWY 25											
Serial Number	Path Descriptor	Waypoint Identifier	Fly-Over	Course °M(°T)	Magnetic Variation	Distance (NM)	Turn Direction	Altitude (FT)	Speed Limit (Knots/h)	VPA/TCH	Navigation Specification
010	IF	NILBA	-	-	-	-	-	+3000	-	-	RNAV 1
020	TF	ILPOX	-	245(233.4)	-	6.00	-	+3000	-	-	RNAV 1
010	IF	VURDA	-	-	-	-	-	+3000	-	-	RNAV 1
020	TF	ILPOX	-	156(143.5)	-	6.00	-	+3000	-	-	RNAV 1
010	IF	DOLNA	-	-	-	-	-	+3000	-	-	RNAV 1
020	TF	ILPOX	-	335(323.4)	-	6.00	-	+3000	-	-	RNAV 1
010	IF	ILPOX	-	-	-	-	-	+3000	-	-	RNAV 1
020	TF	ATAMO	-	245(233.5)	-	5.00	-	+1750	-	-3.0°	RNAV 1
020	TF	SDF	-	245(233.5)	-	1.61	-	+1750	-	-3.0°	RNAV 1
040	TF	RWY25	Yes	246(233.5)	-	3.39	-	158	-	-	RNAV 1
050	TF	ISERA	-	243(231.4)	-	6.46	-	+1300	-	-	RNAV 1
060	TF	MU003	-	217(205.0)	-	4.58	-	+2100	-	-	RNAV 1
070	TF	RENAX	Yes	125(113.3)	-	6.74	-	+3000	-	-	RNAV 1
080	HM	RENAX	Yes	012(360.0)	-	-	R	+3000	-	-	RNAV 1

WAYPOINT LIST

LOC V RWY 25	
Waypoint Identifier	Coordinates
NILBA	34°40'07.21"S 055°45'11.33"W
VURDA	34°38'52.30"S 055°55'21.80"W
DOLNA	34°48'31.70"S 055°46'41.63"W
ILPOX	34°43'42.08"S 055°51'01.97"W
ATAMO	34°46'40.92"S 055°55'54.55"W
RWY25	34°49'39.54"S 056°00'47.45"W
ICAR (LLZ)	34°50'43.32"S 056°02'32.16"W
ISERA	34°53'42.70"S 056°06'54.22"W
MU003	34°57'52.03"S 056°09'15.47"W
RENAX	35°00'32.19"S 056°01'43.22"W
SDF	34°47'38.54"S 055°57'29.10"W

Change.
New chart