

AD 2. AERODROMES**SUPU AD 2.10-1 AERODROME LOCATION INDICATOR AND NAME**

SUPU - PAYSANDÚ/Intl Tydeo Larre Borges

SUPU 2.10-2 AERODROME GEOGRAPHICAL AND ADMINISTRATIVE DATA

1	<i>ARP coordinates and site at AD</i>	322147S 0580359W Location over the RWY centre line at 750 M of THR RWY 10
2	<i>Direction and distance from (city)</i>	6 KM S from the city of Paysandú
3	<i>Elevation/Reference temperature</i>	54 M (177 FT) / 32°C
4	<i>Geoid undulation at AD ELEV PSN</i>	17 M
5	<i>MAG VAR/Annual change</i>	11° W (JAN 2020) / 0.17° increasing
6	<i>AD operator, address, telephone, telefax, e-mail address, AFS address, website address</i>	Dirección Nacional de Aviación Civil e Infraestructura Aeronáutica Aeropuerto Internacional "Tydeo Larre Borges" C.P. 60000 Paysandú Tel: 4722 2199 Telefax: 4722 2079 e-mail: supu@dinacia.gub.uy AFS: SUPUYTYX
7	<i>Types of traffic permitted (IFR/VFR)</i>	☛VFR
8	<i>Remarks</i>	Nil

SUPU AD 2.10-3 OPERATIONAL HOURS

1	<i>AD Operator</i>	MON - FRI 10:00 to 22:00 UTC. SAR, humanitarian, sanitary and of State flights O/R
2	<i>Customs and immigration</i>	O/R
3	<i>Health and sanitation</i>	In the city
4	<i>AIS Briefing Office</i>	Nil
5	<i>ATS Reporting Office (ARO)</i>	As AD Operator
6	<i>MET Briefing Office</i>	Nil
7	<i>ATS</i>	MON - FRI 10:00 to 22:00 UTC. SAR, humanitarian, sanitary and of State flights O/R
8	<i>Fuelling</i>	Nil
9	<i>Handling</i>	As AD Operator
10	<i>Security</i>	H24
11	<i>De-icing</i>	Nil
12	<i>Remarks</i>	Nil

SUPU AD 2.10-4 HANDLING SERVICES AND FACILITIES

1	<i>Cargo-handling facilities</i>	☛ Nil
2	<i>Fuel/oil types</i>	☛ Fuel: Nil / Oil: Nil
3	<i>Fuelling facilities/capacity</i>	Nil
4	<i>De-icing facilities</i>	Nil
5	<i>Hangar space for visiting aircraft</i>	Nil
6	<i>Repair facilities for visiting aircraft</i>	Nil
7	<i>Remarks</i>	GPU 28 Volts 2000 Amperes maximum

SUPU AD 2.10-5 PASSENGER FACILITIES

1	<i>Hotels</i>	In the city
2	<i>Restaurants</i>	In the city
3	<i>Transportation</i>	Taxis O/R
4	<i>Medical facilities</i>	In the city
5	<i>Bank and Post Office</i>	Nil
6	<i>Tourist Office</i>	Nil
7	<i>Remarks</i>	Nil

SUPU AD 2.10-6 RESCUE AND FIRE FIGHTING SERVICES

1	<i>AD category for fire fighting</i>	Manual extinguishers
2	<i>Rescue equipment</i>	Nil
3	<i>Capability for removal of disabled aircraft</i>	Nil
4	<i>Remarks</i>	In case of major accident, FAU aircraft support immediate response, FAU rescue personnel, firefighters and doctors specializing in severe polytrauma.

SUPU AD 2.10-7 SEASONAL AVAILABILITY - CLEARING

1	<i>Types of clearing equipment</i>	Nil
---	------------------------------------	-----

SUPU AD 2.10-8 APRONS, TAXIWAYS AND CHECK LOCATIONS/POSITIONS DATA

1	<i>Apron surface and strength</i>	Surface: bituminous treatment CTN loose stones Strength: 21.000 KG
2	<i>Taxiway width, surface and strength</i>	Width: 13 M CTN loose stones Surface: bituminous treatment Strength: 21.000 KG
3	<i>Altimeter checkpoint location and elevation</i>	THR RWY 10 (322146.35S/0580428.20W) 40 M
4	<i>VOR/INS checkpoints</i>	Nil
5	<i>Remarks</i>	Nil

SUPU AD 2.10-9 SURFACE MOVEMENT GUIDANCE AND CONTROL SYSTEM AND MARKINGS

1	<i>Use of aircraft stand ID signs, TWY guide lines and visual docking/parking guidance system of aircraft stands</i>	Nil
2	<i>RWY and TWY markings and LGT</i>	RWY: Designation and RWY centre line TWY: Designation of centre line.
3	<i>Stop bars</i>	TWY 1 and 2
4	<i>Remarks</i>	Nil

SUPU AD 2.10-10 AERODROME OBSTACLES

<i>In approach/TKOF areas</i>			<i>In circling area and at AD</i>		<i>Remarks</i>	
1			2			3
<i>RWY/Area affected</i>	<i>Obstacle type</i>	<i>Elevation</i>	<i>Obstacle type</i>	<i>Elevation</i>	<i>Coordinates</i>	Nil
	<i>Markings/LGT</i>	<i>Coordinates</i>	<i>Markings/LGT</i>	<i>Coordinates</i>		
A	b	c	a	b		
No data						

SUPU AD 2.10-11 METEOROLOGICAL INFORMATION PROVIDED

1	<i>Associated MET Office</i>	PAYSANDÚ
2	<i>Hours of service MET Office outside hours</i>	☛ Nil
3	<i>Office responsible for TAF preparation Periods of validity</i>	Surveillance MET Office CARRASCO O/R
4	<i>Trend forecast Interval of issuance</i>	Nil
5	<i>Briefing/consultation provided</i>	O/R
6	<i>Flight documentation Language(s) used</i>	Nil
7	<i>Charts and other information available for briefing or consultation</i>	Nil
8	<i>Supplementary equipment available for providing information</i>	Nil
9	<i>ATS units provided with information</i>	PAYSANDÚ AFIS
10	<i>Additional information (limitation of service, etc.)</i>	Thermometer U/S

SUPU AD 2.10-12 RUNWAY PHYSICAL CHARACTERISTICS

<i>Designations RWY NR</i>	<i>TRUE BRG</i>	<i>Dimensions of RWY (M)</i>	<i>Strength (PCN) and surface of RWY and SWY</i>	<i>THR coordinates. RWY end coordinates. THR geoid undulation</i>	<i>THR elevation and highest elevation of TDZ of precision APP RWY</i>
1	2	3	4	5	6
10	☛091.99°	900 x 18	5.700 KG Bituminous treatment	322146.37S 0580428.02W 322146.37S 0580428.02W GUND 17.4 M	THR 40 M/131 FT
28	☛271.99°	900 x 18	5.700 KG Bituminous treatment	- - 322147.39S 0580353.47W GUND 17.4 M	THR 46 M/151 FT
02	☛008.87°	1 500 x 30	31/F/B/X/T Asphaltic concrete	322212.32S 0580348.10W 322212.32S 0580348.10W GUND 17.4 M	THR 49 M/161 FT
20	☛188.87°	1 500 x 30	31/F/B/X/T Asphaltic concrete	322124.18S 0580339.25W 322124.18S 0580339.25W GUND 17.4 M	THR 38 M/125 FT
<i>Slope of RWY-SWY</i>	<i>SWY dimensions (M)</i>	<i>CWY dimensions (M)</i>	<i>Strip dimensions (M)</i>	<i>OFZ</i>	<i>Remarks</i>
7	8	9	10	11	12
+2.3%/-1.6%/+1.2% (370 M) (290 M) (240 M)	Nil	Nil	Nil	Nil	CTN loose stones on RWY
-1.2%/+1.6%/-2.3% (240 M) (290 M) (370 M)	Nil	Nil	Nil	Nil	THR displaced 230 M CTN loose stones on RWY
+0.3%/-0.6%/+0.2%/-1.2% (100 M) (500 M) (200 M) (700 M)	Nil	Nil	1 675 x 150	Nil	CTN stone powder on RWY
+1.2%/-0.2%/+0.6%/-0.3% (700 M) (200 M) (500 M) (100 M)	Nil	Nil	1 675 x 150	Nil	CTN stone powder on RWY

SUPU AD 2.10-13 DECLARED DISTANCES

<i>RWY Designator</i>	<i>TORA (M)</i>	<i>TODA (M)</i>	<i>ASDA (M)</i>	<i>LDA (M)</i>	<i>Remarks</i>
1	2	3	4	5	6
10	900	990	1 000	900	Nil
28	990	990	990	900	Nil
02	1 500	1 500	1 500	1 500	Nil
20	1 500	1 500	1 500	1 500	Nil

SUPU AD 2.10-14 APPROACH AND RUNWAY LIGHTING

<i>RWY Desig- nator</i>	<i>APCH LGT type LEN INTST</i>	<i>THR LGT colour WBAR</i>	<i>VASIS (MEHT) PAPI</i>	<i>TDZ, LGT LEN</i>	<i>RWY Centre Line LGT Length, spacing, colour, INTST</i>	<i>RWY edge LGT LEN, spacing colour INTST</i>	<i>RWY End LGT colour WBAR</i>	<i>SWY LGT LEN (M) colour</i>	<i>Remarks</i>
1	2	3	4	5	6	7	8	9	10
10	Nil	☛ Nil	Nil	Nil	Nil	☛ Nil	☛ Nil	Nil	Nil
28	Nil	☛ Nil	Nil	Nil	Nil	☛ Nil	☛ Nil	Nil	Nil
02	Nil	Verdes	Nil	Nil	Nil	1500 M, 60 M, blancas 300 M, 60 M Ámbar	Rojas	Nil	Nil
20	SALS 420 M LIM	Verdes	PAPI	Nil	Nil	1500 M, 60 M, blancas 300 M, 60 M Ámbar	Rojas	Nil	Nil

SUPU AD 2.10-15 OTHER LIGHTING, SECONDARY POWER SUPPLY

1	<i>ABN/IBN location, characteristics and hours of operation</i>	ABN: in the building, white and green alternate, 25 flashes per minute. Hours: as AD, other O/R IBN: Nil
2	<i>LDI location and LGT Anemometer location and LGT</i>	WDI: 150 M N from ARP, not lighted Anemometer: Nil
3	<i>TWY edge and centre line lighting</i>	Edge: all the TWY Centre: Nil
4	<i>Secondary power supply/switch-over time</i>	Secondary power supply: 80 KW manual generator. Switch-over time: 5 SEC
5	<i>Remarks</i>	Nil

SUPU AD 2.10-16 HELICOPTER LANDING AREA

1	<i>Coordinates TLOF or THR of FATO</i>	Nil
2	<i>TLOF and/or FATO elevation M/FT</i>	Nil
3	<i>TLOF and FATO area dimensions, surface, strength, marking</i>	Nil
4	<i>True and MAG BRG FATO</i>	Nil
5	<i>Declared distance available</i>	Nil
6	<i>APP and FATO lighting</i>	Nil
7	<i>Remarks</i>	Nil

SUPU AD 2.10-17 ATS AIRSPACE

1	<i>Designation and lateral limits</i>	PAYSANDÚ FIZ Arc, radius 10 NM (18.5 KM) centred at 322147S/0580359W limited by Montevideo FIR
2	<i>Vertical limits</i>	GND up to FL 055
3	<i>Airspace classification</i>	G
4	<i>ATS unit call sign Language(s)</i>	Paysandú Information Spanish
5	<i>Transition altitude</i>	900 M
6	<i>Remarks</i>	Nil

SUPU AD 2.10-18 ATS COMMUNICATION FACILITIES

<i>Service designation</i>	<i>Call sign</i>	<i>Frequency</i>	<i>Hours of operation</i>	<i>Remarks</i>
1	2	3	4	5
AFIS	Paysandú Aerodrome Information	118.2 MHZ	As AD	Nil

SUPU AD 2.10-19 RADIO NAVIGATION AND LANDING AIDS

<i>Type of aid, MAG VAR, Type of supported OP (for VOR/ILS/MLS, give declination)</i>	<i>ID</i>	<i>Frequency</i>	<i>Hours of operation</i>	<i>Position of transmitting antenna coordinates</i>	<i>Elevation of DME transmitting antenna</i>	<i>Remarks</i>
1	2	3	4	5	6	7
Nil						

SUPU AD 2.10-22 FLIGHT PROCEDURES

✈ IFR takeoff minimums

✈ The minimum applicable for take-off in terms of ceiling and visibility shall be the minimum expected for the instrumental approach procedure published for the runway in use. If a visual circulation is necessary, the minimums published for the runway in use shall be applied.

- a) ✈ Aircraft must be equipped with the necessary instruments for the operation;
- b) ✈ the necessary radio aids must be operational

✈ IFR landing minimums

✈ The minimum necessary for landing in terms of ceiling and visibility, shall be the minimum for the instrumental approach procedure published for the runway in use.

SUPU AD 2.10-24 CHARTS RELATED TO AN AERODROME

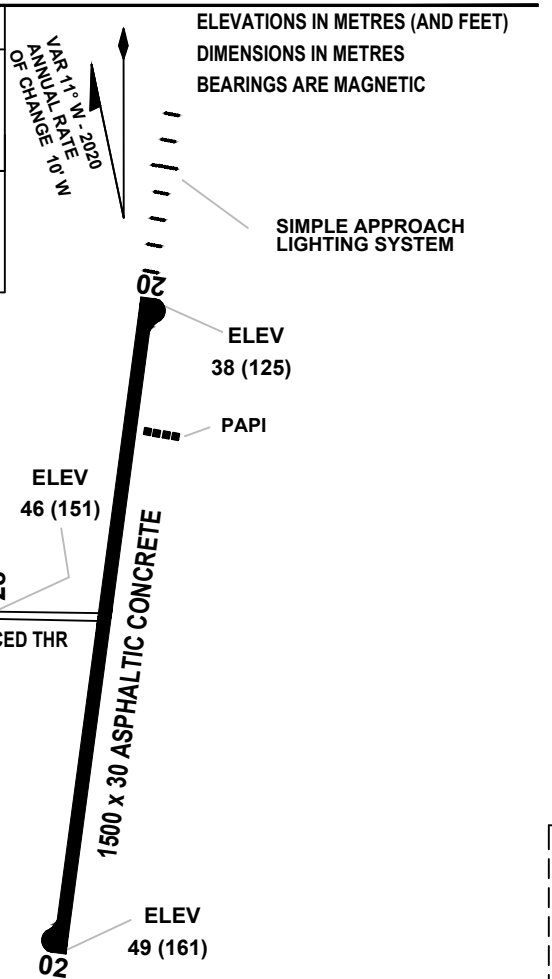
Aerodrome/Heliport Chart - ICAO 02/20.....	AD 2.10-11
Aerodrome/Heliport Chart - ICAO 10/28.....	AD 2.10-13
● Instrument Approach Chart - ICAO RNAV (GNSS) RWY 20	AD 2.10-15

AERODROME/HELIPORT **32°21'47"S ELEV 54**
CHART - ICAO **058°03'59"W (177)**

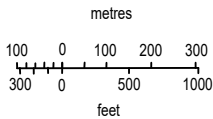
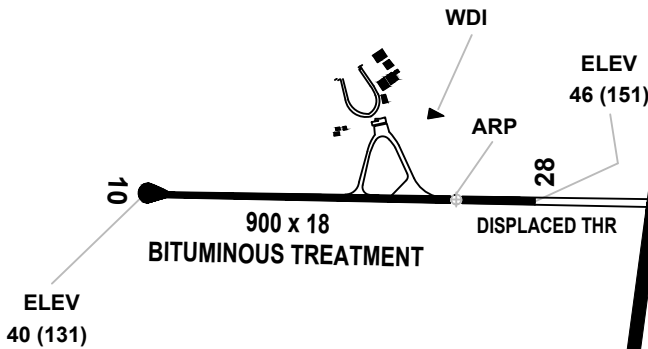
AFIS 118.2
APRON 118.2

PAYSANDU/Intl
Tydeo Larre Borges

RWY	DIRECTION	THR	GUND	BEARING STRENGTH
10	103°	32°21'46.37"S 58°04'28.02"W	17.4 M	Apron, Runway and Taxiway
28	283°	32°21'47.39"S 58°03'53.47"W	17.4 M	
02	020°	32°22'12.32"S 58°03'48.10"W	17.4 M	31/F/B/X/T
20	200°	32°21'24.18"S 58°03'39.25"W	17.4 M	

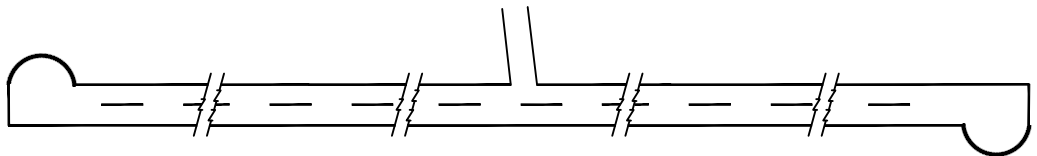


TAXIWAYS 13 WIDE

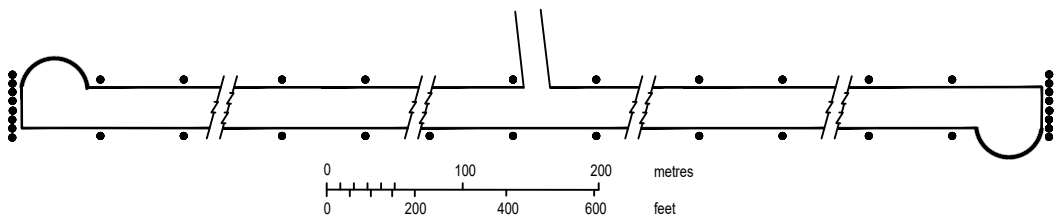


Change:
VAR and DIRECTION

MARKING AIDS RWY 02/20 AND EXIT TWY



LIGHTING AIDS RWY 02/20 AND EXIT TWY



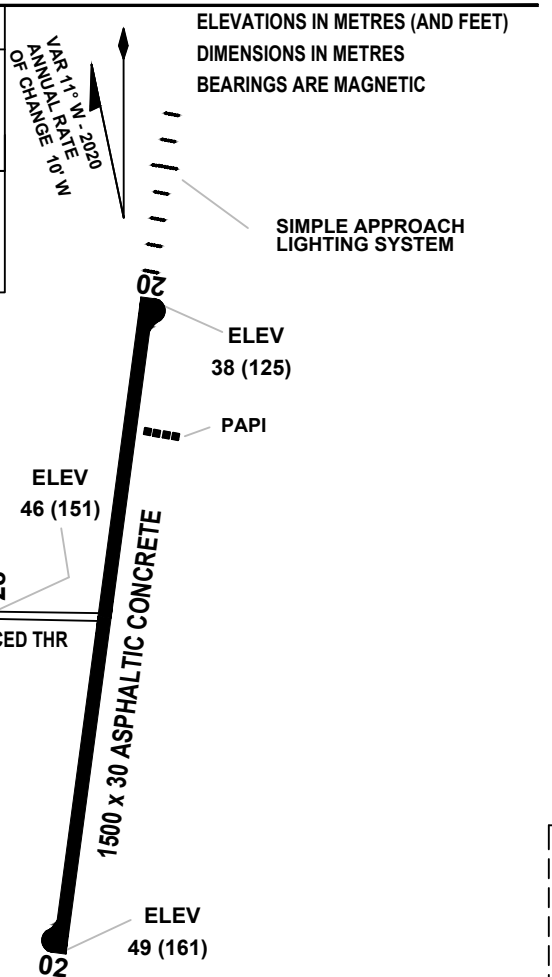
**INTENTIONALLY
LEFT BLANK**

AERODROME/HELIPORT **32°21'47"S ELEV 54**
CHART - ICAO **058°03'59"W (177)**

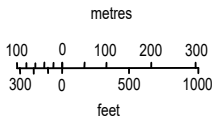
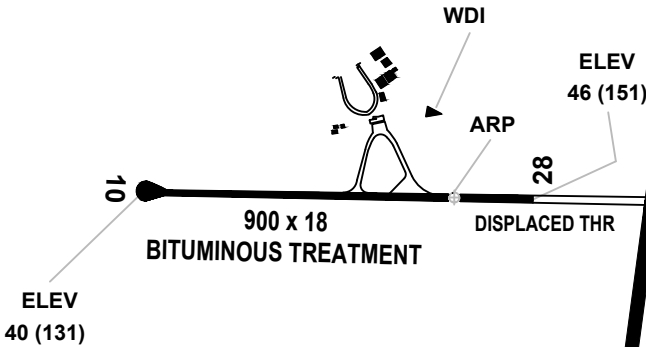
AFIS 118.2
APRON 118.2

PAYSANDU/Intl
Tydeo Larre Borges

RWY	DIRECTION	THR	GUND	BEARING STRENGTH
10	103°	32°21'46.37"S 58°04'28.02"W	17.4 M	Apron, Runway and Taxiway
28	283°	32°21'47.39"S 58°03'53.47"W	17.4 M	
02	020°	32°22'12.32"S 58°03'48.10"W	17.4 M	31/F/B/X/T
20	200°	32°21'24.18"S 58°03'39.25"W	17.4 M	

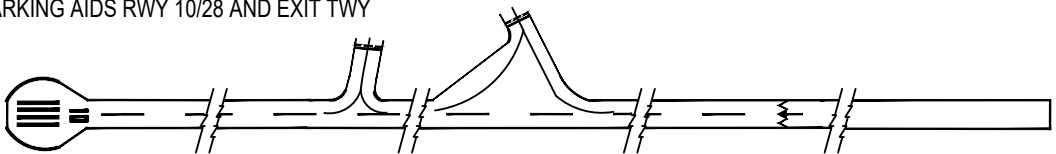


TAXIWAYS 13 WIDE

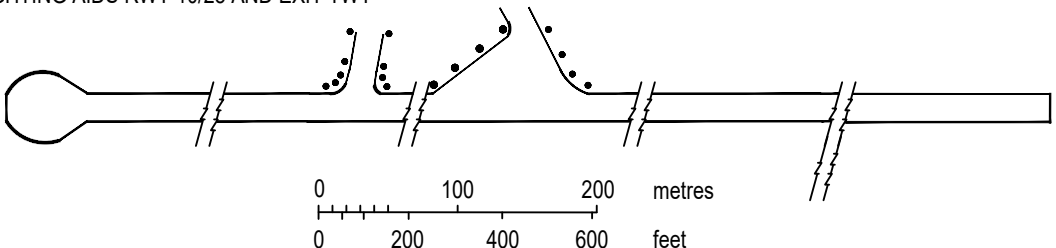


Change:
VAR and DIRECTION

MARKING AIDS RWY 10/28 AND EXIT TWY



LIGHTING AIDS RWY 10/28 AND EXIT TWY



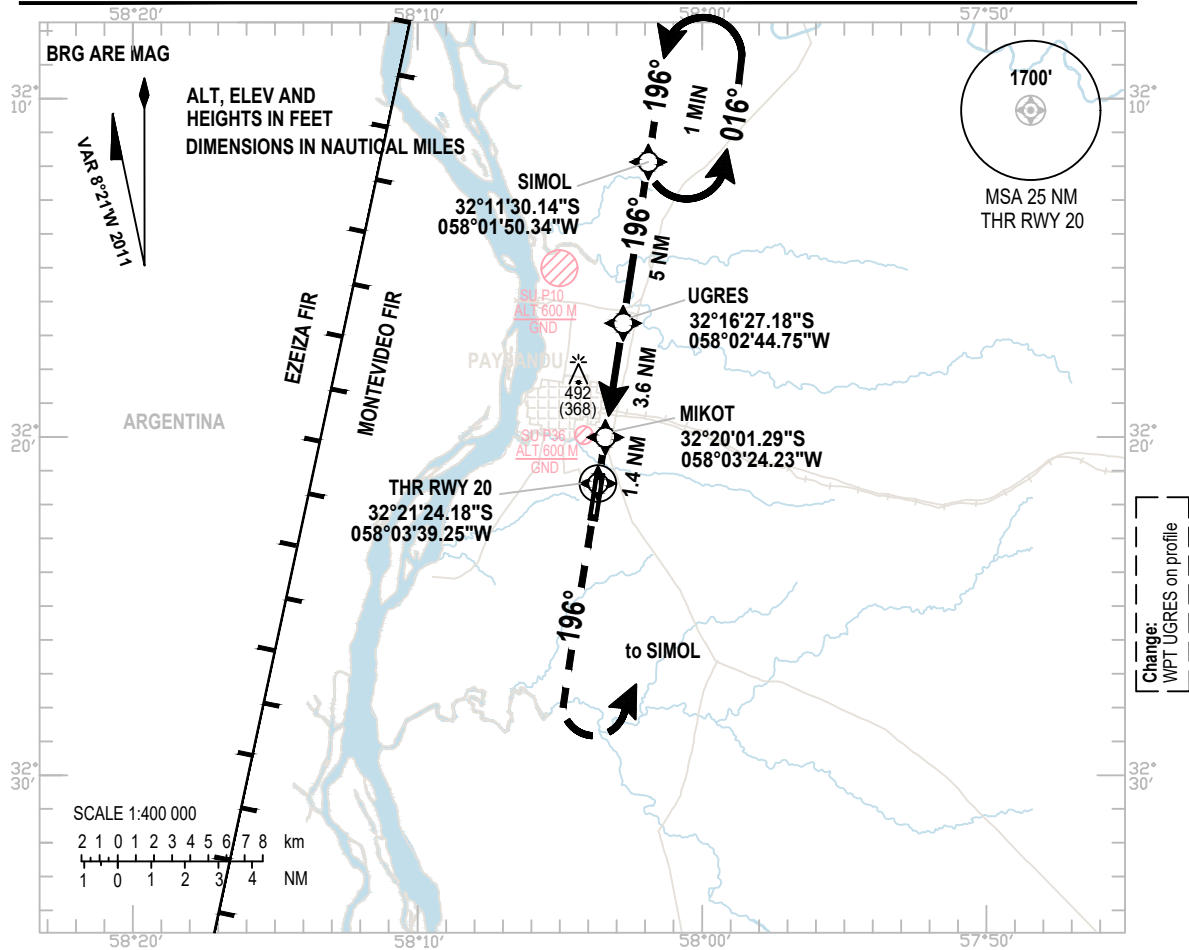
**INTENTIONALLY
LEFT BLANK**

INSTRUMENT
APPROACH
CHART - ICAO

AERODROME ELEV **177 FT**
HEIGHTS RELATED TO
THR RWY 20 - ELEV 124 FT

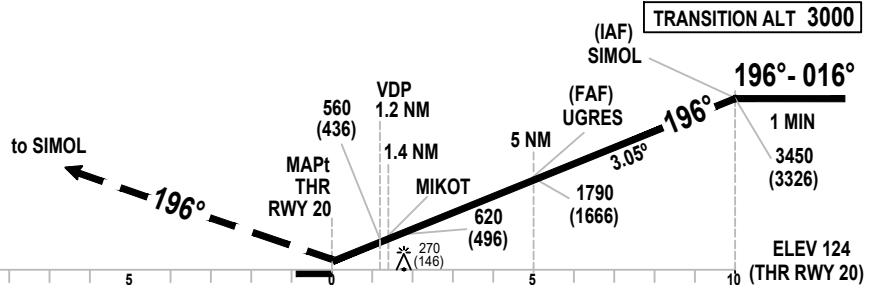
AFIS 118.2

PAYSANDU/Intl
Tydeo Larre Borges
RNAV (GNSS)
RWY 20



MISSED
APPROACH

Climb heading 196°
up to 2000 FT,
left turn stright to
SIMOL and wait for
AFIS directives.



OCA/H		A	B	C	D																			
Straight-in Approach	GPS	560(436)																						
	VIS	1200 M - 1500 M ALS INOP																						
	VDP	1.2 NM 560 FT																						
Circling						650 (473)	750 (573)	1000 (823)																
VIS						1900 m	2800 m	3700 m		4600 m		KT				80	100	120	140	160	180	200		
						SIMOL - RWY 20 (10 NM)				Min:Sec				7:30	6	5	4:28	3:45	3:20	3				
						Rate of descent 3.05°				Feet/Min				400	500	600	700	800	900	1000				
						NM RWY 20		1.2	1.4	3	4	5	6	7	8	9	10							
						Altitude		560	620	1138	1462	1790	2117	2447	2778	3040	3450							
						Height		436	496	1014	1338	1666	1993	2323	2654	2916	3326							

**INTENTIONALLY
LEFT BLANK**