

AD 2. AERODROMES**SUSO AD 2.14-1 AERODROME LOCATION INDICATOR AND NAME**

SUSO - SALTO / Intl Nueva Hespérides

SUSO 2.14-2 AERODROME GEOGRAPHICAL AND ADMINISTRATIVE DATA

1	<i>ARP coordinates and site at AD</i>	312605S 0575903W Location: 440 M SW from THR 23
2	<i>Direction and distance from (city)</i>	7 KM SW from the city
3	<i>Elevation/Reference temperature</i>	43 M (141 FT) / 32°C
4	<i>Geoid undulation at AD ELEV PSN</i>	16 M
5	<i>MAG VAR/Annual change</i>	11° W (JAN 2020) / 0.17° increasing
6	<i>AD operator, address, telephone, telefax, e-mail address, AFS address, website address</i>	Puerta del Sur S.A. Aeropuerto Internacional de Salto "Nueva Hespérides" - Salto Tel: 4732 7119 - Mobile (+598) 92344298 (Puerta del Sur) Telefax: 4732 7119 e-mail: suso@dinacia.gub.uy AFS: SUSOYTYX
7	<i>Types of traffic permitted (IFR/VFR)</i>	IFR/VFR
8	<i>Remarks</i>	Nil

SUSO AD 2.14-3 HORAS DE FUNCIONAMIENTO

1	<i>AD Operator</i>	H24
2	<i>Customs and immigration</i>	O/R
3	<i>Health and sanitation</i>	In the city (air ambulance in the Centro de Aviación Salto and two private planes to make putting ambulance stretchers and equipment)
4	<i>AIS Briefing Office</i>	Nil
5	<i>ATS Reporting Office (ARO)</i>	MON – SUN from 10:00 to 22:00 UTC
6	<i>MET Briefing Office</i>	☛ MON – SUN from 10:00 to 22:00 UTC (Tel.: 4733 4888; 4732 2310)
7	<i>ATS</i>	MON – SUN from 10:00 to 22:00 UTC
8	<i>Fuelling</i>	As AD Operator
9	<i>Handling</i>	As AD Operator
10	<i>Security</i>	As AD Operator

11	<i>De-icing</i>	Nil
12	<i>Remarks</i>	Nil

SUSO AD 2.14-4 HANDLING SERVICES AND FACILITIES

1	<i>Cargo-handling facilities</i>	Nil
2	<i>Fuel/oil types</i>	☛AVGAS 100, JET A1 / Oil: Nil
3	<i>Fuelling facilities/capacity</i>	☛AVGAS 100: 1 Tank of 25.000 L ☛JET A1: 1 Tank of 30.000 L
4	<i>De-icing facilities</i>	Nil
5	<i>Hangar space for visiting aircraft</i>	Nil
6	<i>Repair facilities for visiting aircraft</i>	Nil
7	<i>Remarks</i>	☛GPU equipment 115 V; GPU equipment 28 V

SUSO AD 2.14-5 PASSENGER FACILITIES

1	<i>Hotels</i>	In the city
2	<i>Restaurants</i>	In the city
3	<i>Transportation</i>	Taxis and limos in the city
4	<i>Medical facilities</i>	In the city (air ambulance in the Centro de Aviación Salto)
5	<i>Bank and Post Office</i>	Nil
6	<i>Tourist Office</i>	Nil
7	<i>Remarks</i>	Nil

SUSO AD 2.14-6 RESCUE AND FIRE FIGHTING SERVICES

1	<i>AD category for fire fighting</i>	☛CAT 5. A Rosembauer Panter model vehicle, 4 x 4, 6000 L of water, 750 L of level C foam and 250 kg of purple K PK92 chemical powder
2	<i>Rescue equipment</i>	☛Approach tools and equipment
3	<i>Capability for removal of disabled aircraft</i>	☛To be coordinated with the procedures of the aerodrome operator Puerta del Sur S.A.
4	<i>Remarks</i>	In case of major accident, FAU aircraft support immediate response, FAU rescue personnel, firefighters and doctors specializing in severe polytrauma.

SUSO AD 2.14-7 SEASONAL AVAILABILITY - CLEARING

1	<i>Types of clearing equipment</i>	Nil
---	------------------------------------	-----

SUSO AD 2.14-8 APRONS, TAXIWAYS AND CHECK LOCATIONS/POSITIONS DATA

1	<i>Apron surface and strength</i>	Surface: asphaltic concrete ☛Strength: 13/R/C/X/T
2	<i>Taxiway width, surface and strength</i>	Width: 19 M Surface: asphaltic concrete ☛Strength: 13/R/C/X/T
3	<i>Altimeter checkpoint location and elevation</i>	Terminal building apron (312614S/0575851W) 37 M
4	<i>VOR checkpoints</i>	Nil
5	<i>VOR/INS checkpoints</i>	Nil
6	<i>Remarks</i>	Nil

SUSO AD 2.14-9 SURFACE MOVEMENT GUIDANCE AND CONTROL SYSTEM AND MARKINGS

1	<i>Use of aircraft stand ID signs, TWY guide lines and visual docking/parking guidance system of aircraft stands</i>	Nil
2	<i>RWY and TWY markings and LGT</i>	☛RWY: Designation, centre line, THR and aiming point TWY: centre line
3	<i>Stop bars</i>	On TWY with RWY
4	<i>Remarks</i>	Nil

SUSO AD 2.14-10 AERODROME OBSTACLES

<i>In Area 2</i>					
<i>OBST ID/ Designation</i>	<i>OBST type</i>	<i>OBST position</i>	<i>ELEV/HGT</i>	<i>Markings/ Type, colour</i>	<i>Remarks</i>
a	b	c	d	e	f
No data					

<i>In Area 3</i>					
<i>OBST ID/ Designation</i>	<i>OBST type</i>	<i>OBST position</i>	<i>ELEV/HGT</i>	<i>Markings/ Type, colour</i>	<i>Remarks</i>
a	b	c	d	e	f
No data					

SUSO AD 2.14-11 METEOROLOGICAL INFORMATION PROVIDED

1	<i>Associated MET Office</i>	SALTO
2	<i>Hours of service MET Office outside hours</i>	☛ 10:00 a 22:00 UTC
3	<i>Office responsible for TAF preparation Periods of validity</i>	Surveillance MET Office CARRASCO (O/R)
4	<i>Trend forecast Interval of issuance</i>	Nil
5	<i>Briefing/consultation provided</i>	O/R
6	<i>Flight documentation Language(s) used</i>	Nil
7	<i>Charts and other information available for briefing or consultation</i>	Nil
8	<i>Supplementary equipment available for providing information</i>	Nil
9	<i>ATS units provided with information</i>	SALTO TWR
10	<i>Additional information (limitation of service, etc.)</i>	TWR anemometer and barometer U/S

SUSO AD 2.14-12 RUNWAY PHYSICAL CHARACTERISTICS

Designations RWY NR	TRUE BRG	Dimensions of RWY (M)	Strength (PCN) and surface of RWY and SWY	THR coordinates.		THR elevation and highest elevation of TDZ of precision APP RWY
				RWY end coordinates. THR geoid undulation		
1	2	3	4	5		6
05	038.88°	1 588 x 45	☛13/R/C/X/T Asphaltic concrete	312638.58S 0575925.92W 312638.58S 0575925.92W GUND 16.6 M		THR 43 M/ 141 FT
23	218.88°	1 588 x 45	☛13/R/C/X/T Asphaltic concrete	312558.47S 0575848.20W 312558.47S 0575848.20W GUND 16.5 M		THR 39 M/ 128 FT
13	116.23°	750 x 50	Grass	312550.79S 0575920.90W 312550.79S 0575920.90W GUND 16.5 M		THR 35 M/ 115 FT
31	296.22°	750 x 50	Grass	312601.54S 0575855.45W 312601.54S 0575855.45W GUND 16.5 M		THR 40 M/ 131 FT
Slope of RWY-SWY	SWY dimensions (M)	CWY dimensions (M)	Strip dimensions (M)	OFZ	RESA (M)	Remarks
7	8	9	10	11	12	13
☛0.5%/-0.9%/1%/-0.1% ☛(244 M) (438 M) ☛(761 M) (145 M)	Nil	Nil	1 708 x 280	Nil	☛90 x 90	Nil
☛0.1%/-1%/0.9%/-0.5% ☛(145 M) (761 M) ☛(438 M) (244 M)	Nil	Nil	1 708 x 280	Nil	☛90 x 90	Nil

SUSO AD 2.14-13 DECLARED DISTANCES

<i>RWY Designator</i>	<i>TORA (M)</i>	<i>TODA (M)</i>	<i>ASDA (M)</i>	<i>LDA (M)</i>	<i>Remarks</i>
1	2	3	4	5	6
05	1 588	1 588	1 588	1 588	Nil
23	1 588	1 588	1 588	1 588	Nil
13	750	750	750	750	Nil
31	750	750	750	750	Nil

SUSO AD 2.14-14 APPROACH AND RUNWAY LIGHTING

<i>RWY Designator</i>	<i>APCH LGT type LEN INTST</i>	<i>THR LGT colour WBAR</i>	<i>VASIS (MEHT) PAPI</i>	<i>TDZ, LGT LEN</i>	<i>RWY Centre Line LGT Length, spacing, colour, INTST</i>	<i>RWY edge LGT LEN, spacing colour INTST</i>	<i>RWY End LGT colour WBAR</i>	<i>SWY LGT LEN (M) colour</i>	<i>Remarks</i>
1	2	3	4	5	6	7	8	9	10
05	SALS 420 M LIM	Green ☛	PAPI	Nil	Nil	☛1588 M, 60 M White ☛Amber	☛Red ☛	Nil	Nil
23	☛SALS ☛210 M ☛LIM	Green ☛	PAPI	Nil	Nil	☛1588 M, 60 M White ☛Amber	☛Red ☛	Nil	Nil
13	Nil	Nil	Nil	Nil	Nil	Nil	Nil	Nil	Nil
31	Nil	Nil	Nil	Nil	Nil	Nil	Nil	Nil	Nil

SUSO AD 2.14-15 OTHER LIGHTING, SECONDARY POWER SUPPLY

1	<i>ABN/IBN location, characteristics and hours of operation</i>	ABN: Terminal building / IBN: Nil
2	<i>LDI location and LGT Anemometer location and LGT</i>	☛WDI: 150 M SE from THR 05, lighted Anemometer: 50 M W from TWR
3	<i>TWY edge and centre line lighting</i>	Edge: blue lights Centre: Nil
4	<i>Secondary power supply/switch-over time</i>	☛Secondary power supply: 110 KW (automatic manual) for the entire aerodrome.
5	<i>Remarks</i>	Nil

SUSO AD 2.14-16 HELICOPTER LANDING AREA

1	<i>Coordinates TLOF or THR of FATO Geoid undulation</i>	Nil
2	<i>TLOF and/or FATO elevation M/FT</i>	Nil
3	<i>TLOF and FATO area dimensions, surface, strength, marking</i>	Nil
4	<i>True BRG FATO</i>	Nil
5	<i>Declared distance available</i>	Nil
6	<i>APP and FATO lighting</i>	Nil
7	<i>Remarks</i>	Nil

SUSO AD 2.14-17 ATS AIRSPACE

1	<i>Designation and lateral limits</i>	SALTO CTR Arc, radius 10 NM (18 KM) centred at 312605S 0575903W up to the FIR limit SALTO ATZ Circle, radius 4 NM (7.4 KM) centred at 312605S 0575903W up to the FIR limit
2	<i>Vertical limits</i>	CTR: GND up to FL 055 ATZ: GND up to 450 M
3	<i>Airspace classification</i>	From MON to SUN from 10:00 to 22:00 UTC: "C"; others: "G"
4	<i>ATS unit call sign Language(s)</i>	Salto Tower Spanish, English (O/R)
5	<i>Transition altitude</i>	900 M
6	<i>Remarks</i>	Nil

SUSO AD 2.14-18 ATS COMMUNICATION FACILITIES

<i>Service designation</i>	<i>Call sign</i>	<i>Frequency</i>	<i>Hours of operation</i>	<i>Remarks</i>
1	2	3	4	5
TWR	Salto Tower	118.8 MHZ 122.1 MHZ*	As AD	* Secondary FREQ

SUSO AD 2.14-19 RADIO NAVIGATION AND LANDING AIDS

<i>Type of aid, MAG VAR, Type of supported OP (for VOR/ILS/MLS, give declination)</i>	<i>ID</i>	<i>Frequency</i>	<i>Hours of operation</i>	<i>Position of transmitting antenna coordinates</i>	<i>Elevation of DME transmitting antenna</i>	<i>Remarks</i>
1	2	3	4	5	6	7
Nil						

SUSO AD 2.14-20 LOCAL TRAFFIC REGULATIONS

☛ Nil

SUSO AD 2.14-21 NOISE ABATEMENT PROCEDURES

☛ Nil

SUSO AD 2.14-22 FLIGHT PROCEDURES

☛ Nil

SUSO AD 2.14-23 ADDITIONAL INFORMATION

☛ Nil

SUSO AD 2.14-24 CHARTS RELATED TO AN AERODROME

Aerodrome/Heliport Chart – ICAO.....	➡ AD 2.14-15
➡ Aerodrome Obstacle Chart – ICAO Type A – RWY 05/23	AD 2.14-17
Instrument Approach Chart - ICAO RNAV (GNSS) RWY 05	➡ AD 2.14-19

**INTENTIONALLY
LEFT BLANK**

AERODROME/HELIPORT
CHART - ICAO

31°26'05"S
057°59'03"W
ELEV 043
(141)

TWR 118.8 - 122.1
APRON 118.8 - 122.1

SALTO/Intl
Nueva Hespérides

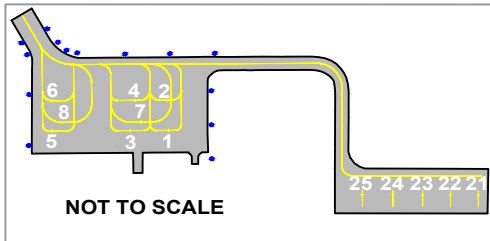
RWY	DIRECTION	THR	GUND	BEARING STRENGTH
05	050°	31°26'38.58"S 57°59'25.92"W	16.6 M	Runway, Taxiways and Apron PCN 13/R/C/X/T
23	230°	31°25'58.47"S 57°58'48.20"W	16.5 M	
13	128°	31°25'50.79"S 57°59'20.90"W	16.5 M	No data
31	308°	31°26'01.54"S 57°58'55.45"W	16.5 M	

VAR 1° W - 2020
ANNUAL RATE
OF CHANGE 10 W

ELEVATIONS IN METRES (AND FEET)
DIMENSIONS IN METRES
BEARINGS ARE MAGNETIC

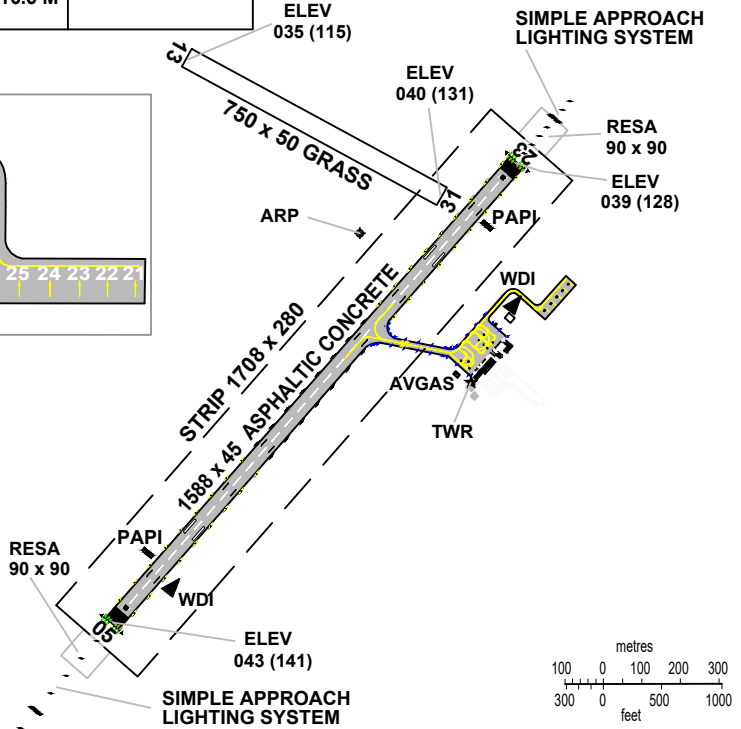
TAXIWAYS 19 WIDE

APRON



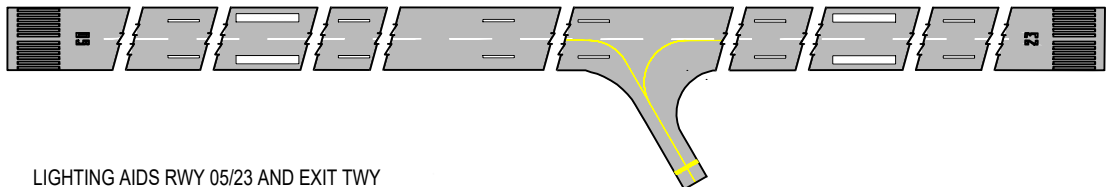
INS COORDINATES FOR
AIRCRAFT STANDS

- 1 31°26'13.50"S 057°58'49.79"W
- 2 31°26'13.05"S 057°58'50.52"W
- 3 31°26'14.26"S 057°58'50.51"W
- 4 31°26'13.68"S 057°58'51.12"W
- 5 31°26'15.81"S 057°58'51.97"W
- 6 31°26'15.32"S 057°58'52.67"W
- 7 31°26'13.91"S 057°58'50.50"W
- 8 31°26'15.48"S 057°58'51.99"W
- 21 31°26'08.45"S 057°58'42.47"W
- 22 31°26'09.00"S 057°58'43.00"W
- 23 31°26'09.54"S 057°58'43.52"W
- 24 31°26'10.13"S 057°58'44.08"W
- 25 31°26'10.73"S 057°58'44.66"W

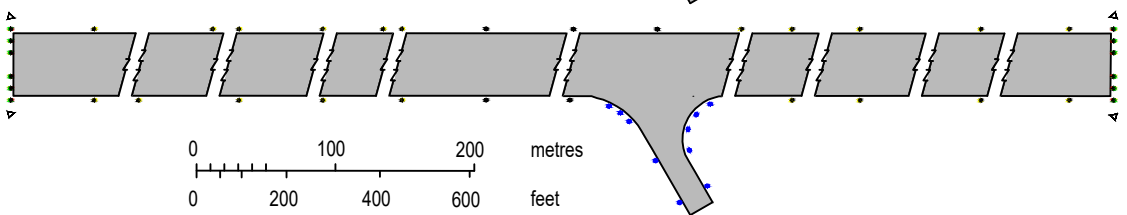


Change: Strength, SALS RWY 23, RESA, PRKG.

MARKING AIDS RWY 05/23 AND EXIT TWY



LIGHTING AIDS RWY 05/23 AND EXIT TWY



**INTENTIONALLY
LEFT BLANK**

AERODROME OBSTACLE CHART - ICAO

TYPE A (OPERATING LIMITATIONS)

DIMENSIONS AND ELEVATIONS IN METRES

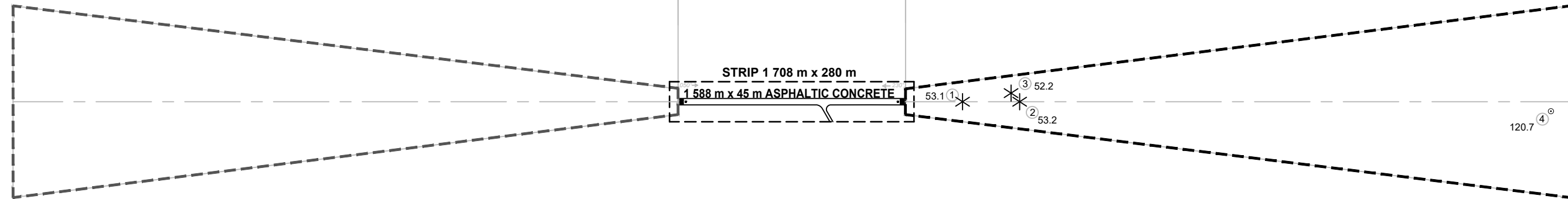
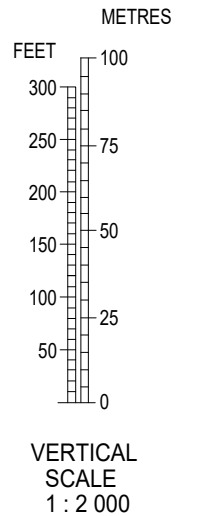
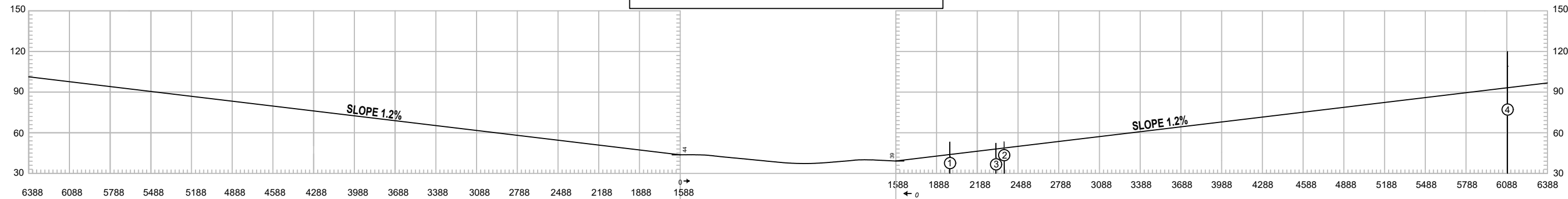
SALTO / Intl Nueva Hespérides

MAGNETIC VARIATION 11° W JAN 2020

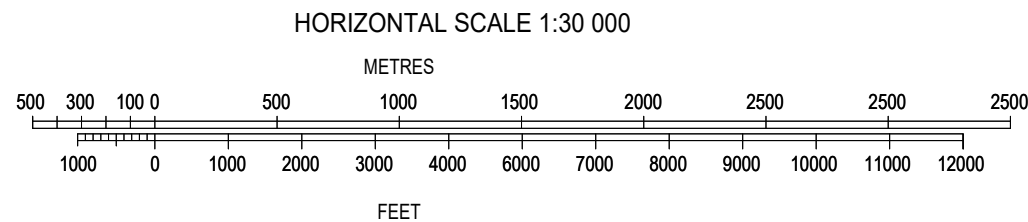
RWY 05 / 23

DECLARED DISTANCES

RWY 05		RWY 23	
1588	TAKE-OFF RUN AVAILABLE	1588	
1588	TAKE-OFF DISTANCE AVAILABLE	1588	
1588	ACCELERATE STOP DISTANCE AVAILABLE	1588	
1588	LANDING DISTANCE AVAILABLE	1588	



LEGEND	
IDENTIFICATION NUMBER	①
TREE OR SHRUB	*
HIGHWAY	====
POLE, TOWER, SPIRE, ANTENNA, ETC.	⊙
BUILDING OR LARGE STRUCTURE	■
RAILROAD	—+—+—+—
TERRAIN CONTOUR	~
TERRAIN PENETRATING OBSTACLE PLANE	▲



ORDER OF ACCURACY
HORIZONTAL 01 M
VERTICAL 01 M

Change:
New chart

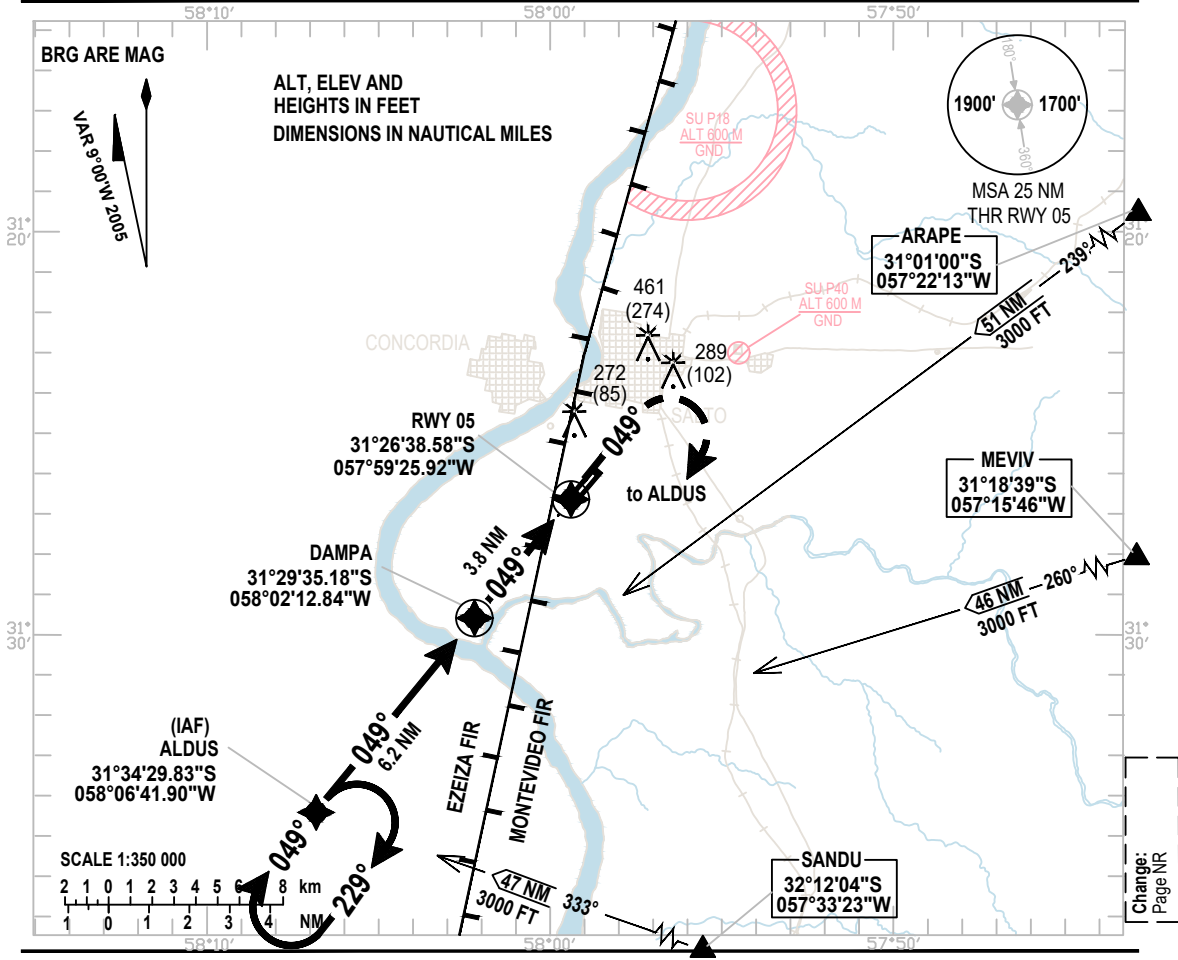
**INTENTIONALLY
LEFT BLANK**

INSTRUMENT
APPROACH
CHART - ICAO

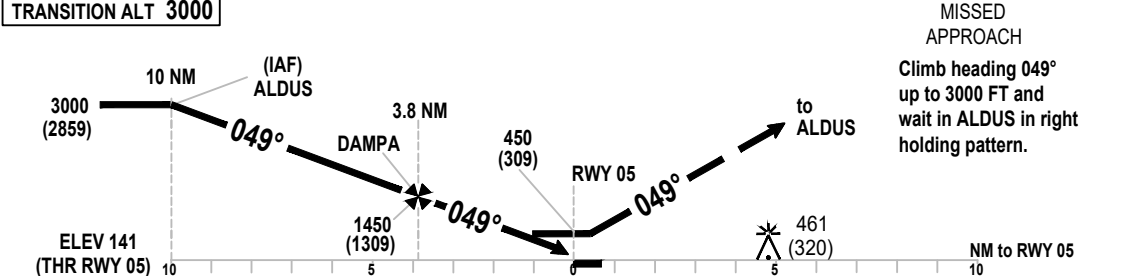
AERODROME ELEV **141 FT**
HEIGHTS RELATED TO
AL THR RWY 05 - ELEV 141 FT

TWR 118.8 - 122.1

SALTO/Intl
Nueva Hespérides
RNAV (GNSS)
RWY 05



TRANSITION ALT 3000



OCA/H		A	B	C	D								
Straight-in Approach	GPS	450(309)											
	VIS	1200 M	1600 M	SALS INOP									
Circling	VIS	570 (429)	980 (839)	1100 (959)									
		1600 m		3500 m		4500 m							
DAMPA - RWY 05 (3.8 NM)						KT	80	100	120	140	160	180	200
Rate of descent 5,2%						Min:Sec	3:45	3:00	2:30	2:08	1:48	1:36	1:30
						Feet/Min	400	500	600	700	800	900	1000
NM RWY 05						0.7	2	3	3.8				
ALTITUDE						450	880	1200	1450				
HEIGHT						309	739	1059	1309				

**INTENTIONALLY
LEFT BLANK**