

AD 2. AERODROMES**SUAG AD 2.1-1 AERODROME LOCATION INDICATOR AND NAME**

SUAG - ARTIGAS/International

SUAG 2.1-2 AERODROME GEOGRAPHICAL AND ADMINISTRATIVE DATA

1	<i>ARP coordinates and site at AD</i>	302357S 0563039W Terminal building apron
2	<i>Direction and distance from (city)</i>	4 KM W from the city (S of Cuareim river)
3	<i>Elevation/Reference temperature</i>	125 M (410 FT) / 33°C
4	<i>Geoid undulation at AD ELEV PSN</i>	14 M
5	<i>MAG VAR/Annual change</i>	13° W(JAN 2020) / 0.17° increasing
6	<i>AD operator, address, telephone, telefax, e-mail address, AFS address, website address</i>	Dirección Nacional de Aviación Civil e Infraestructura Aeronáutica Aeropuerto Intl de Artigas Tel: 4772 3971 Telefax: 4772 3971 e-mail: suag@dinacia.gub.uy AFS: SUAGYTYX
7	<i>Types of traffic permitted (IFR/VFR)</i>	VFR
8	<i>Remarks</i>	Nil

SUAG AD 2.1-3 OPERATIONAL HOURS

1	<i>AD Operator</i>	MON - FRI 11:00 to 19:00 UTC; SAT, SUN, HOL and others: O/R only for humanitarian, SAN or EMERG flights.
2	<i>Customs and immigration</i>	As AD Operator
3	<i>Health and sanitation</i>	Only in the city
4	<i>AIS Briefing Office</i>	Nil
5	<i>ATS Reporting Office (ARO)</i>	As AD Operator
6	<i>MET Briefing Office</i>	☛ MON – SUN from 10:00 to 22:00 UTC
7	<i>ATS</i>	MON – SUN from 10:00 to 22:00 UTC
8	<i>Fuelling</i>	As AD Operator
9	<i>Handling</i>	As AD Operator
10	<i>Security</i>	As AD Operator
11	<i>De-icing</i>	Nil
12	<i>Remarks</i>	Nil

SUAG AD 2.1-4 HANDLING SERVICES AND FACILITIES

1	<i>Cargo-handling facilities</i>	Nil
2	<i>Fuel/oil types</i>	Fuel: JP1, AVGAS 100/130; oil: Nil
3	<i>Fuelling facilities/capacity</i>	JP1: 10.000 litres; AVGAS 100/130: 10.000 litres.
4	<i>De-icing facilities</i>	Nil
5	<i>Hangar space for visiting aircraft</i>	Nil
6	<i>Repair facilities for visiting aircraft</i>	Nil
7	<i>Remarks</i>	Nil

SUAG AD 2.1-5 PASSENGER FACILITIES

1	<i>Hotels</i>	In the city
2	<i>Restaurants</i>	In the city
3	<i>Transportation</i>	Taxis
4	<i>Medical facilities</i>	In the city
5	<i>Bank and Post Office</i>	In the city
6	<i>Tourist Office</i>	In the city
7	<i>Remarks</i>	Nil

SUAG AD 2.1-6 RESCUE AND FIRE FIGHTING SERVICES

1	<i>AD category for fire fighting</i>	Nil
2	<i>Rescue equipment</i>	Nil
3	<i>Capability for removal of disabled aircraft</i>	Nil
4	<i>Remarks</i>	FAU aircraft support immediate response, FAU rescue personnel, firefighters and doctors specializing in severe polytrauma.

SUAG AD 2.1-7 SEASONAL AVAILABILITY – CLEARING

1	<i>Types of clearing equipment</i>	Nil
---	------------------------------------	-----

SUAG AD 2.1-8 APRONS, TAXIWAYS AND CHECK LOCATIONS/POSITIONS DATA

1	<i>Apron surface and strength</i>	Surface: concrete Strength: no data AVBL
2	<i>Taxiway width, surface and strength</i>	Width: 19 M Surface: bituminous treatment Strength: no data AVBL
3	<i>Altimeter checkpoint location and elevation</i>	Apron centre (302357S/0563039W) 122 M
4	<i>VOR/INS checkpoints</i>	Nil
5	<i>Remarks</i>	Nil

SUAG AD 2.1-9 SURFACE MOVEMENT GUIDANCE AND CONTROL SYSTEM AND MARKINGS

1	<i>Use of aircraft stand ID signs, TWY guide lines and visual docking/parking guidance system of aircraft stands</i>	Nil
2	<i>RWY and TWY markings and LGT</i>	<ul style="list-style-type: none"> ☛ RWY 11/29 : Marking: centre and THR. ☛ LGT: THR, RWY edge and RWY end lights ☛ TWY: Marking: Nil. LGT: edge lights
3	<i>Stop bars</i>	BTN TWY and RWY
4	<i>Remarks</i>	Nil

SUAG AD 2.1-10 AERODROME OBSTACLES

<i>In approach/TKOF areas</i>			<i>In circling area and at AD</i>		<i>Remarks</i>	
1			2			3
<i>RWY/Area affected</i>	<i>Obstacle type</i>	<i>Elevation</i>	<i>Obstacle type</i>	<i>Elevation</i>	<i>Coordinates</i>	Nil
	<i>Markings/LGT</i>	<i>Coordinates</i>	<i>Markings/LGT</i>	<i>Coordinates</i>		
a	b	c	a	b		
29/APCH 11/TKOF	Antenna 180 M / 590 FT LGTD	302415S 0562805W(*)	Antenna 185 M / 610 FT LGTD	302350S 0562750W(*)		

<i>In approach/TKOF areas</i>			<i>In circling area and at AD</i>		<i>Remarks</i>
1			2		3
<i>RWY/Area affected</i>	<i>Obstacle type Elevation Markings/LGT</i>	<i>Coordinates</i>	<i>Obstacle type Elevation Markings/LGT</i>	<i>Coordinates</i>	Nil
a	b	c	a	b	
29/APCH 11/TKOF	Water tank with Antenna 170 M / 560 FT LGTD	302425S 0562825W(*)	Antenna 172 M / 565 FT LGTD	302440S 0562855W(*)	
29/APCH 11/TKOF	Antenna 175 M / 575 FT LGTD	302450S 0562902W(*)	Antenna 185 M / 610 FT Nil	302456S 0562920W(*)	
29/APCH 11/TKOF	Antenna 188 M / 620 FT LGTD	302503S 0562902W(*)			

SUAG AD 2.1-11 METEOROLOGICAL INFORMATION PROVIDED

1	<i>Associated MET Office</i>	ARTIGAS
2	<i>Hours of service MET Office outside hours</i>	H 24
3	<i>Office responsible for TAF preparation Periods of validity</i>	Surveillance MET Office Carrasco 24 H
4	<i>Trend forecast Interval of issuance</i>	Nil
5	<i>Briefing/consultation provided</i>	O/R
6	<i>Flight documentation Language(s) used</i>	Nil
7	<i>Charts and other information available for briefing or consultation</i>	O/R
8	<i>Supplementary equipment available for providing information</i>	Nil
9	<i>ATS units provided with information</i>	ARTIGAS TWR
10	<i>Additional information (limitation of service, etc.)</i>	☛ Nil

SUAG AD 2.1-12 RUNWAY PHYSICAL CHARACTERISTICS

Designations RWY NR	TRUE BRG	Dimensions of RWY (M)	Strength (PCN) and surface of RWY and SWY	THR coordinates. RWY end coordinates. THR geoid undulation	THR elevation and highest elevation of TDZ of precision APP RWY
				5	6
11	☛097.02°	1 275 x 30	5700 Kg Bituminous treatment	302400.01S 0563052.03W 302400.01S 0563052.03W GUND 14.0 M	THR 121 M/397 FT
29	☛277.02°	1 275 x 30	5700 Kg Bituminous treatment	302405.07S 0563004.62W 302405.07S 0563004.62W GUND 14.0 M	THR 119 M/390 FT
05	☛036.33°	600 x 50	Grass	302420.69S 0563032.19W 302420.69S 0563032.19W GUND 14.0 M	THR 121 M/397 FT
23	☛216.32°	600 x 50	Grass	302405.47S 0563019.28W 302405.47S 0563019.28W GUND 14.0 M	THR 125 M/410 FT
Slope of RWY-SWY	SWY dimensions (M)	CWY dimensions (M)	Strip dimensions (M)	OFZ	Remarks
7	8	9	10	11	12
+2.5%/+0.3%/-0.8%/0% (40 M) (635 M) (500 M) (100 M)	Nil	Nil	☛1 395 x 140	Nil	Nil
0%/+0.8%/-0.3%/-2.5% (100 M) (500 M) (635 M) (40 M)	Nil	Nil	☛1 395 x 140	Nil	Nil
No data					
No data					

SUAG AD 2.1-13 DECLARED DISTANCES

<i>RWY Designator</i>	<i>TORA (M)</i>	<i>TODA (M)</i>	<i>ASDA (M)</i>	<i>LDA (M)</i>	<i>Remarks</i>
1	2	3	4	5	6
11	1 275	1 275	1 275	1 275	Nil
29	1 275	1 275	1 275	1 275	Nil
05	600	600	600	600	Nil
23	600	600	600	600	Nil

SUAG AD 2.1-14 APPROACH AND RUNWAY LIGHTING

<i>RWY Designator</i>	<i>APCH LGT type LEN INTST</i>	<i>THR LGT colour WBAR</i>	<i>VASIS (MEHT) PAPI</i>	<i>TDZ, LGT LEN</i>	<i>RWY Centre Line LGT Length, spacing, colour, INTST</i>	<i>RWY edge LGT LEN, spacing colour INTST</i>	<i>RWY End LGT colour WBAR</i>	<i>SWY LGT LEN (M) colour</i>	<i>Remarks</i>
					6	7			
1	2	3	4	5	6	7	8	9	10
11	Nil	☛Green ☛Red	☛PAPI	Nil	Nil	☛1275 M ☛60 M ☛White	- ☛White	Nil	Nil
29	Nil	☛Green ☛Red	Nil	Nil	Nil	☛1275 M ☛60 M ☛White	- ☛White	Nil	Nil
05	Nil	Nil	Nil	Nil	Nil	Nil	-	Nil	Nil
23	Nil	Nil	Nil	Nil	Nil	Nil	-	Nil	Nil

SUAG AD 2.1-15 OTHER LIGHTING, SECONDARY POWER SUPPLY

1	<i>ABN/IBN location, characteristics and hours of operation</i>	ABN: TWR building / IBN: Nil H24
2	<i>LDI location and LGT Anemometer location and LGT</i>	LDI: Nil Anemometer: 200 M of runway centre line
3	<i>TWY edge and centre line lighting</i>	☛Edge: blue lights Centre: Nil
4	<i>Secondary power supply/switch-over time</i>	Secondary power supply 20 KW – manual operation (all the Aerodrome)
5	<i>Remarks</i>	Nil

SUAG AD 2.1-16 HELICOPTER LANDING AREA

1	<i>Coordinates TLOF or THR of FATO</i>	Nil
2	<i>TLOF and/or FATO elevation M/FT</i>	Nil
3	<i>TLOF and FATO area dimensions, surface, strength, marking</i>	Nil
4	<i>True and MAG BRG FATO</i>	Nil
5	<i>Declared distance available</i>	Nil
6	<i>APP and FATO lighting</i>	Nil
7	<i>Remarks</i>	Nil

SUAG AD 2.1-17 ATS AIRSPACE

1	<i>Designation and lateral limits</i>	ARTIGAS CTR CTR arc, radius 10 NM centered at 302357S/0563039W (ARP) up to FIR limit. ARTIGAS ATZ ATZ circle, radius 4 NM centered at 302357S/0563039W (ARP)
2	<i>Vertical limits</i>	CTR: GND up to FL 055 ATZ: GND up to 450 M
3	<i>Airspace classification</i>	☛ From MON to SUN from 10:00 to 22:00 UTC: "C"; others: "G"
4	<i>ATS unit call sign Language(s)</i>	Artigas Tower Spanish
5	<i>Transition altitude</i>	900 M
6	<i>Remarks</i>	Nil

SUAG AD 2.1-18 ATS COMMUNICATION FACILITIES

<i>Service designation</i>	<i>Call sign</i>	<i>Frequency</i>	<i>Hours of operation</i>	<i>Remarks</i>
1	2	3	4	5
TWR	Artigas Tower	122.1 MHZ	As AD	Nil
AMS	Nil			
AFS	CX02		As AD	Nil

SUAG AD 2.1-19 RADIO NAVIGATION AND LANDING AIDS

<i>Type of aid, MAG VAR, Type of supported OP (for VOR/ILS/MLS, give declination)</i>	<i>ID</i>	<i>Frequency</i>	<i>Hours of operation</i>	<i>Position of transmitting antenna coordinates</i>	<i>Elevation of DME transmitting antenna</i>	<i>Remarks</i>
1	2	3	4	5	6	7

SUAG AD 2.1-22 FLIGHT PROCEDURES



Minimum vertical separation in the Traffic Circuit of Artigas.

Nil.

☛ **Use limitations**

☛ Aerodrome restricted to operations in diurnal visual meteorological conditions.

SUAG AD 2.1-24 CHARTS RELATED TO AN AERODROME

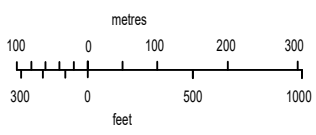
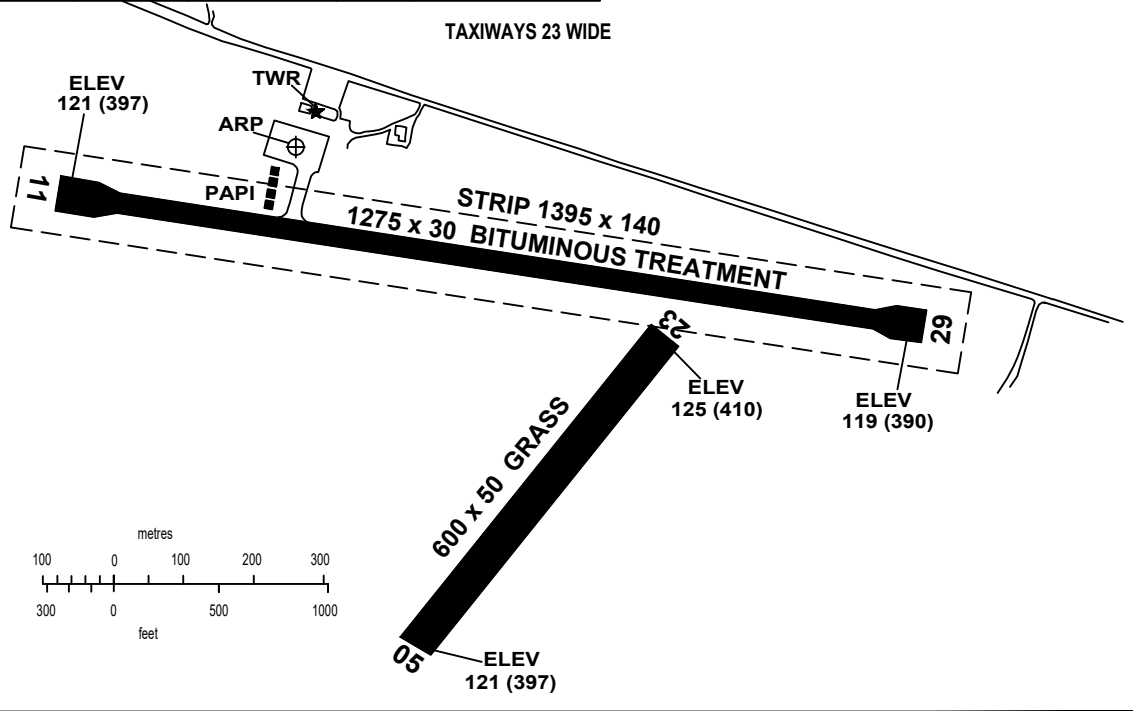
Aerodrome/Heliport Chart - ICAO.....	AD 2.1-11
☛ Instrument Approach Chart – ICAO RNAV (GNSS) RWY 11	AD 2.1-13
☛ Visual Approach Chart – ICAO	AD 2.1-15

AERODROME/HELIPORT CHART - ICAO	30°23'57"S 056°30'39"W	ELEV 125 (410)	TWR 122.1 APRON 122.1	ARTIGAS/Intl
------------------------------------	---	---------------------------------	--	---------------------

RWY	DIRECTION	THR	GUND	BEARING STRENGTH
11	110°	30°24'00.01"S 56°30'52.03"W	14.0 M	5700 KG
29	290°	30°24'05.07"S 56°30'04.62"W	14.0 M	
05	049°	30°24'20.69"S 56°30'32.19"W	14.0 M	No data
23	229°	30°24'05.47"S 56°30'19.28"W	14.0 M	

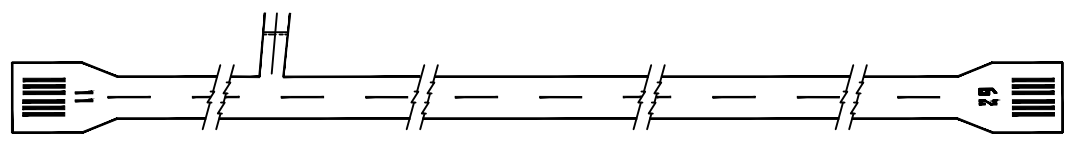


ELEVATIONS IN METRES (AND FEET)
DIMENSIONS IN METRES
BEARINGS ARE MAGNETIC

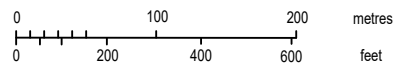
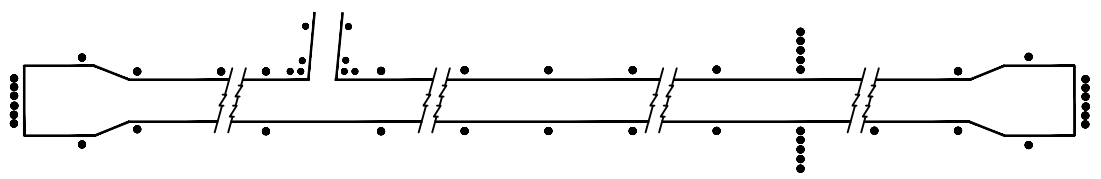


Change:
VAR : DIRECTION, RWY strip

MARKING AIDS RWY 11/29 AND EXIT TWY



LIGHTING AIDS RWY 11/29 AND EXIT TWY



**INTENTIONALLY
LEFT BLANK**

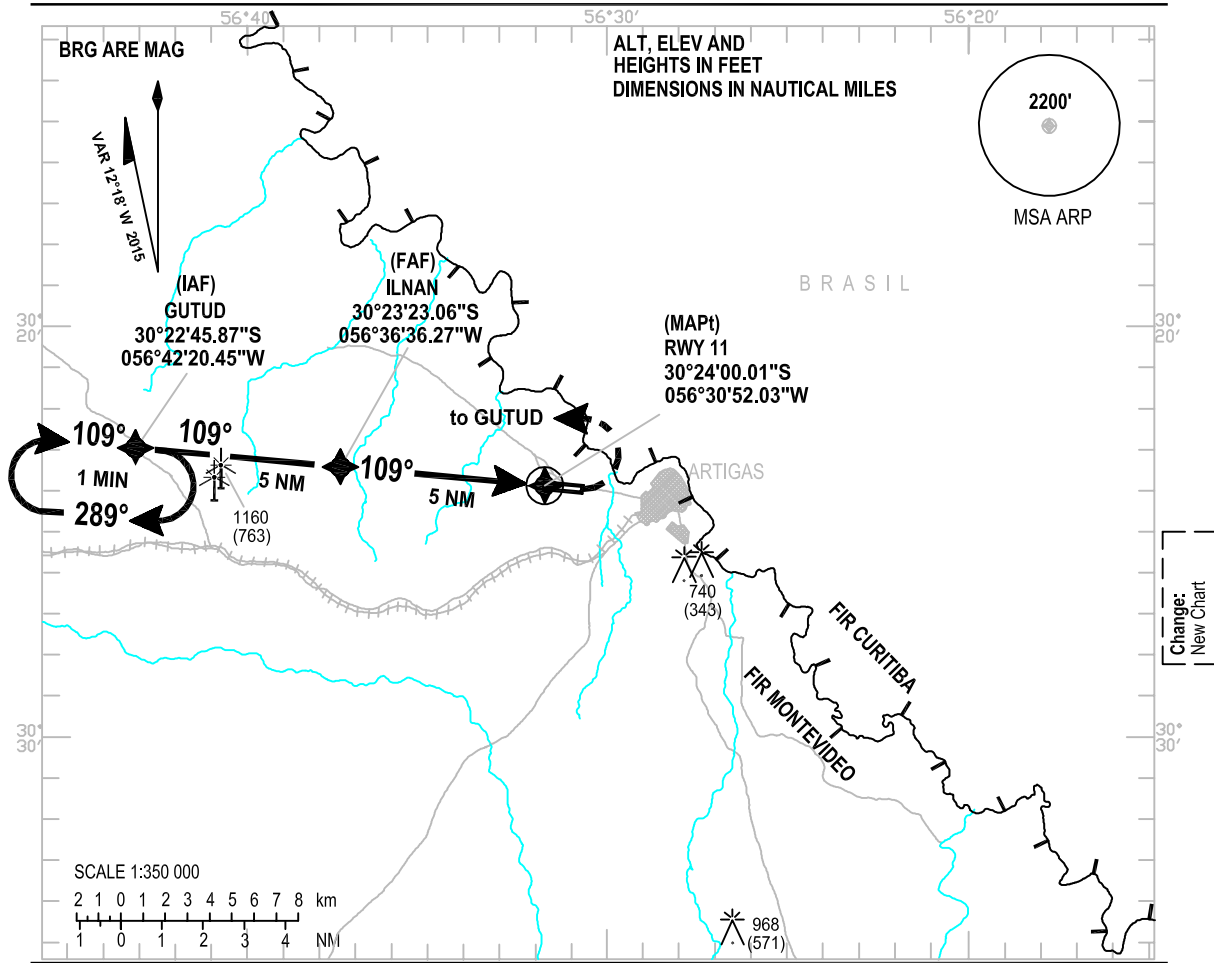
INSTRUMENT
APPROACH
CHART - ICAO

AERODROME ELEV **410 FT**
HEIGHTS RELATED TO
THR RWY 11 - ELEV 397 FT

TWR 122.1

ARTIGAS/Intl

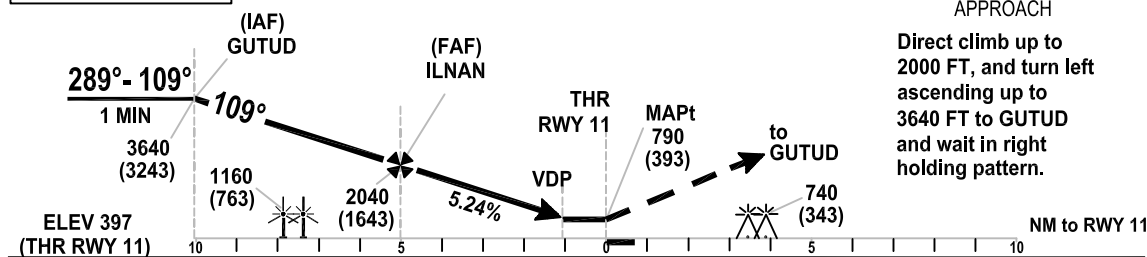
RNAV (GNSS)
RWY 11



TRANSITION ALT 3000

MISSED
APPROACH

Direct climb up to 2000 FT, and turn left ascending up to 3640 FT to GUTUD and wait in right holding pattern.



OCA/H		A	B	C	D
MDA		790 (393)			
VIS		1500 M - 2000 M ALS INOP			
VDP		1.1 NM			
Circling VIS		1100 (703)		3300 m	

ILNAN - RWY 11 (5 NM) Rate of descent 5,24%	KT	80	100	120	140	160	180	200
	Min:Sec	3:45	3:00	2:50	2:14	1:50	1:35	1:30
	Feet/Min	400	500	600	700	800	900	1000

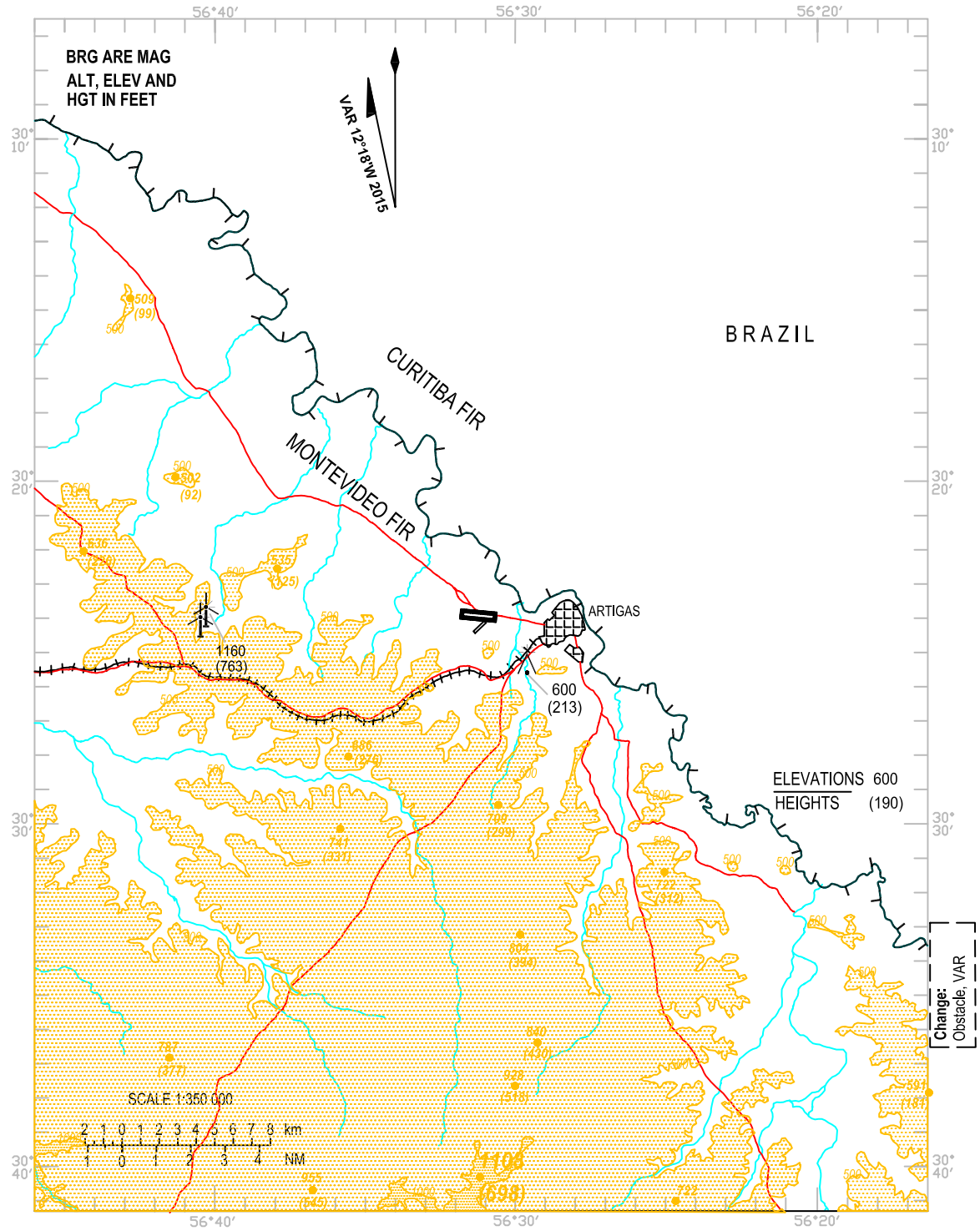
**INTENTIONALLY
LEFT BLANK**

VISUAL
APPROACH
CHART - ICAO

AERODROME ELEV **410 FT**
HEIGHTS RELATED TO
AD ELEV

ACC 128.5 - 126.3
TWR 122.1

ARTIGAS / Intl



**INTENTIONALLY
LEFT BLANK**