

AD 2. AERODROMES**SUPE AD 2.11-1 AERODROME LOCATION INDICATOR AND NAME**

SUPE - PUNTA DEL ESTE/Departamental "El Jagüel"

SUPE 2.11-2 AERODROME GEOGRAPHICAL AND ADMINISTRATIVE DATA

1	ARP coordinates and site at AD	345447S 0545509W 20 M E from TWR
2	Direction and distance from (city)	6 KM NE from the city of Punta del Este
3	Elevation/Reference temperature	20 M (66 FT) / 25°C
4	Geoid undulation at AD ELEV PSN	13 M
5	MAG VAR/Annual change	☛ 12° W (JAN 2020) / 0.14° increasing
6	AD operator, address, telephone, telefax, e-mail address, AFS address, website address	Dirección Nacional de Aviación Civil e Infraestructura Aeronáutica Aeropuerto Dptal. de Punta del Este "El Jagüel" Maldonado Tel: 4248 4513 Telefax: 4248 4513 e-mail: supe@dinacia.gub.uy AFS: SUPEYTYX
7	Types of traffic permitted (IFR/VFR)	☛ VFR (Special VFR flights not applied)
8	Remarks	Nil

SUPE AD 2.11-3 OPERATIONAL HOURS

1	AD Operator	DLY from 11:00 UTC to SS.
2	Customs and immigration	Nil
3	Health and sanitation	In the city of Punta del Este and Maldonado
4	AIS Briefing Office	Nil
5	ATS Reporting Office (ARO)	Nil
6	MET Briefing Office	Nil
7	ATS	Nil
8	Fuelling	As AD Operator
9	Handling	Nil
10	Security	Nil
11	De-icing	Nil
12	Remarks	Nil

SUPE AD 2.11-4 HANDLING SERVICES AND FACILITIES

1	<i>Cargo-handling facilities</i>	On behalf of transportation companies
2	<i>Fuel/oil types</i>	Fuel 100/130, JET A-1 / Oil: Nil
3	<i>Fuelling facilities/capacity</i>	100/130: 15 000 L JET A-1: 10 000 L
4	<i>De-icing facilities</i>	Nil
5	<i>Hangar space for visiting aircraft</i>	Nil
6	<i>Repair facilities for visiting aircraft</i>	Nil
7	<i>Remarks</i>	Limited refuelling of up to 5,700 Kg ACFT

SUPE AD 2.11-5 PASSENGER FACILITIES

1	<i>Hotels</i>	In the city of Punta del Este and Maldonado
2	<i>Restaurants</i>	Bar, restaurant and confectionery service during summer time.
3	<i>Transportation</i>	Bus and taxis service
4	<i>Medical facilities</i>	In the city of Punta del Este and Maldonado
5	<i>Bank and Post Office</i>	Nil
6	<i>Tourist Office</i>	Nil
7	<i>Remarks</i>	Nil

SUPE AD 2.11-6 RESCUE AND FIRE FIGHTING SERVICES

1	<i>AD category for fire fighting</i>	☛ Nil
2	<i>Rescue equipment</i>	Nil
3	<i>Capability for removal of disabled aircraft</i>	Nil
4	<i>Remarks</i>	Nil

SUPE AD 2.11-7 SEASONAL AVAILABILITY - CLEARING

1	<i>Types of clearing equipment</i>	Nil
---	------------------------------------	-----

SUPE AD 2.11-8 APRONS, TAXIWAYS AND CHECK LOCATIONS/POSITIONS DATA

1	<i>Apron surface and strength</i>	Surface: asphalt concrete Strength: No data
2	<i>Taxiway width, surface and strength</i>	Width: 23 M Surface: asphalt concrete Strength: No data
3	<i>Altimeter checkpoint location and elevation</i>	Terminal apron (345451S/0545506W) 15 M
4	<i>VOR/INS checkpoints</i>	Nil
5	<i>Remarks</i>	Nil

SUPE AD 2.11-9 SURFACE MOVEMENT GUIDANCE AND CONTROL SYSTEM AND MARKINGS

1	<i>Use of aircraft stand ID signs, TWY guide lines and visual docking/parking guidance system of aircraft stands</i>	Nil
2	<i>RWY and TWY markings and LGT</i>	RWY: Designation, centre line, THR of RWY and fix distances TWY: Designation of centre line, holding points
3	<i>Stop bars</i>	Stop bars on TWY
4	<i>Remarks</i>	Nil

SUPE AD 2.11-10 AERODROME OBSTACLES

<i>In approach/TKOF areas</i>			<i>In circling area and at AD</i>		<i>Remarks</i>
1			2	3	
<i>RWY/Area affected</i>	<i>Obstacle type Elevation Markings/LGT</i>	<i>Coordinates</i>	<i>Obstacle type Elevation Markings/LG</i>	<i>Coordinates</i>	Nil
a	b	c	a	b	
20/APCH	Tree 57 M 190° Antenna 32 M 167°		Grinder 40 M 188° Antenna 193 M (MSL) LGT	345139S 0545719W(*)	

SUPE AD 2.11-11 METEOROLOGICAL INFORMATION PROVIDED

1	<i>Associated MET Office</i>	MALDONADO LAGUNA
2	<i>Hours of service MET Office outside hours</i>	☛ As AD Operator -
3	<i>Office responsible for TAF preparation Periods of validity</i>	Surveillance MET Office CARRASCO H 24
4	<i>Trend forecast Interval of issuance</i>	O/R
5	<i>Briefing/consultation provided</i>	Personal inquiries: High season Low season O/R
6	<i>Flight documentation Language(s) used</i>	Chart, En-Route chart (provided in high season) Spanish
7	<i>Charts and other information available for briefing or consultation</i>	S, U, P, T (high season)
8	<i>Supplementary equipment available for providing information</i>	Nil
9	<i>ATS units provided with information</i>	Nil
10	<i>Additional information (limitation of service, etc.)</i>	Nil

SUPE AD 2.11-12 RUNWAY PHYSICAL CHARACTERISTICS

<i>Designations RWY NR</i>	<i>TRUE BRG</i>	<i>Dimensions of RWY (M)</i>	<i>Strength (PCN) and surface of RWY and SWY</i>	<i>THR coordinates. RWY end coordinates. THR geoid undulation</i>	<i>THR elevation and highest elevation of TDZ of precision APP RWY</i>
1	2	3	4	5	6
02	004.72°	570 x 20	- Asphalt concrete	345443.06S 0545513.53W 345453.84S 0545514.48W GUND 12.6 M	THR 20 M/66 FT
20	184.72°	570 x 20	- Asphalt concrete	345424.62S 0545511.68W 345424.62S 0545511.68W GUND 12.6 M	THR 10 M/33 FT TDZ 16 M/53 FT
<i>Slope of RWY-SWY</i>	<i>SWY dimensions (M)</i>	<i>CWY dimensions (M)</i>	<i>Strip dimensions (M)</i>	<i>OFZ</i>	<i>Remarks</i>
7	8	9	10	11	12
-1%/+1%/-0.72% (65 M) (85 M) (690 M)	Nil	Nil	630 x 60	Nil	Nil
+0.72%/-1%/+1% (690 M) (85 M) (65 M)	Nil	Nil	630 x 60	Nil	Nil

SUPE AD 2.11-13 DECLARED DISTANCES

<i>RWY Designator</i>	<i>TORA (M)</i>	<i>TODA (M)</i>	<i>ASDA (M)</i>	<i>LDA (M)</i>	<i>Remarks</i>
1	2	3	4	5	6
02	840	840	840	570	Nil
20	570	570	840	840	Nil

SUPE AD 2.11-14 APPROACH AND RUNWAY LIGHTING

<i>RWY Desig- nator</i>	<i>APCH LGT type LEN INTST</i>	<i>THR LGT colour WBAR</i>	<i>VASIS (MEHT) PAPI</i>	<i>TDZ, LGT LEN</i>	<i>RWY Centre Line LGT Length, spacing, colour, INTST</i>	<i>RWY edge LGT LEN, spacing colour INTST</i>	<i>RWY End LGT colour WBAR</i>	<i>SWY LGT LEN (M) colour</i>	<i>Remarks</i>
1	2	3	4	5	6	7	8	9	10
02	Nil	Green Red	Nil	Nil	Nil	840 M, 60 M White	- White Amber	Nil	Nil
20	Nil	Green Red	Nil	Nil	Nil	840 M, 60 M White	- White Amber	Nil	Nil

SUPE AD 2.11-15 OTHER LIGHTING, SECONDARY POWER SUPPLY

1	<i>ABN/IBN location, characteristics and hours of operation</i>	ABN: Building TWR/ IBN: Nil
2	<i>LDI location and LGT Anemometer location and LGT</i>	WDI: 394 M N from ARP, not lighted Anemometer: a 100 M from RWY axis
3	<i>TWY edge and centre line lighting</i>	Edge: Nil Centre: Nil
4	<i>Secondary power supply/switch-over time</i>	Secondary power supply: 26 KW (automatic manual) for the entire aerodrome.
5	<i>Remarks</i>	Nil

SUPE AD 2.11-16 HELICOPTER LANDING AREA

1	<i>Coordinates TLOF or THR of FATO</i>	Nil
2	<i>TLOF and/or FATO elevation M/FT</i>	Nil
3	<i>TLOF and FATO area dimensions, surface, strength, marking</i>	Nil
4	<i>True and MAG BRG FATO</i>	Nil
5	<i>Declared distance available</i>	Nil
6	<i>APP and FATO lighting</i>	Nil
7	<i>Remarks</i>	Nil

SUPE AD 2.11-17 ATS AIRSPACE

1	<i>Designation and lateral limits</i>	PUNTA DEL ESTE ATZ Circle, radius 3 NM centred at 345447S/ 0545509W.
2	<i>Vertical limits</i>	GND up to 300 M
3	<i>Airspace classification</i>	☛ G
4	<i>ATS unit call sign Language(s)</i>	☛ Nil Spanish
5	<i>Transition altitude</i>	900 M
6	<i>Remarks</i>	☛ See page AD 2.11-19 "SUPE AD 2.11-20 LOCAL TRAFFIC ☛ REGULATIONS

SUPE AD 2.11-18 ATS COMMUNICATION FACILITIES

<i>Service designation</i>	<i>Call sign</i>	<i>Frequency</i>	<i>Hours of operation</i>	<i>Remarks</i>
1	2	3	4	5
NIL	NIL	118.7 MHZ	As AD	Nil
NIL	NIL	NIL	NIL	NIL

SUPE AD 2.11-19 RADIO NAVIGATION AND LANDING AIDS

<i>Type of aid, MAG VAR, Type of supported OP (for VOR/ILS/MLS, give declination)</i>	<i>ID</i>	<i>Frequency</i>	<i>Hours of operation</i>	<i>Position of transmitting antenna coordinates</i>	<i>Elevation of DME transmitting antenna</i>	<i>Remarks</i>
1	2	3	4	5	6	7
NIL						

SUPE AD 2.11-20 LOCAL TRAFFIC REGULATIONS

1. General

Punta del Este "El Jagüel" Dptal Airport. is an uncontrolled aerodrome and operated exclusively for VFR flights. VFR transit departing or arriving, shall comply with the Flight General Rules set out in LAR91.

Aircraft on arrival receive traffic information and aerodrome available for Curbelo Tower 118.3 MHz frequency and will be guided by it to the limits of ATZ Punta del Este "El Jagüel" Dptal airport.

By entering the "El Jagüel" ATZ aircrafts change frequency to 118.7 MHz and issue a message informing its position in the air, which will also do entering the holding pattern for runway in use, turning to the final track and when they leave the runway. The manoeuvres in the ATZ, the traffic pattern and landing, are the responsibility of the pilot in command.

Aircraft departure, issued a message to air traffic reporting their intentions, so will before entering the runway before takeoff. The taxiway and takeoff manoeuvres are the responsibility of the pilot in command.

Aircraft departing and foreseeing affect Carrasco TMA or airspace class "C" shall:

- 1) before starting engines, call by phone to SULS TWR to obtain the approval of the Flight Plan and the Transponder Code; and
- 2) before take-off, transmit by frequency 118.7 Mhz your intentions;
- 3) After take-off:
 - If you keep in Airspace Class "G" (departure RBO between 350° to 190° at or below 2000 FT) once you leave Punta del Este ATZ, you shall listen on frequencies 119.2 Mhz / 128.5 Mhz;
 - If you need to enter to Carrasco TMA (departure RBO between 350° to 190° above 2000 FT), request entry in frequencies 119.2 Mhz / 128.5 Mhz or, failing that, in 118.3 Mhz and wait for authorization;
 - If you need to enter the C. Curbelo CTR (departure RBO between 190° to 350°) to stay in it or in transit to Carrasco TMA, request it in frequency 118.3 Mhz while staying within Punta del Este ATZ and wait for authorization.

All flights shall comply with the filing of flight plan according to current regulations.

☛ It is recalled that in Punta del Este "The Jagüel" Dptal Airport the circuit pattern for runway 02 will be carried out exclusively by right.

☛ Caution is advised on final approach to Runway 02 and climb on takeoff from Runway 20 for the presence of natural obstacles (trees) in the vicinity of THR 02.

2. Airport Regulation

Aerodrome available for general public use permitted only daytime operations.

3. Limitations of use

Aerodrome is licensed for use for aircraft maximum takeoff weight (MTOW) of up to 5,700 KG.

4. Minimum vertical separation in the Traffic Circuit of Punta del Este.

Nil.

☛ 5. Aircraft carrying out parachute activities

☛ 5.1 SUPE departure procedure

- 5.1.1 The aircraft shall request by telephone confirmation of the existence of their Flight Plan to SULTS (42559777 ext. 125) or to SULTS TWR frequency 118.3 Mhz.
- 5.1.2 SULTS TWR shall approve the Flight Plan and provide the SSR Code for the flight. The length of the activity must be notified for the adjustment of the Flight Plans in the system.
- 5.1.3 After take-off, you shall fly towards the mouth of the Maldonado stream "La Barra", ascending to 1500/2000 FT altitude. At the take-off, it shall broadcast its position on the 118.7 MHZ frequency.
- 5.1.4 To continue the ascent, you shall contact Carrasco APP.
In case of not having contact with Carrasco APP, it shall contact SULTS TWR to request to continue with the ascent. SULTS TWR shall coordinate with Carrasco APP the ascent authorization
- 5.1.7 Once Carrasco APP has radio contact, the ascent to the proposed flight level shall be authorized according to the Flight Plan, subject to traffic in SULTS and current meteorological conditions.
- 5.1.8 Once the proposed flight level has been reached, Carrasco APP shall authorize the aircraft to fly to the vertical of SUPE, for parachute jump.
- 5.1.9 The aircraft shall request authorization from the Carrasco APP to start the parachute jump.
- 5.1.10 Once the launch is finished, it shall request authorization to start the descent.

☛ 5.2 Procedure for descent to SUPE

- 5.2.1 The descent shall take place in the area assigned by Carrasco APP.
- 5.2.2. Once 3000 FT altitude is reached, the aircraft shall communicate with SULTS TWR to continue the descent to 1000 FT and enter Airspace Class "G", information on frequency 118.7 MHZ.

☛ 5.3 Note

- 5.3.1 If there is more than one aircraft in parachute activity, traffic information must be given to each of them. The aircrafts must maintain visual contact between them.

SUPE AD 2.11-24 CHARTS RELATED TO AN AERODROME

● Aerodrome/Heliport Chart – ICAO AD 2.11-13

**INTENTIONALLY
LEFT BLANK**

AERODROME/HELIPORT
CHART - ICAO

34°54'47"S **ELEV 20**
054°55'09"W **(66)**

TWR 118.7
APRON 000.0

PUNTA DEL ESTE/
Dptal. El Jagüel

RWY	DIRECTION	THR	GUND	BEARING STRENGTH
02	017°	34°54'43.06"S 54°55'13.53"W	12.6 M	Runway, Apron and Taxiway
20	197°	34°54'24.62"S 54°55'11.68"W	12.6 M	No data

ELEVATIONS IN METRES (AND FEET)
DIMENSIONS IN METRES
BEARINGS ARE MAGNETIC

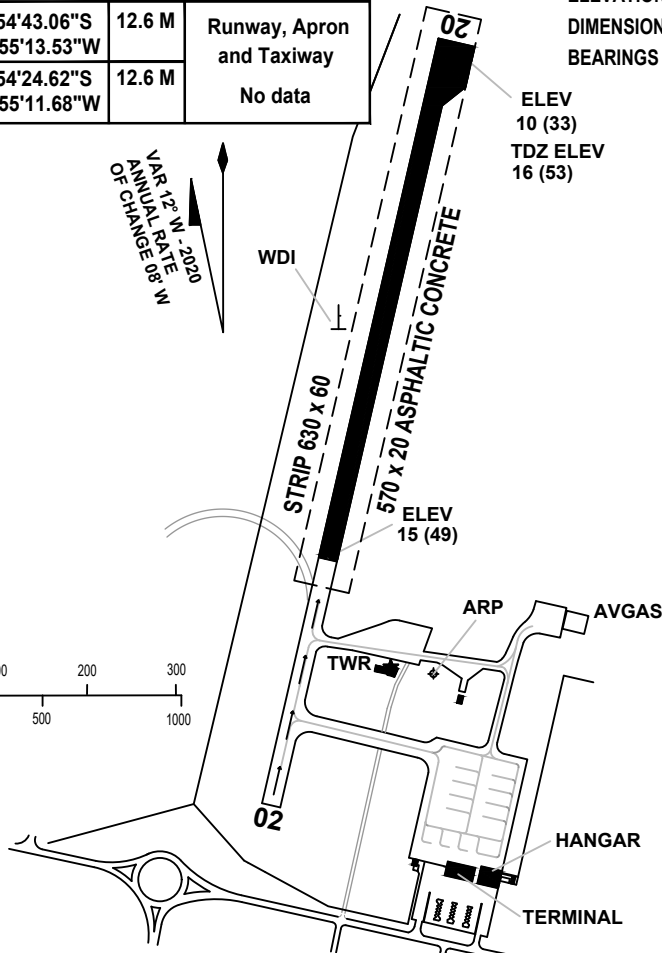
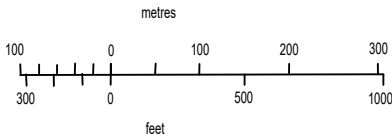
TAXIWAYS 23 WIDE

VAR 13° M -2020
ANNUAL RATE N
OF CHANGE 80

WDI

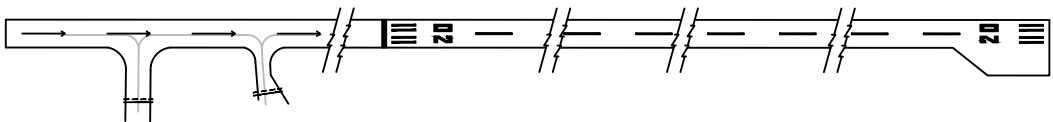
STRIP 630 x 60
570 x 20 ASPHALTIC CONCRETE
ELEV 15 (49)

ELEV 10 (33)
TDZ ELEV 16 (53)

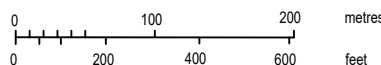
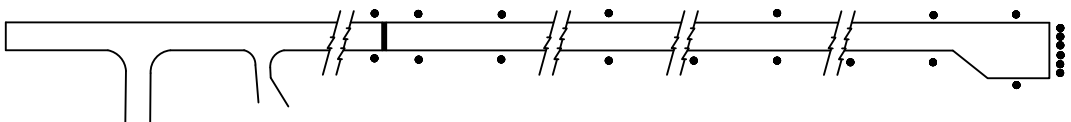


Change:
RWY 01/19 by 02/20

MARKING AIDS RWY 02/20 AND EXIT TWY



LIGHTING AIDS RWY 02/20 AND EXIT TWY



**INTENTIONALLY
LEFT BLANK**