

AD 2. AERODROMES**SUMO AD 2.6-1 AERODROME LOCATION INDICATOR AND NAME**

SUMO - MELO/International of Cerro Largo

SUMO 2.6-2 AERODROME GEOGRAPHICAL AND ADMINISTRATIVE DATA

1	ARP coordinates and site at AD	322033S 0541319W Location: 193 M SE from THR 07
2	Direction and distance from (city)	11 KM NW from Melo city
3	Elevation/Reference temperature	111 M (364 FT) / 31°C
4	Geoid undulation at AD ELEV PSN	13 M
5	MAG VAR/Annual change	14° W (JAN 2020) / 0.14° increasing
6	AD operator, address, telephone, telefax, e-mail address, AFS address, website address	Dirección Nacional de Aviación Civil e Infraestructura Aeronáutica Aeropuerto Internacional de Cerro Largo Melo. P.O. Box 36 CP. 37000 MELO ☎Tel.: 4640 2422, +598 98537345 (Puerta del Sur) Telefax: 4640 2027 e-mail: sumo@dinacia.gub.uy AFS: SUMOYTYX
7	Types of traffic permitted (IFR/VFR)	VFR
8	Remarks	Nil

SUMO AD 2.6-3 OPERATIONAL HOURS

1	AD Operator	☎H24
2	Customs and immigration	☎O/R
3	Health and sanitation	In the city
4	AIS Briefing Office	Nil
5	ATS Reporting Office (ARO)	☎MON - SUN 10:00 to 22:00 UTC.
6	MET Briefing Office	☎In the city
7	ATS	☎MON - SUN 10:00 to 22:00 UTC.
8	Fuelling	As AD Operator
9	Handling	As AD Operator
10	Security	As AD Operator
11	De-icing	Nil
12	Remarks	Nil

SUMO AD 2.6-4 HANDLING SERVICES AND FACILITIES

1	<i>Cargo-handling facilities</i>	Nil
2	<i>Fuel/oil types</i>	☛AVGAS 100, JET-A1/ Oil: Nil
3	<i>Fuelling facilities/capacity</i>	☛AVGAS 100: 30.000 L ☛JET-A1: 5.000 L
4	<i>De-icing facilities</i>	Nil
5	<i>Hangar space for visiting aircraft</i>	In the Air club
6	<i>Repair facilities for visiting aircraft</i>	Minor repairs
7	<i>Remarks</i>	Nil

SUMO AD 2.6-5 PASSENGER FACILITIES

1	<i>Hotels</i>	In the city
2	<i>Restaurants</i>	In the city
3	<i>Transportation</i>	Taxis and limos O/R
4	<i>Medical facilities</i>	In the city
5	<i>Bank and Post Office</i>	In the city
6	<i>Tourist Office</i>	In the city - Intendencia Municipal - Tel. 0462- 6551
7	<i>Remarks</i>	Nil

SUMO AD 2.6-6 RESCUE AND FIRE FIGHTING SERVICES

1	<i>AD category for fire fighting</i>	☛CAT 3. A FORD F550 chassis vehicle, 4x4, Rosenbauer extinguishing equipment 1300 L of water, 130 L of AFFF level C foam, 250 KG of Purple K PK92 chemical powder.
2	<i>Rescue equipment</i>	☛CAT 3 (LAR 153)
3	<i>Capability for removal of disabled aircraft</i>	Nil
4	<i>Remarks</i>	☛Nil

SUMO AD 2.6-7 SEASONAL AVAILABILITY - CLEARING

1	<i>Types of clearing equipment</i>	Nil
---	------------------------------------	-----


SUMO AD 2.6-8 APRONS, TAXIWAYS AND CHECK LOCATIONS/POSITIONS DATA


1	<i>Apron surface and strength</i>	<ul style="list-style-type: none"> ☛ Surface: asphaltic concrete ☛ Strength: 22/F/C/X/T
2	<i>Taxiway width, surface and strength</i>	<ul style="list-style-type: none"> ☛ Width: 17 M ☛ Surface: asphaltic concrete ☛ Strength: 22/F/C/X/T
3	<i>Altimeter checkpoint location and elevation</i>	☛ THR RWY 07 (322028.96S/0541325.01W) 111 M/364 FT
4	<i>VOR/INS checkpoints</i>	Nil
5	<i>Remarks</i>	Nil

SUMO AD 2.6-9 SURFACE MOVEMENT GUIDANCE AND CONTROL SYSTEM AND MARKINGS

1	<i>Use of aircraft stand ID signs, TWY guide lines and visual docking/parking guidance system of aircraft stands</i>	Nil
2	<i>RWY and TWY markings and LGT</i>	<ul style="list-style-type: none"> ☛ RWY 07: Markings: RWY designation, centre line, THR and aiming point. ☛ Lights: RWY THR identification, THR, RWY edge, centre line, RWY end ☛ RWY 25: Markings: RWY designation, centre line, THR and aiming point. ☛ Lights: RWY THR identification, THR, RWY edge, centre line, RWY end ☛ TWY: Markings: TWY centre line, RWY holding position. ☛ Lights: TWY edge lights.
3	<i>Stop bars</i>	Nil
4	<i>Remarks</i>	Nil

SUMO AD 2.6-10 AERODROME OBSTACLES

 In Area 2					
<i>OBST ID/ Designation</i>	<i>OBST type</i>	<i>OBST position</i>	<i>ELEV/HGT</i>	<i>Markings/ Type, colour</i>	<i>Remarks</i>
a	b	c	d	e	f
See AD Obstacle Chart – Type A					

 In Area 3					
<i>OBST ID/ Designation</i>	<i>OBST type</i>	<i>OBST position</i>	<i>ELEV/HGT</i>	<i>Markings/ Type, colour</i>	<i>Remarks</i>
a	b	c	d	e	f
See AD Obstacle Chart – Type A					

SUMO AD 2.6-11 METEOROLOGICAL INFORMATION PROVIDED

1	<i>Associated MET Office</i>	MELO
2	<i>Hours of service MET Office outside hours</i>	As AD Operator
3	<i>Office responsible for TAF preparation Periods of validity</i>	Surveillance MET Office CARRASCO (O/R)
4	<i>Trend forecast Interval of issuance</i>	Nil
5	<i>Briefing/consultation provided</i>	O/R
6	<i>Flight documentation Language(s) used</i>	Nil
7	<i>Charts and other information available for briefing or consultation</i>	Nil
8	<i>Supplementary equipment available for providing information</i>	Nil
9	<i>ATS units provided with information</i>	MELO TWR
10	<i>Additional information (limitation of service, etc.)</i>	Nil

SUMO AD 2.6-12 RUNWAY PHYSICAL CHARACTERISTICS

Designations RWY NR	TRUE BRG	Dimensions of RWY (M)	Strength (PCN) and surface of RWY and SWY	THR coordinates. RWY end coordinates. THR geoid undulation		THR elevation and highest elevation of TDZ of precision APP RWY
				5	6	
07	☛059.36°	☛1 394 x 30	☛22/F/C/X/T ☛Concrete ☛asfáltico	☛322028.96S ☛0541325.01W ☛322028.96S ☛0541325.01W GUND 13.1 M	THR 111 M/364 FT	
25	☛239.35°	☛1 394 x 30	☛22/F/C/X/T ☛Concrete ☛asfáltico	☛322005.91S ☛0541239.18W ☛322005.91S ☛0541239.18W GUND 13.1 M	☛THR 103 M/ ☛338 FT	
Slope of RWY-SWY	SWY dimensions (M)	CWY dimensions (M)	Strip dimensions (M)	OFZ	RESA (M)	Remarks
7	8	9	10	11	12	13
☛+0.98%/-0.9%/ -1.34%/-1.28%/-0.02%/ -0.51% (85 M) (340 M) (175 M) (236 M) (404 M) (154 M)	Nil	Nil	☛1 514 x 140	Nil	☛Nil	Nil
☛+0.51%/+0.02%/ +1.28%/+1.34%/+0.9%/ -0.98% (154 M) (404 M) (236 M) (175 M) (340 M) (85 M)	Nil	Nil	☛1 514 x 140	Nil	☛Nil	Nil

SUMO AD 2.6-13 DECLARED DISTANCES

RWY Designator	TORA (M)	TODA (M)	ASDA (M)	LDA (M)	Remarks
1	2	3	4	5	6
07	☛1 394	☛1 394	☛1 394	☛1 394	Nil
25	☛1 394	☛1 394	☛1 394	☛1 394	Nil

SUMO AD 2.6-14 APPROACH AND RUNWAY LIGHTING

<i>RWY Desig- nator</i>	<i>APCH LGT type LEN INTST</i>	<i>THR LGT colour WBAR</i>	<i>VASIS (MEHT) PAPI</i>	<i>TDZ, LGT LEN</i>	<i>RWY Centre Line LGT Length, spacing, colour, INTST</i>	<i>RWY edge LGT LEN, spacing colour INTST</i>	<i>RWY End LGT colour WBAR</i>	<i>SWY LGT LEN (M) colour</i>	<i>Remarks</i>
1	2	3	4	5	6	7	8	9	10
07	Nil	☛Green	☛PAPI	Nil	Nil	☛1400 M, ☛50 M ☛White ☛Amber	☛Red	Nil	Nil
25	Nil	☛Green	☛PAPI	Nil	Nil	☛1400 M, ☛50 M ☛White ☛Amber	☛Red	Nil	Nil

SUMO AD 2.6-15 OTHER LIGHTING, SECONDARY POWER SUPPLY

1	<i>ABN/IBN location, characteristics and hours of operation</i>	ABN: Nil / IBN: Nil
2	<i>LDI location and LGT Anemometer location and LGT</i>	☛WDI: 140 M THR 07, LGT: lighted ☛Anemometer: 75 M from RWY centre line, NW direction
3	<i>TWY edge and centre line lighting</i>	☛Edge: Blue Centre: Nil
4	<i>Secondary power supply/switch-over time</i>	☛Secondary power supply: 88 KW emergency generator. Switch-over time: 10 SEC (manual/automatic)
5	<i>Remarks</i>	Nil

SUMO AD 2.6-16 HELICOPTER LANDING AREA

1	<i>Coordinates TLOF or THR of FATO</i>	Nil
2	<i>TLOF and/or FATO elevation M/FT</i>	Nil
3	<i>TLOF and FATO area dimensions, surface, strength, marking</i>	Nil
4	<i>True and MAG BRG FATO</i>	Nil
5	<i>Declared distance available</i>	Nil
6	<i>APP and FATO lighting</i>	Nil
7	<i>Remarks</i>	Nil

SUMO AD 2.6-17 ATS AIRSPACE

1	<i>Designation and lateral limits</i>	MELO CTR Arc, radius 10 NM (18.5 KM) centred at 322033S 0541319W MELO ATZ Arc, radius 4 NM (7.4 KM) centred at 322033S 0541319W
2	<i>Vertical limits</i>	CTR: GND up to FL 055 ATZ: GND up to 450 m
3	<i>Airspace classification</i>	☛ From MON to SUN from 10:00 to 22:00 UTC: "C"; others: "G".
4	<i>ATS unit call sign Language(s)</i>	Melo Tower Spanish
5	<i>Transition altitude</i>	900 M
6	<i>Remarks</i>	Nil

SUMO AD 2.6-18 ATS COMMUNICATION FACILITIES

<i>Service designation</i>	<i>Call sign</i>	<i>Frequency</i>	<i>Hours of operation</i>	<i>Remarks</i>
1	2	3	4	5
TWR	Melo Tower	118.6 MHZ 122.1 MHZ	H24	Nil

SUMO AD 2.6-19 RADIO NAVIGATION AND LANDING AIDS

<i>Type of aid, MAG VAR, Type of supported OP (for VOR/ILS/MLS, give declination)</i>	<i>ID</i>	<i>Frequency</i>	<i>Hours of operation</i>	<i>Position of transmitting antenna coordinates</i>	<i>Elevation of DME transmitting antenna</i>	<i>Remarks</i>
1	2	3	4	5	6	7

SUMO AD 2.6-20 LOCAL TRAFFIC REGULATIONS

☛ Nil

SUMO AD 2.6-21 NOISE ABATEMENT PROCEDURES

☛ Nil

SUMO AD 2.6-22 FLIGHT PROCEDURES

Minimum vertical separation in the Traffic Circuit of Melo.

Nil.

Use limitations

Aerodrome restricted to operations in diurnal visual meteorological conditions.

SUMO AD 2.6-24 CHARTS RELATED TO AN AERODROME

Aerodrome/Heliport Chart – ICAO	AD 2.6-13
• Aerodrome Obstacle Chart – ICAO Type A – RWY 07/25.....	AD 2.6-15

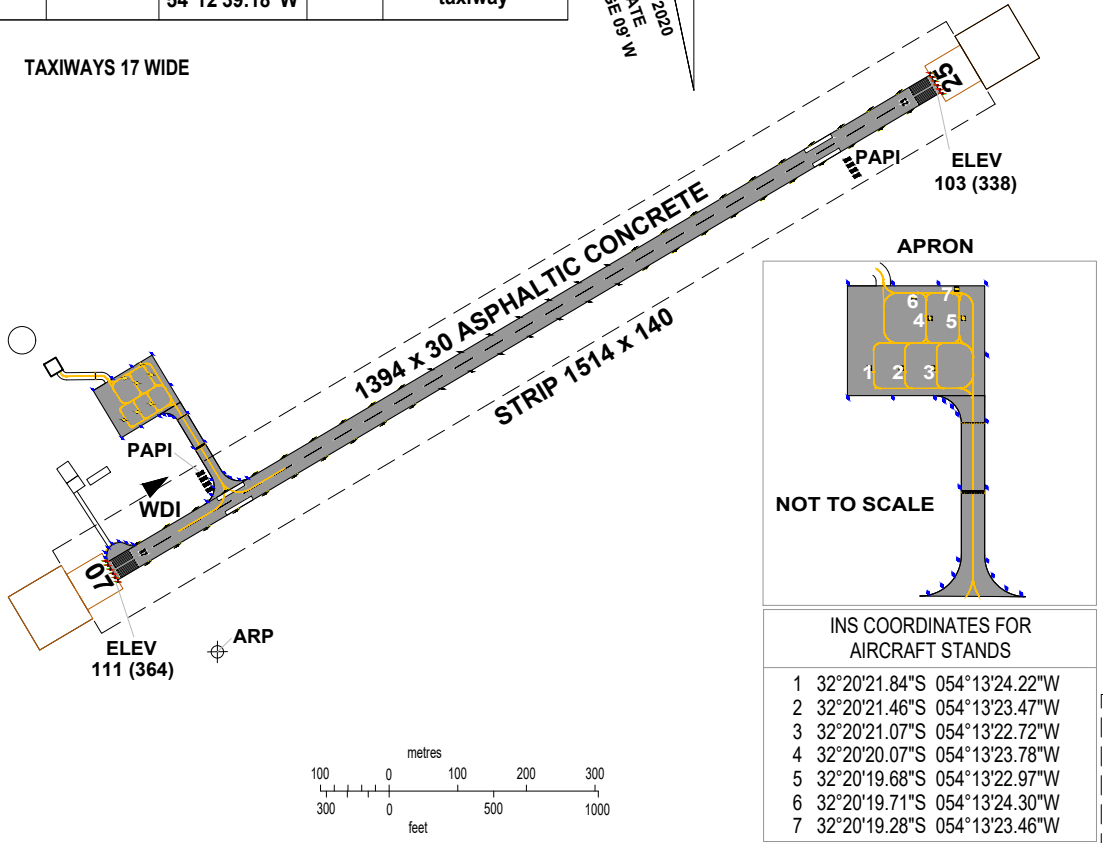
AERODROME/HELIPORT **32°20'33"S** **ELEV 111** **TWR 118.6 - 122.1** **MELO/Intl de Cerro Largo**
 CHART - ICAO **054°13'19"W** **(364)** **APRON 118.6 - 122.1**

RWY	DIRECTION	THR	GUND	BEARING STRENGTH
07	073°	32°20'28.96"S 54°13'25.01"W	13.1 M	PCN 22/F/C/X/T
25	253°	32°20'05.91"S 54°12'39.18"W	13.1 M	Apron and taxiway

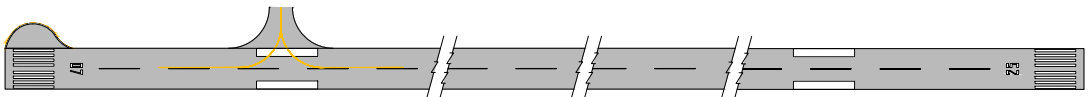
VAR 14° W - 2020
ANNUAL RATE OF CHANGE 0.9 W

ELEVATIONS IN METRES (AND FEET)
DIMENSIONS IN METRES
BEARINGS ARE MAGNETIC

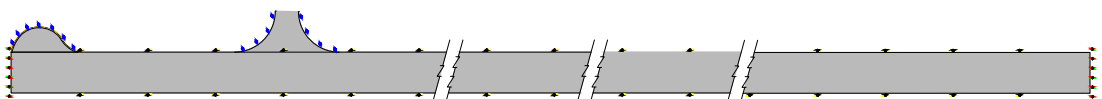
TAXIWAYS 17 WIDE



MARKING AIDS RWY 07/25 AND EXIT TWY



LIGHTING AIDS RWY 07/25 AND EXIT TWY



0 100 200 metres
0 200 400 600 feet

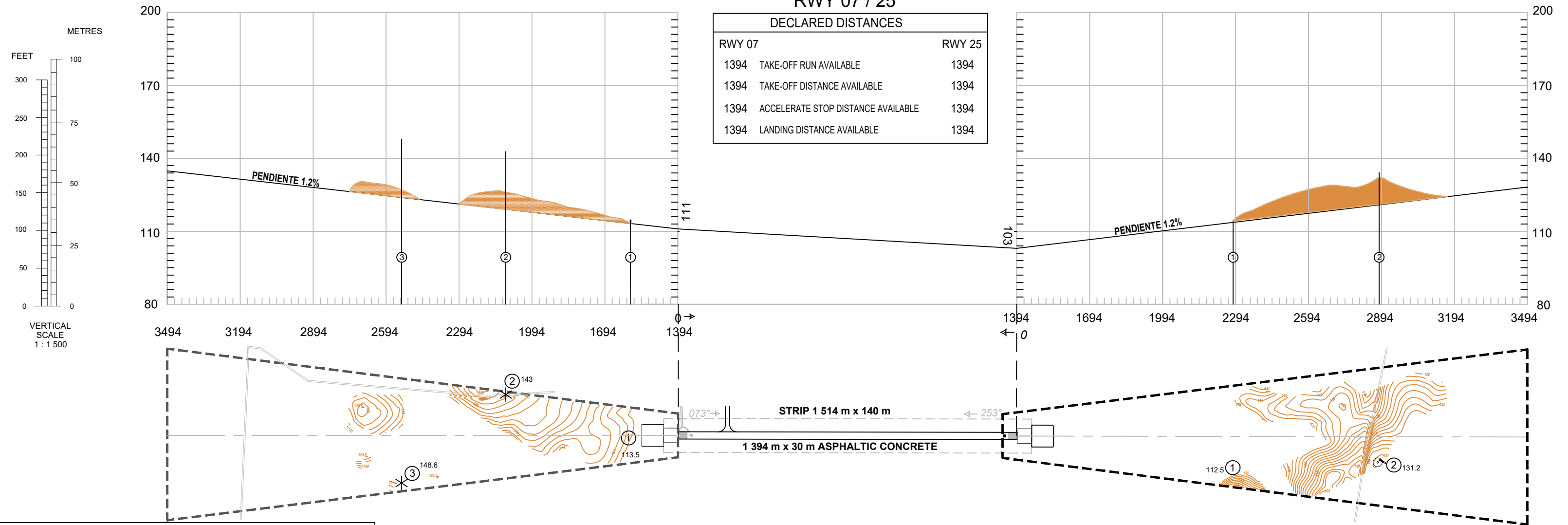
**INTENTIONALLY
LEFT BLANK**

AERODROME OBSTACLE CHART - ICAO

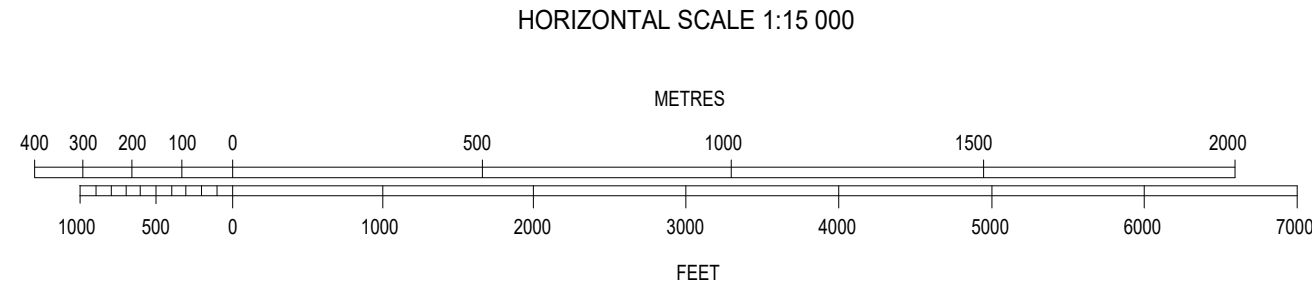
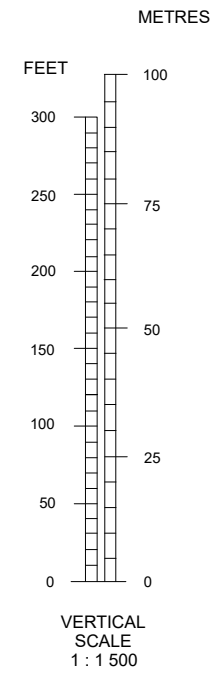
TYPE A (OPERATING LIMITATIONS)

DIMENSIONS AND ELEVATIONS IN METRES

MAGNETIC VARIATION 10° W JAN 2020



RWY 07 / 25		
DECLARED DISTANCES		
RWY 07		RWY 25
1394	TAKE-OFF RUN AVAILABLE	1394
1394	TAKE-OFF DISTANCE AVAILABLE	1394
1394	ACCELERATE STOP DISTANCE AVAILABLE	1394
1394	LANDING DISTANCE AVAILABLE	1394



LEGEND	
IDENTIFICATION NUMBER	①
TREE OR SHRUB	*
HIGHWAY	====
POLE, TOWER, SPIRE, ANTENNA, ETC.	⊙
BUILDING OR LARGE STRUCTURE	■
RAILROAD	—+—+—+—
TERRAIN CONTOUR	~
TERRAIN PENETRATING OBSTACLE PLANE	▲

ORDER OF ACCURACY
HORIZONTAL 00 M
VERTICAL 00 M

Change:
New chart

**INTENTIONALLY
LEFT BLANK**