

SUPPLEMENT
AIP URUGUAY

Telephone: 598 2604 0408 ext.

5101, 5203

Telefax: 598 2604 0067

AFTN: SUMUYNXX

e-mail: aispub@dinacia.gub.uy

Dirección Nacional de Aviación Civil e Infraestructura Aeronáutica

Departamento AIS

Aeropuerto Intl de Carrasco "Gral. Cesáreo L. Berisso"

14000 Canelones

AIP/SUP

NR S 003

26 JUL 2025

SUMU - MONTEVIDEO/Intl de Carrasco "Gral. Cesáreo L. Berisso"

From: 26 JUL 2025 03:00 UTC

To: 04 SEP 2025 02:59 UTC

MODIFICATIONS TO SUMU MOVEMENT AREA

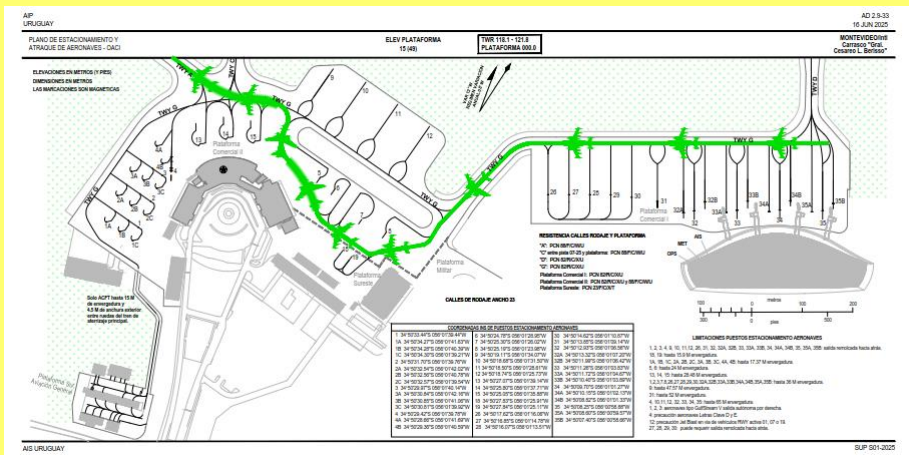
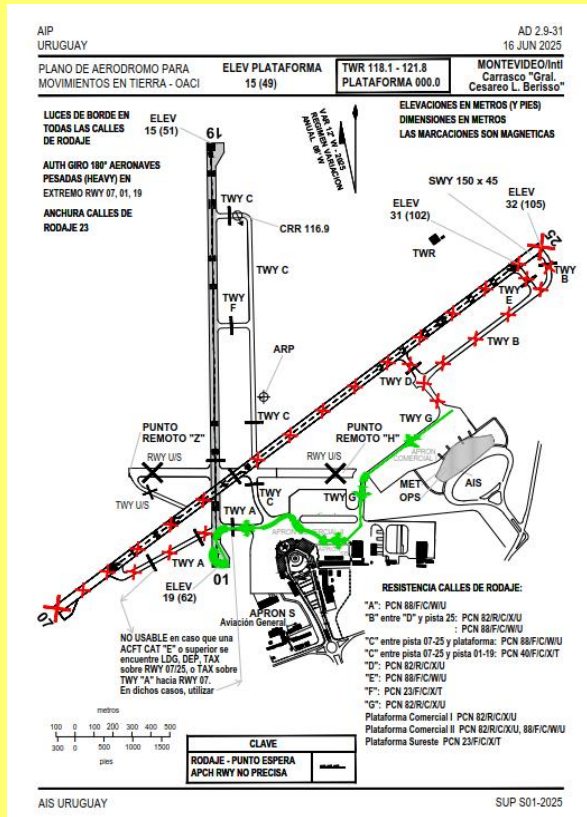
Due to construction works on Runway 07/25, operations to and from Runway 01/19 shall be instructed by ATC, based on converging traffic, as follows:

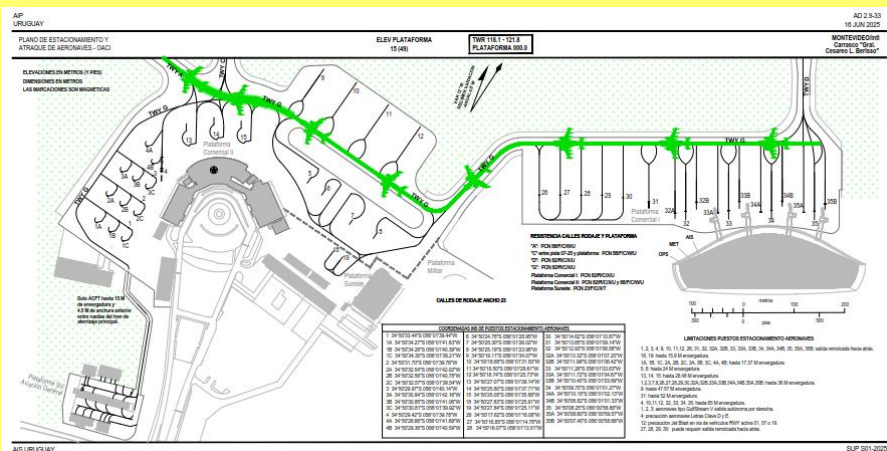
1. RUNWAY 01

1.1 Taxiing for take-off

1.1.1 From APRON Comercial I (Parking Stands 26 to 35):

- A, B or C Aircraft Type: Taxi through TWY G to APRON SE, continue to TWY G to proceed to TWY A, then RWY 01/19 to THR 01, and turn 180° for take-off.



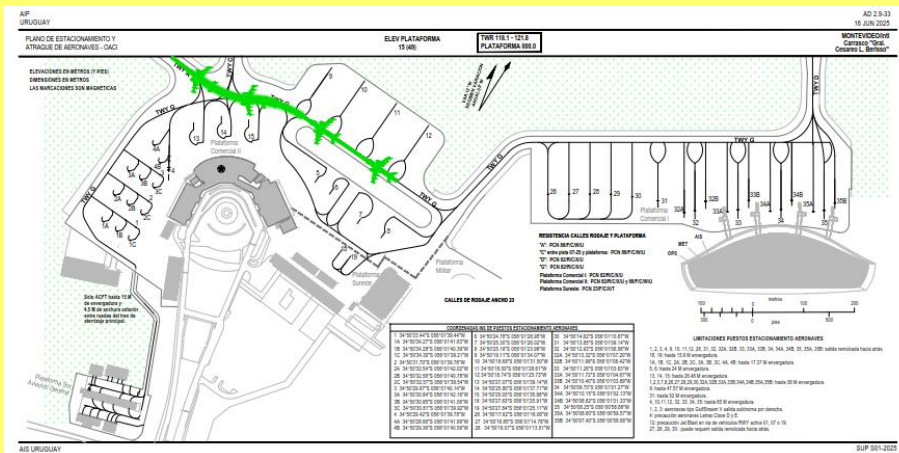
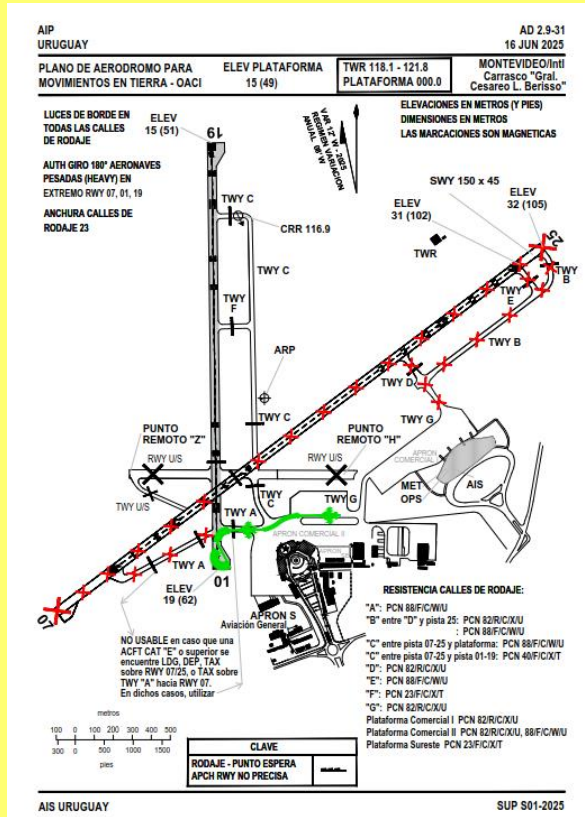


1. RUNWAY 01

1.1 Taxiing for take-off

1.1.3 From APRON Comercial II (Parking Stands 9 to 12):

- Taxi through TWY G to TWY A, then RWY 01/19 to THR 01, and turn 180° for take-off.

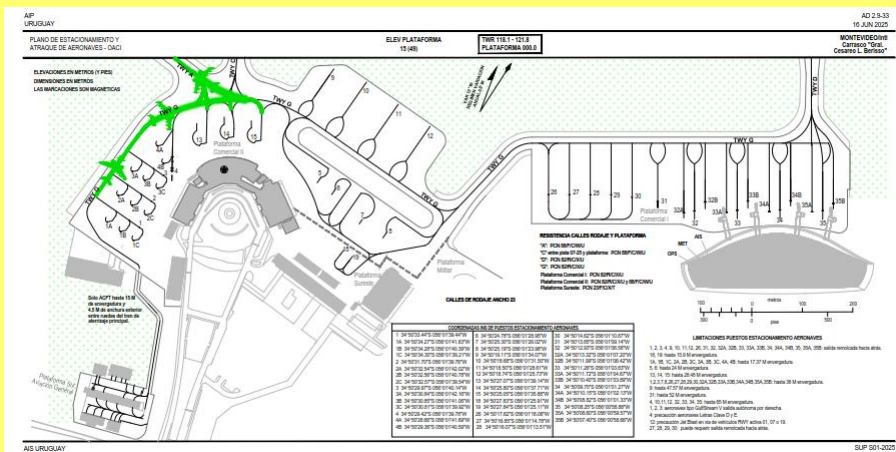
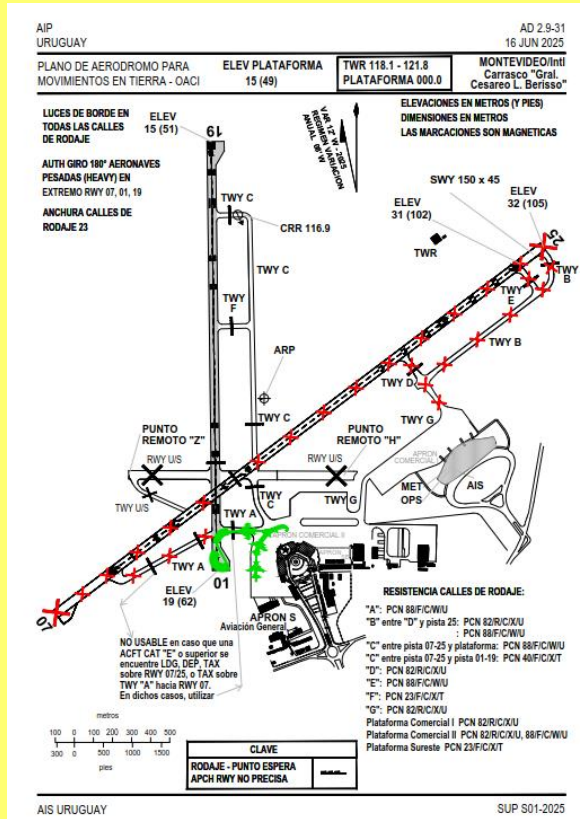


1. RUNWAY 01

1.1 Taxiing for take-off

1.1.4 From APRON Comercial II (Parking Stands 1 to 4 and 13 to 15):

- Taxi through TWY G to TWY A, then RWY 01/19 to THR 01, and turn 180° for take-off.

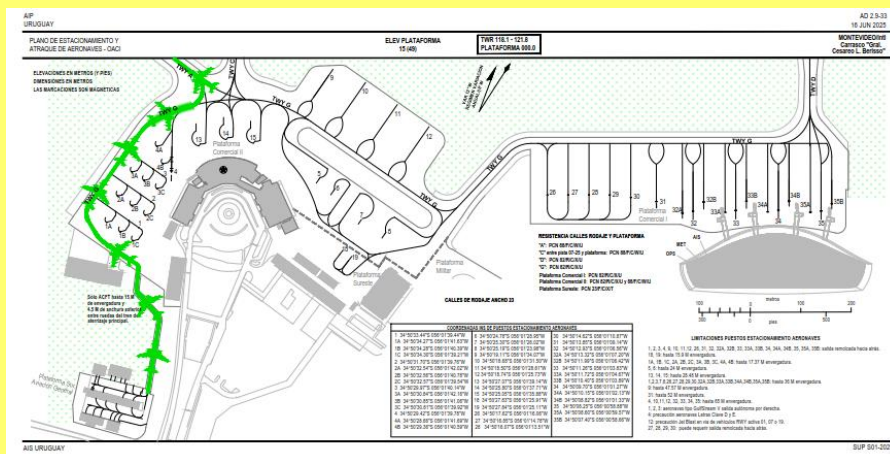
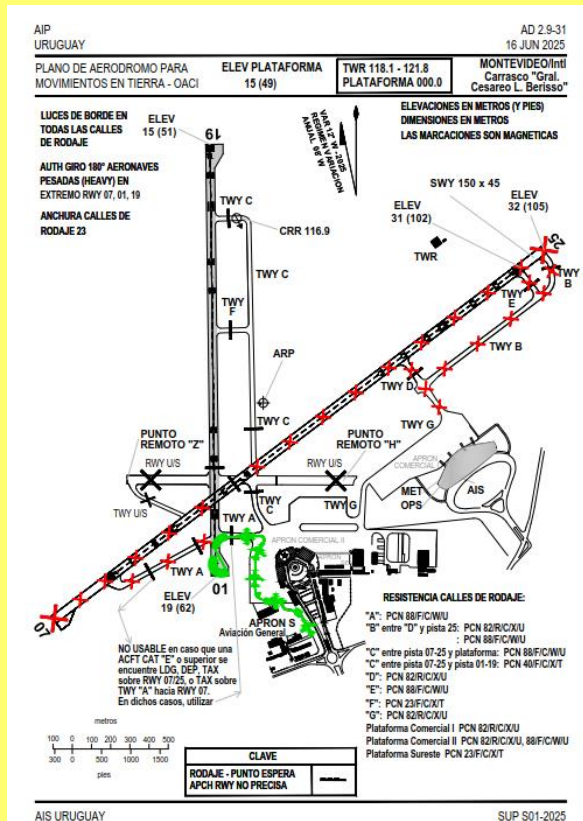


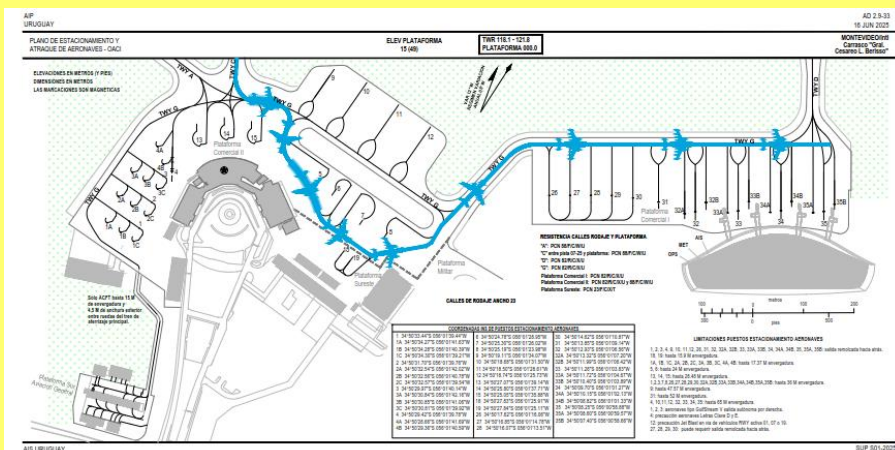
1. RUNWAY 01

1.1 Taxiing for take-off

1.1.5 From APRON S General Aviation:

- Taxi through TWY G to TWY A, then RWY 01/19 to THR 01, and turn 180° for take-off.



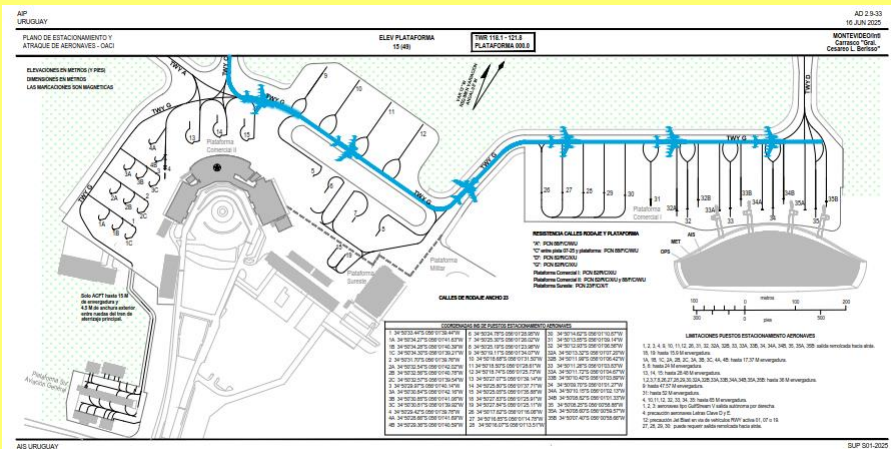
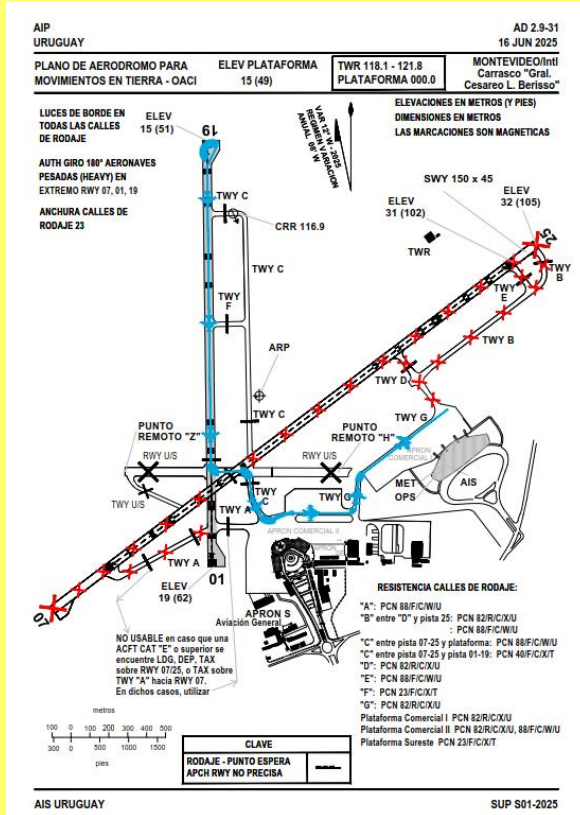


1. RUNWAY 01

1.2 Taxiing from landing

1.2.2 To APRON Comercial I (Parking Stands 26 to 35):

- A, B, C, D or E Aircraft Type: backtrack RWY 01/19, taxi through portion of RWY 07/25, then TWY C, then TWY G and continue to PRKG APRON Comercial I.

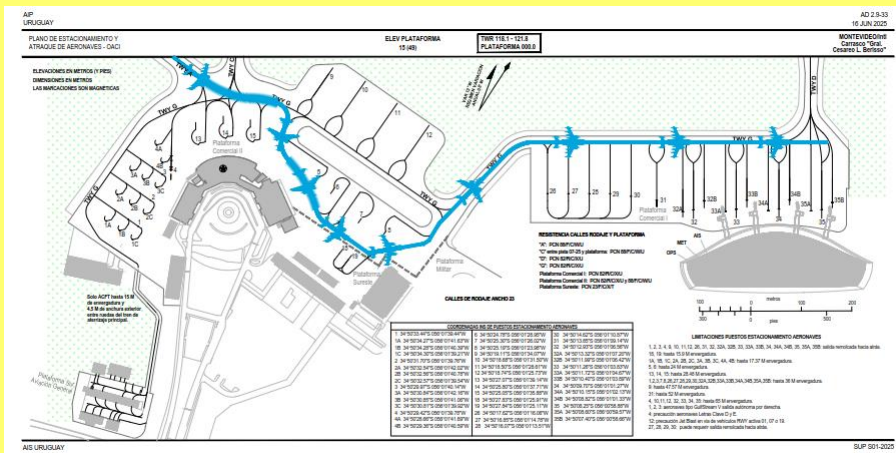
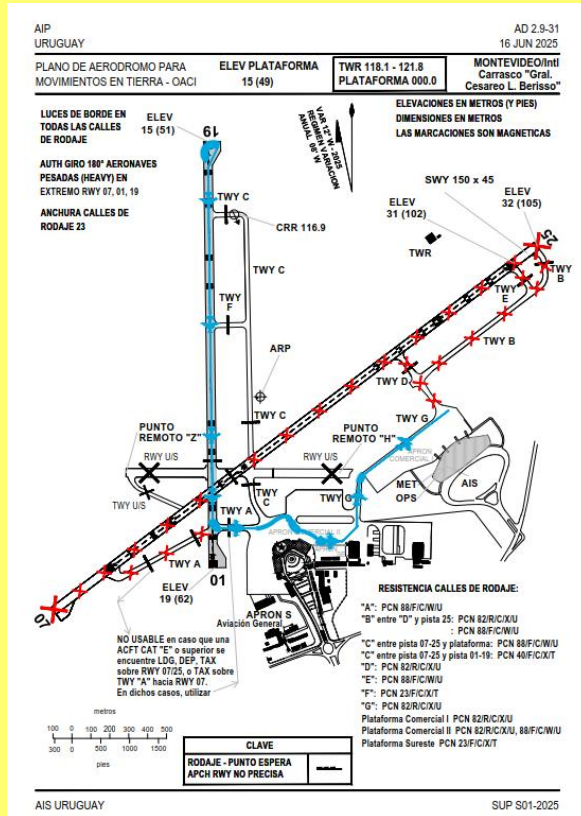


1. RUNWAY 01

1.2 Taxiing from landing

1.2.3 To APRON Comercial I (Parking Stands 26 to 35):

- A, B or C Aircraft Type: backtrack RWY 01/19, taxi through TWY A, then TWY G to APRON SE, continue onto TWY G, then onto PRKG APRON Comercial I.

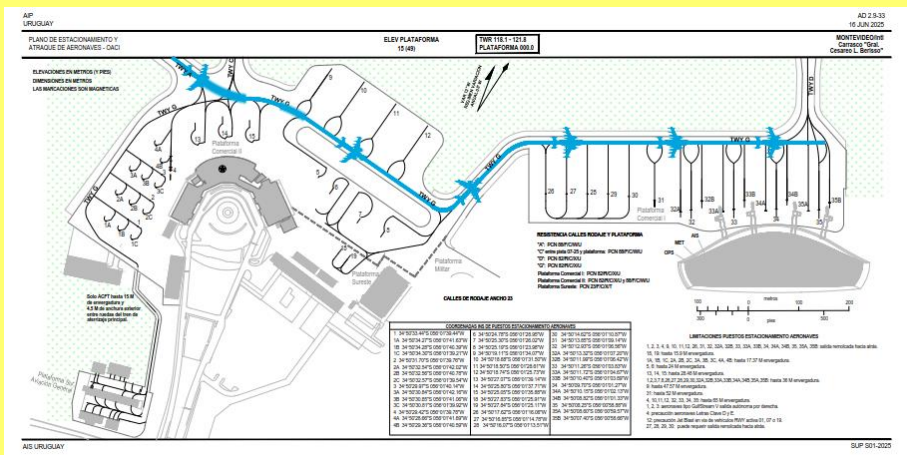
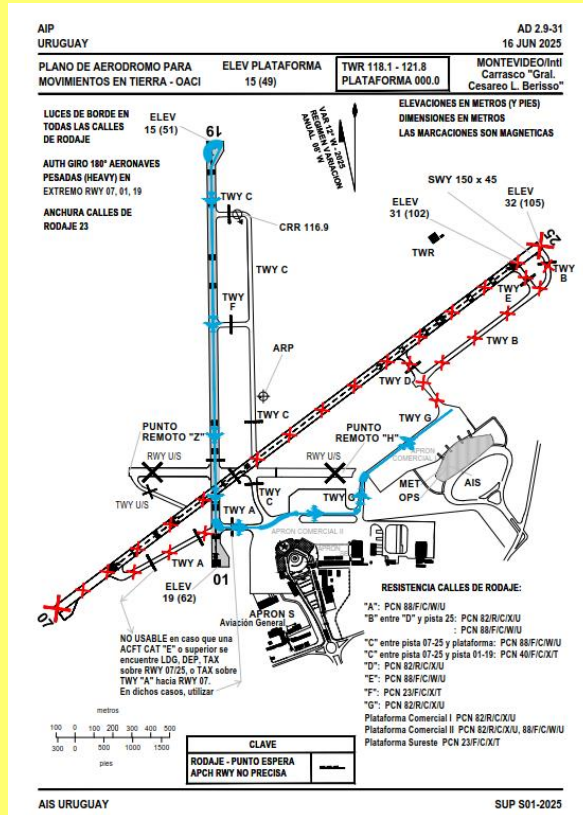


1. RUNWAY 01

1.2 Taxiing from landing

1.2.4 To APRON Comercial I (Parking Stands 26 to 35):

- A, B, C, D or E Aircraft Type: backtrack RWY 01/19, taxi through TWY A, then TWY G and continue to PRKG APRON Comercial I.

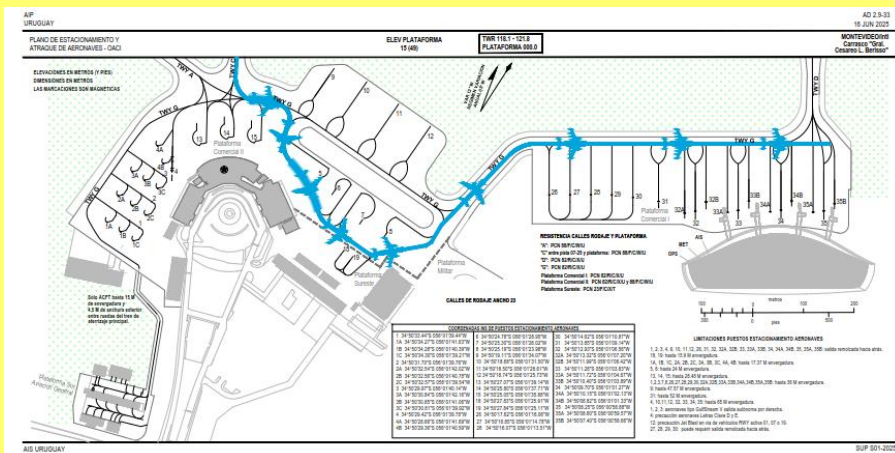
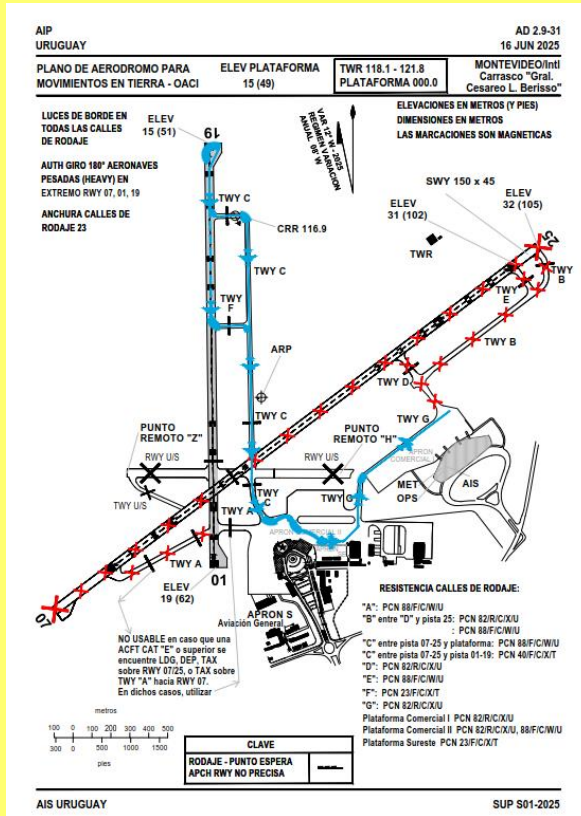


1. RUNWAY 01

1.2 Taxiing from landing

1.2.5 To APRON Comercial I (Parking Stands 26 to 35):

- A, B or C Aircraft Type: From TWY C North or TWY F, taxi through TWY C, then TWY G to APRON SE, continue onto TWY G, then onto PRKG APRON Comercial I.

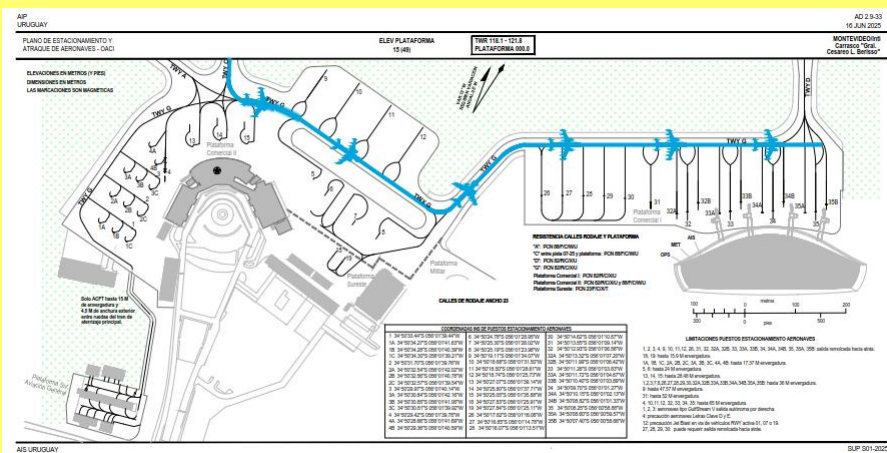
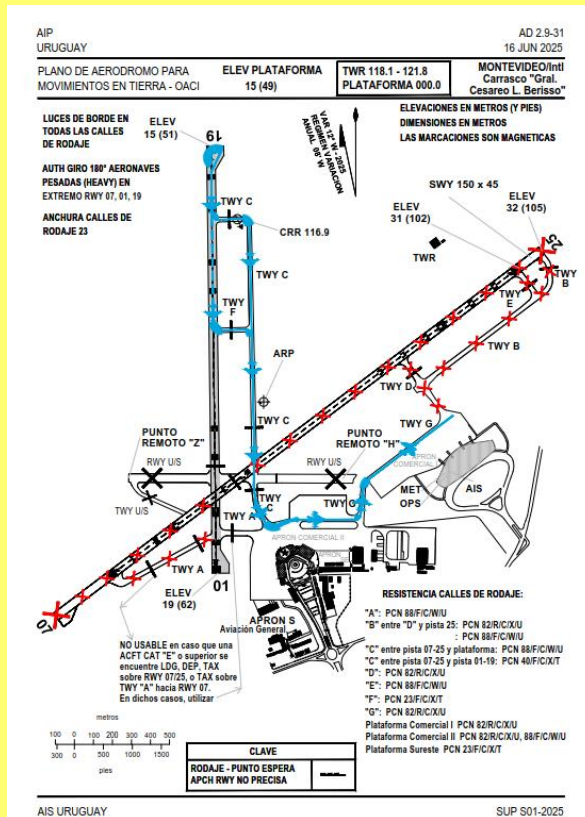


1. RUNWAY 01

1.2 Taxiing from landing

1.2.6 To APRON Comercial I (Parking Stands 26 to 35):

- A, B or C Aircraft Type: From TWY C North or TWY F, taxi through TWY C, then TWY G, then onto PRKG APRON Comercial I.

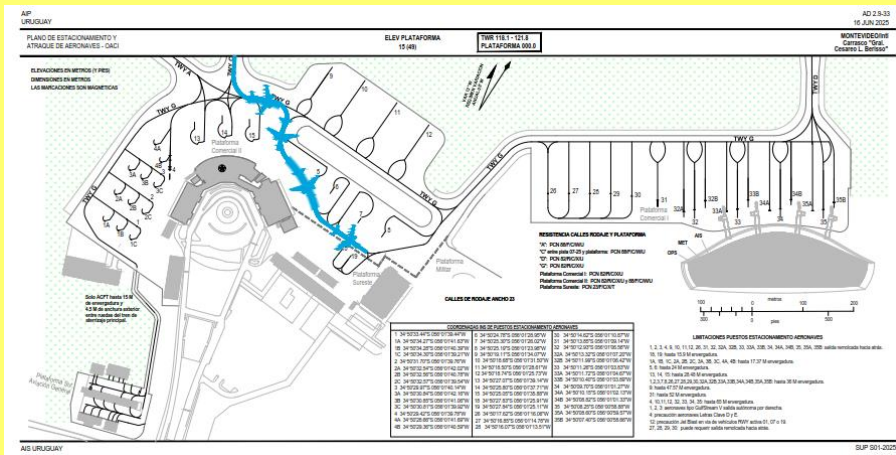
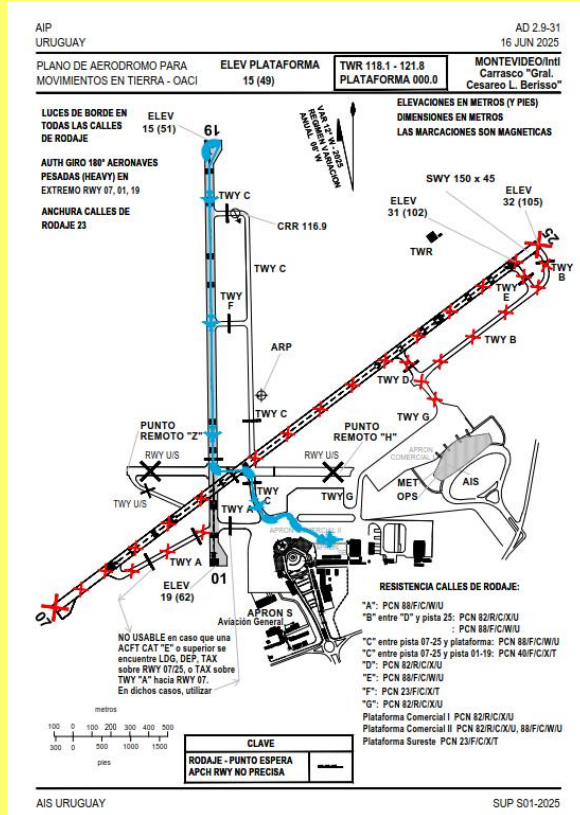


1. RUNWAY 01

1.2 Taxiing from landing

1.2.7 To APRON Comercial II:

- Backtrack RWY 01/19, taxi through portion of RWY 07/25, then TWY C, then TWY G to APRON SE.

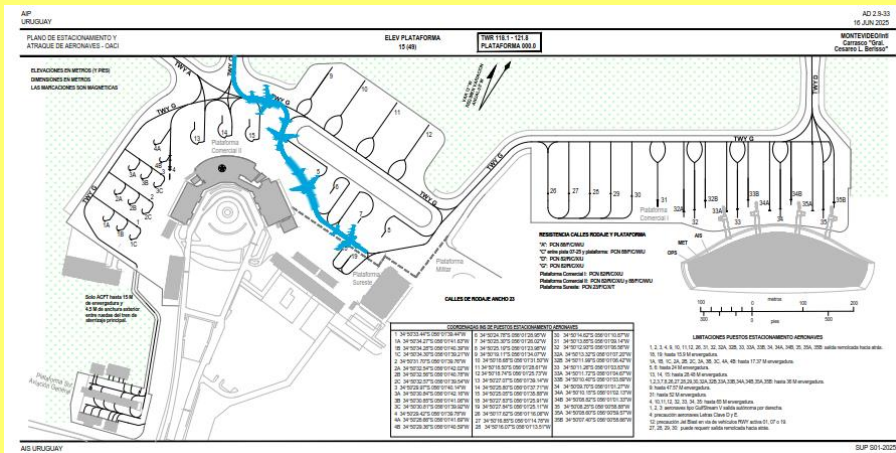
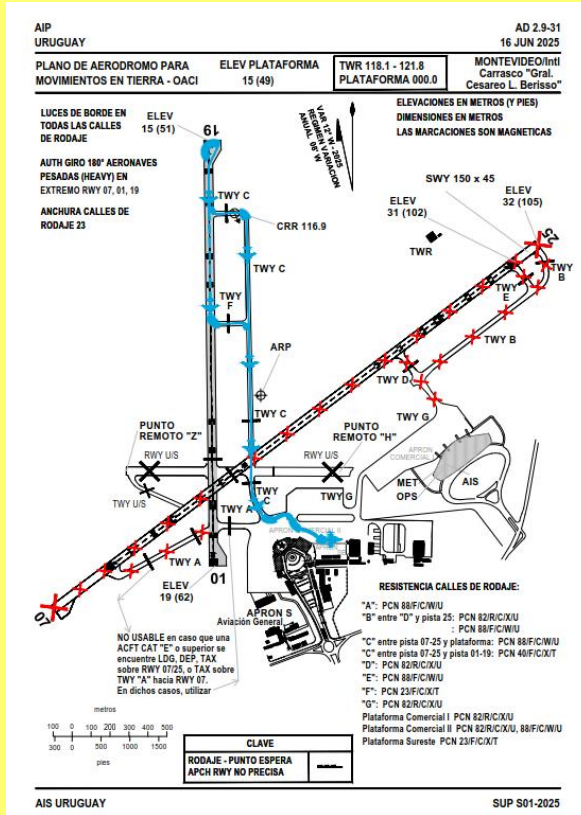


1. RUNWAY 01

1.2 Taxiing from landing

1.2.8 To APRON Comercial II:

- A, B or C Aircraft Type: from TWY C North or TWY F, taxi through TWY C, then TWY G toward APRON SE.

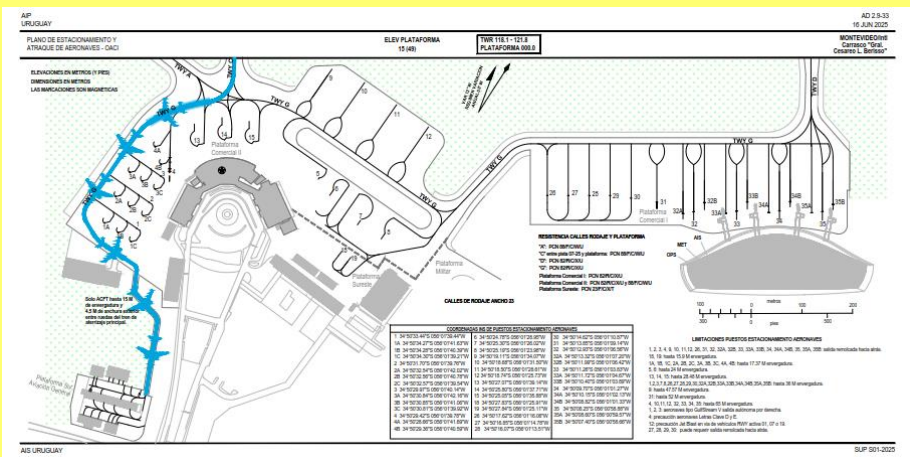
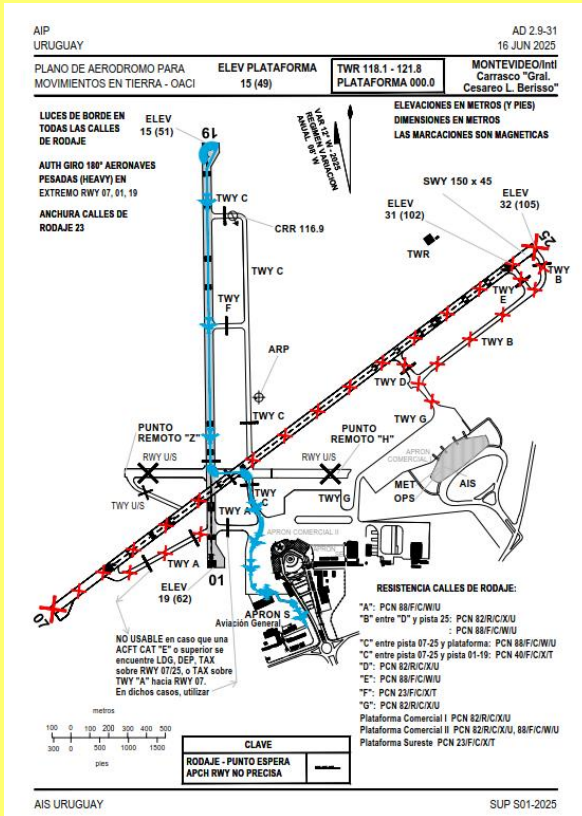


1. RUNWAY 01

1.2 Taxiing from landing

1.2.9 To APRON S General Aviation:

- Backtrack RWY 01/19, taxi through portion of RWY 07/25, then TWY C, then TWY G To APRON S General Aviation.

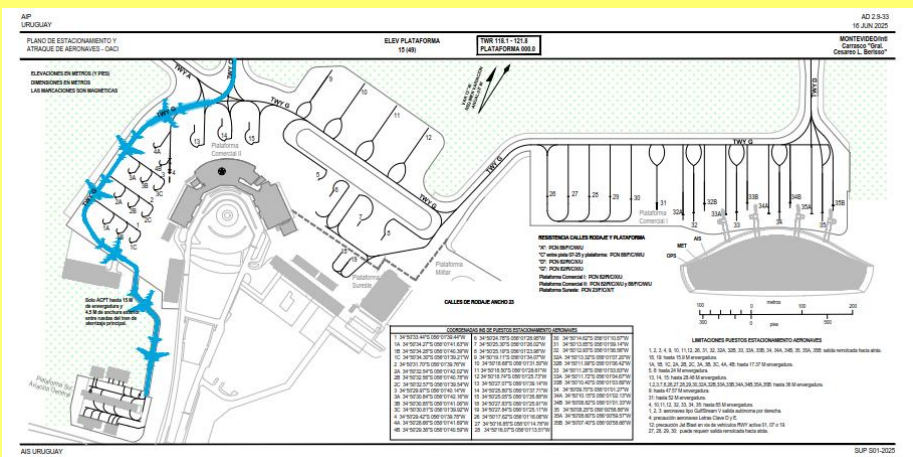
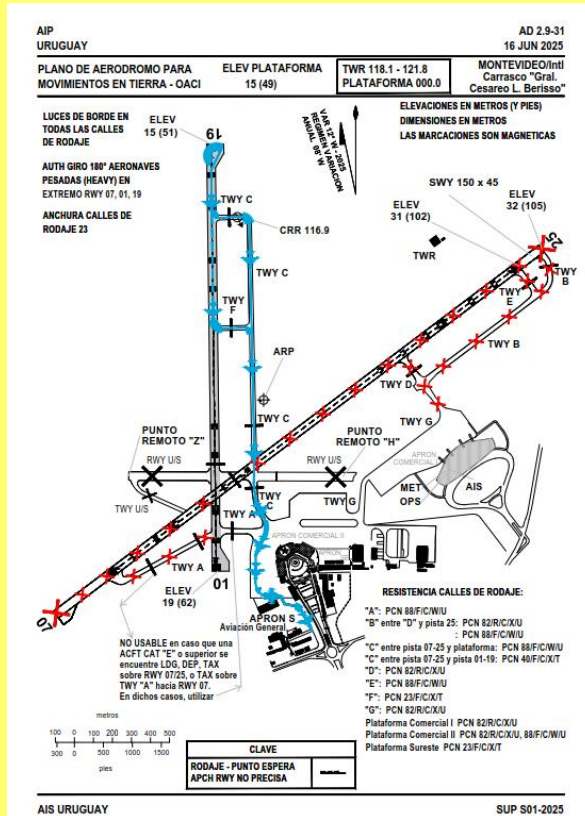


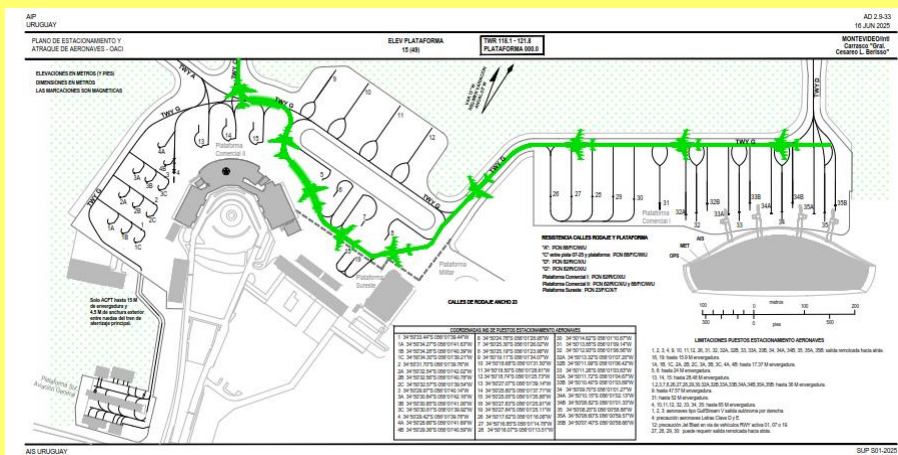
1. RUNWAY 01

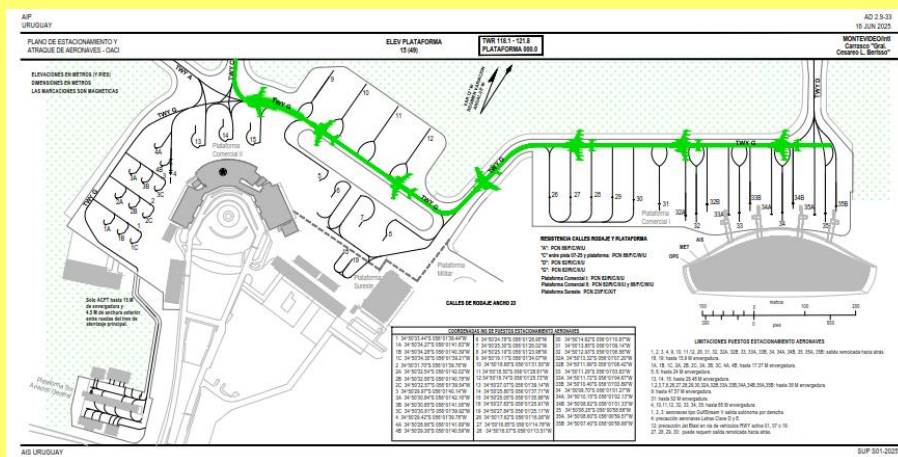
1.2 Taxiing from landing

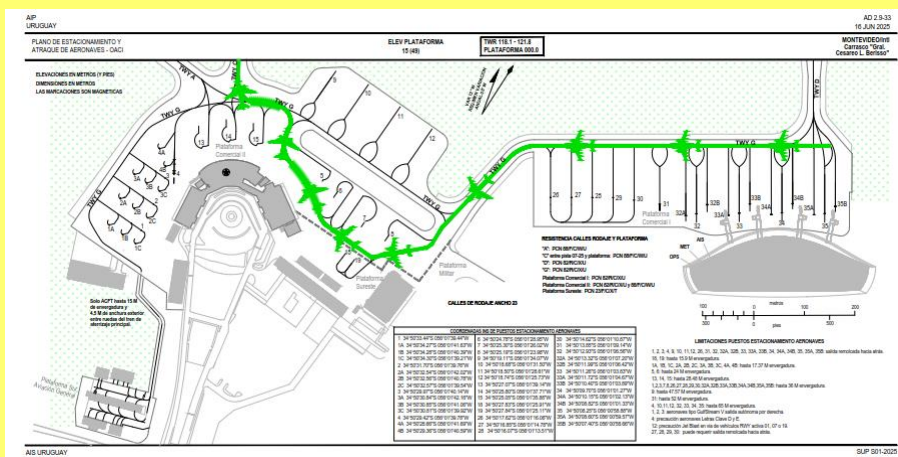
1.2.10 To APRON S General Aviation:

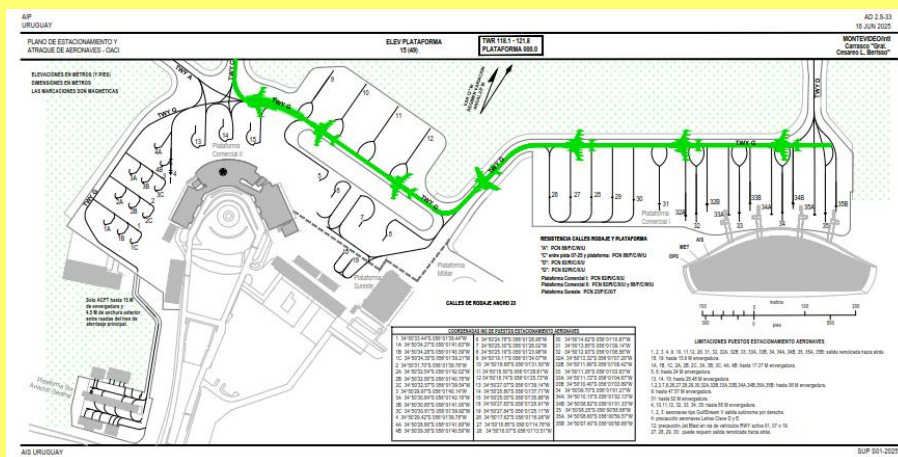
- A or B Aircraft Type (B only towed): from TWY C North or TWY F, taxi through TWY C, then TWY G To APRON S General Aviation









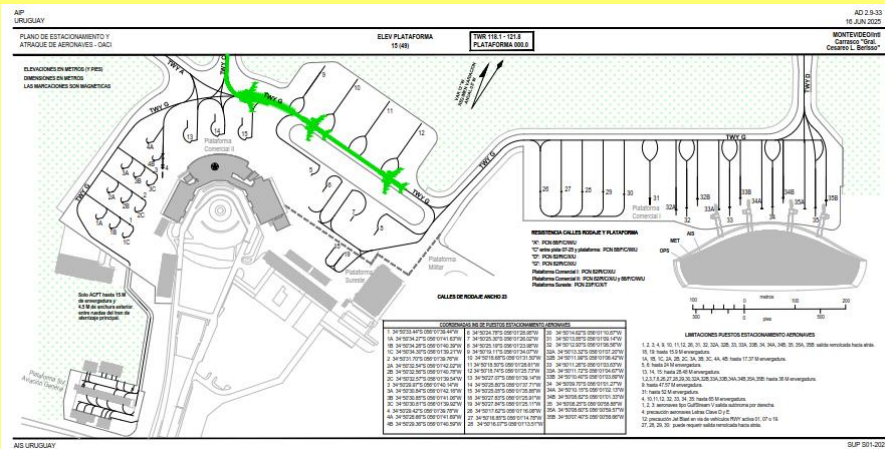
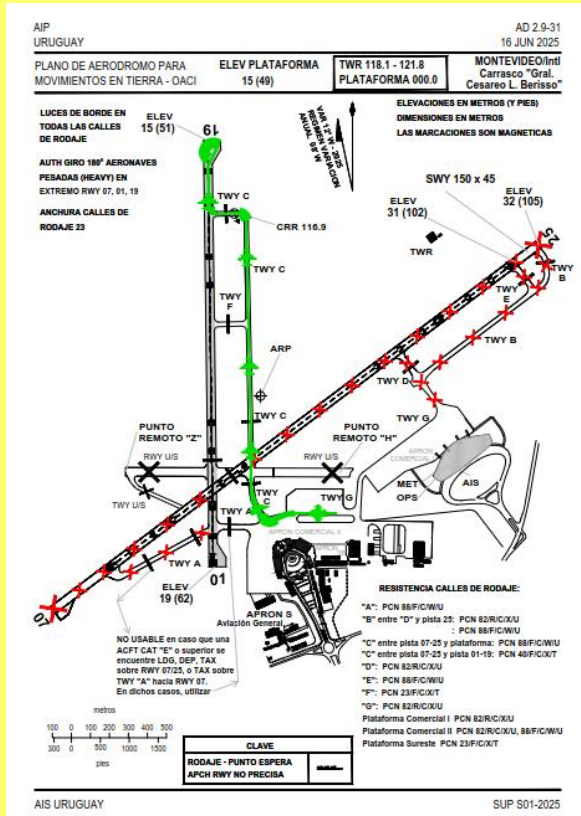


2. RUNWAY 19

2.1 Taxiing for take-off

2.1.5 From APRON Comercial II (Parking Stands 9 to 12):

- A, B or C Aircraft Type: Taxi through TWY G to proceed to TWY C, then RWY 01/19 to THR 19, and turn 180° for take-off.

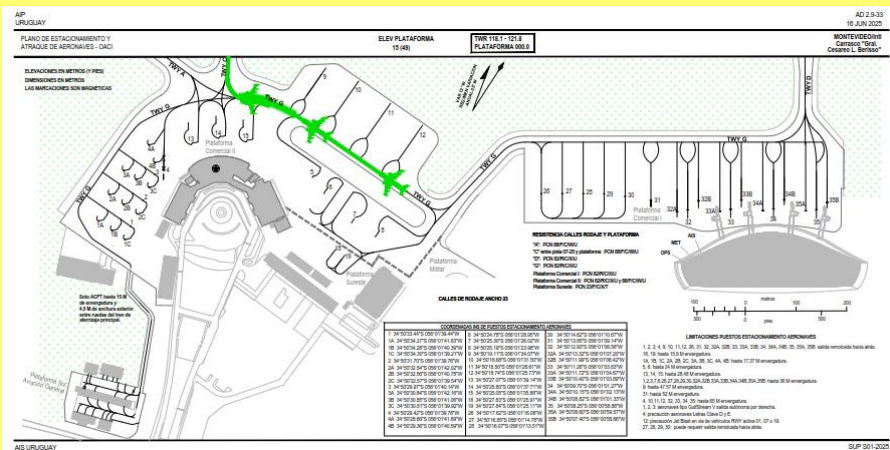
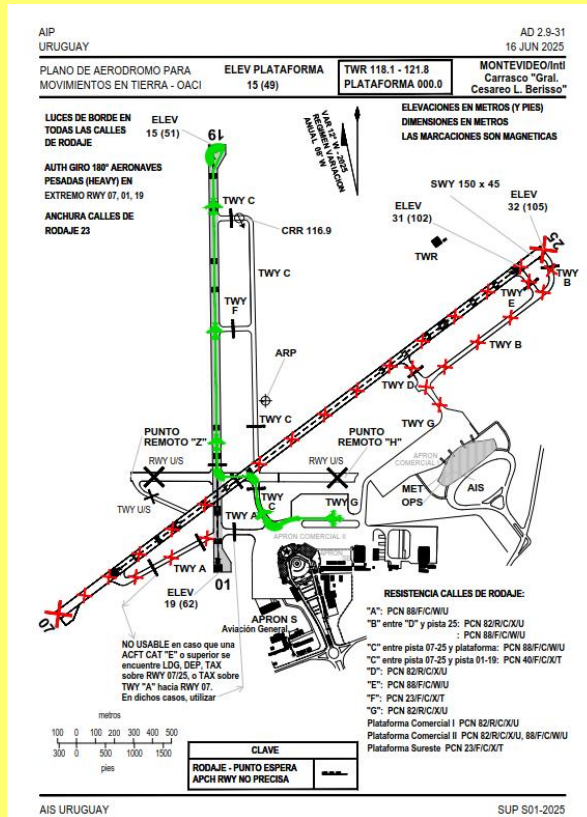


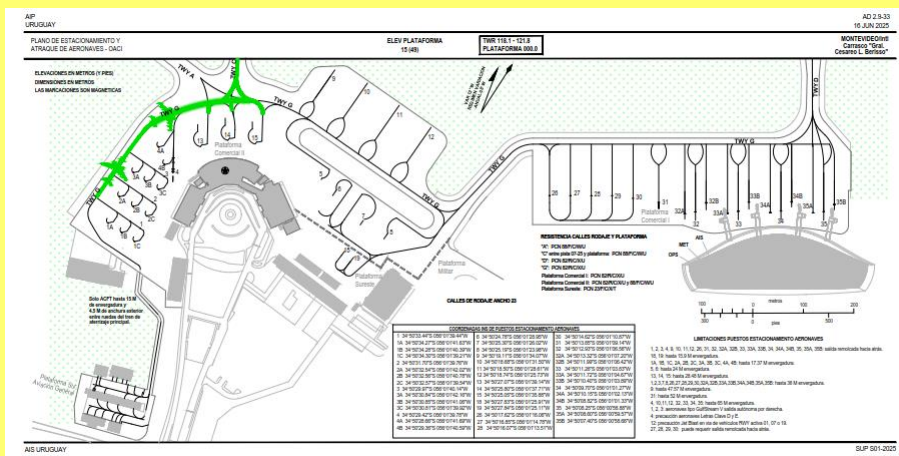
2. RUNWAY 19

2.1 Taxiing for take-off

2.1.6 From APRON Comercial II (Parking Stands 9 to 12):

- A, B, C, D or E Aircraft Type: Taxi through TWY G to continue to TWY C, taxi through portion of RWY 07/25, then RWY 01/19 to THR 19, and turn 180° for take-off.



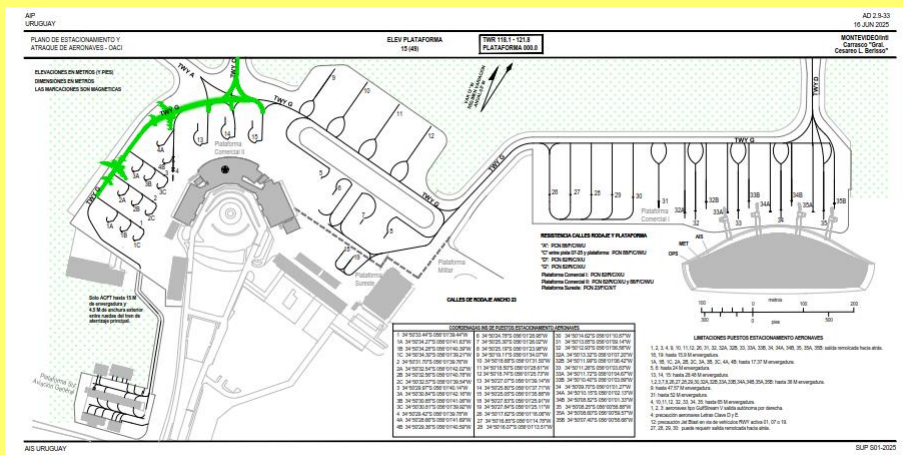
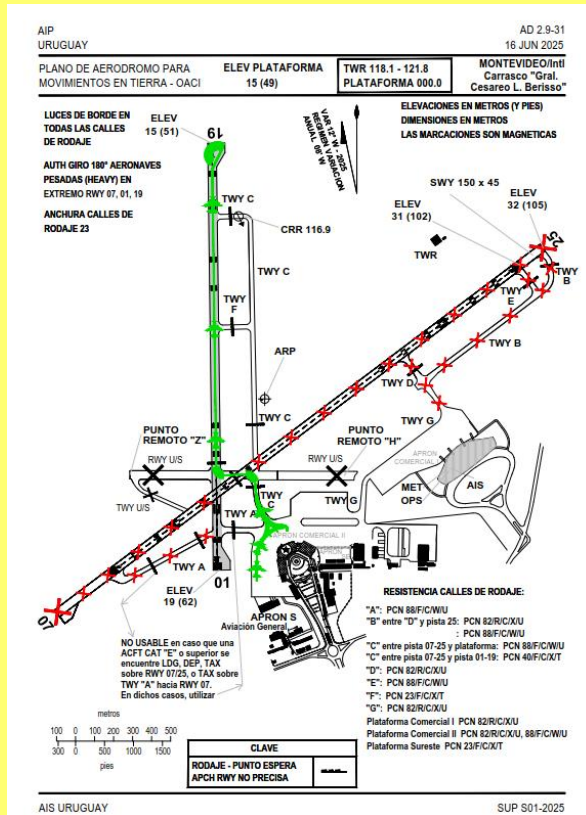


2. RUNWAY 19

2.1 Taxiing for take-off

2.1.8 From APRON Comercial II (Parking Stands 1 to 4 and 13 to 15):

- A, B, C, D or E Aircraft Type: Taxi through TWY G to continue to TWY C, taxi through portion of RWY 07/25, then RWY 01/19 to THR 19, and turn 180° for take-off.

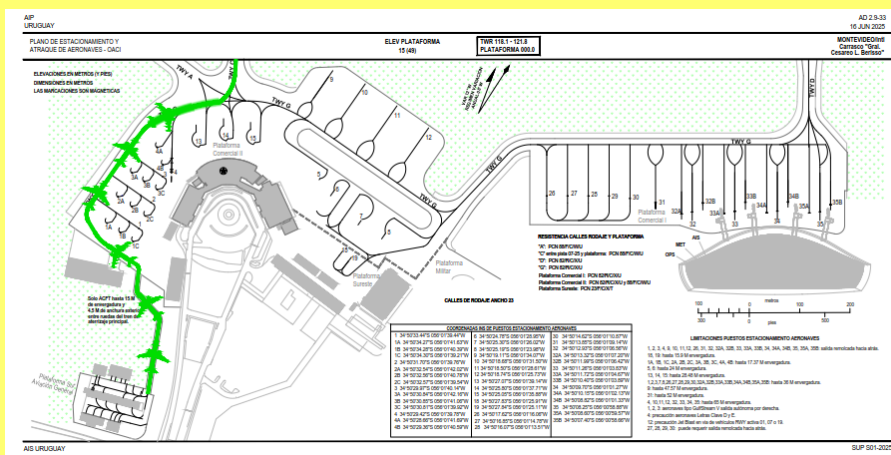
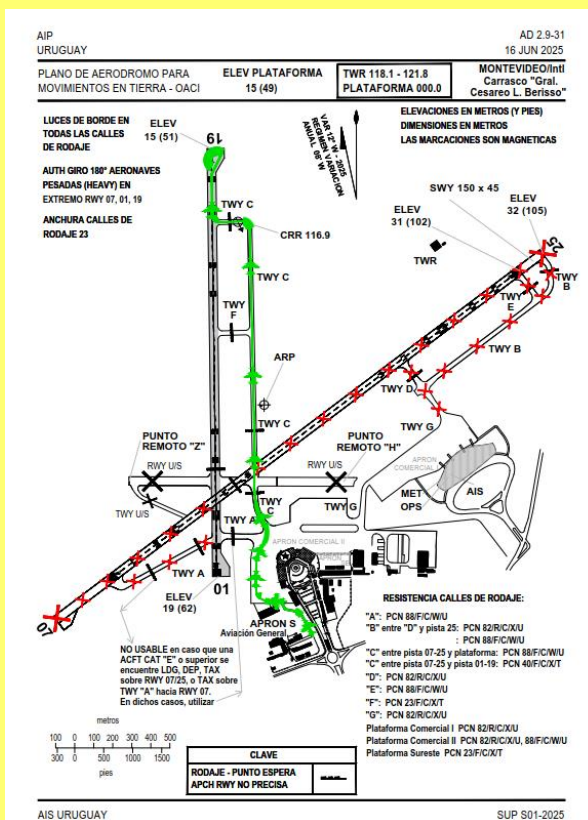


2. RUNWAY 19

2.1 Taxiing for take-off

2.1.9 From APRON S General Aviation:

- A or B Aircraft Type (B only towed): Taxi through TWY G to proceed to TWY C, then RWY 01/19 to THR 19, and turn 180° for take-off.

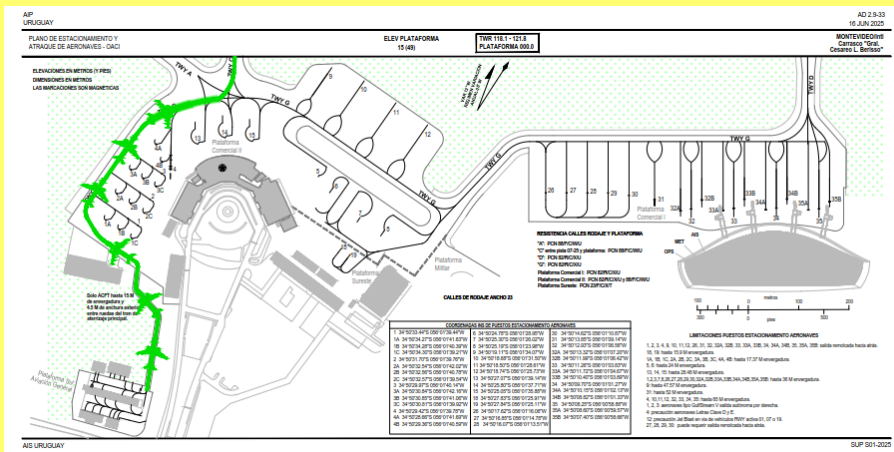
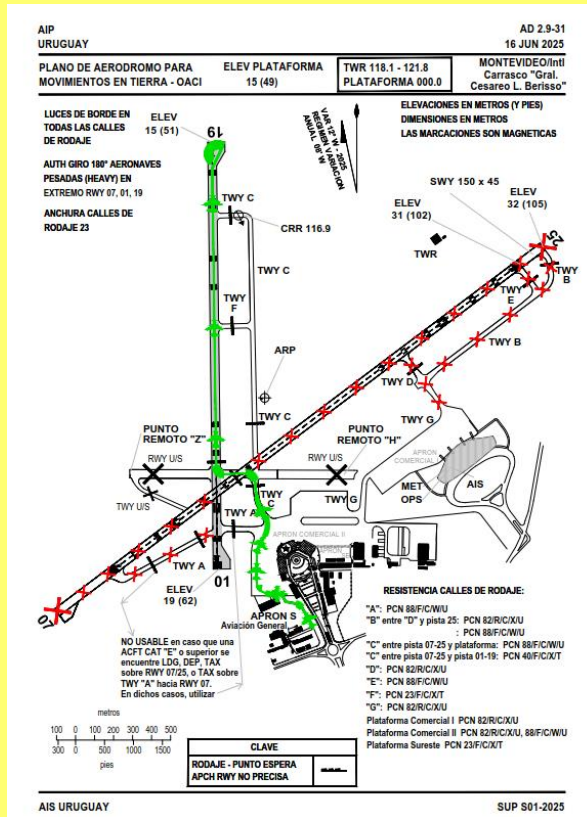


2. RUNWAY 19

2.1 Taxiing for take-off

2.1.10 From APRON S General Aviation:

- A or B Aircraft Type (B only towed): Taxi through TWY G to continue to TWY C, taxi through portion of RWY 07/25, then RWY 01/19 to THR 19, and turn 180° for take-off.

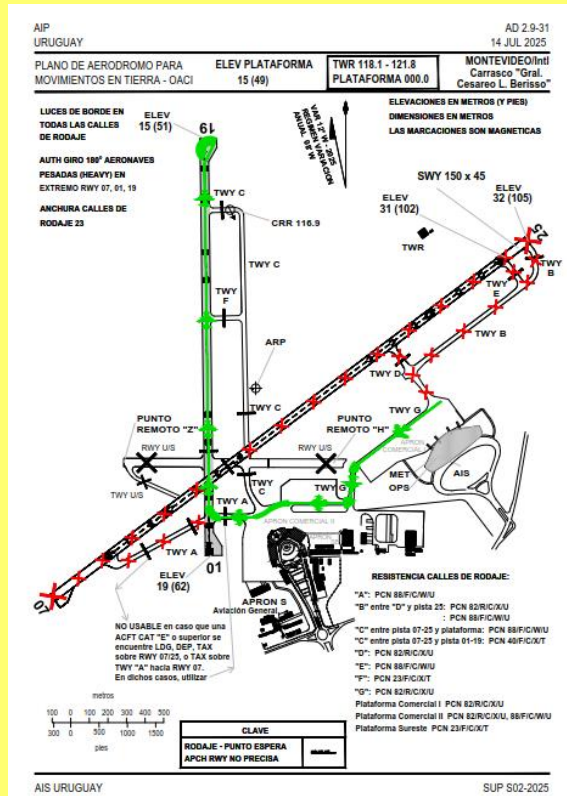


2. RUNWAY 19

2.1 Taxiing for take-off

2.1.11 From APRON Comercial I (Parking Stands 26 to 35) and APRON Comercial II (Parking Stands 9 to 12):

- A, B, C, D or E Aircraft Type: Taxi through TWY G to continue to TWY A, then RWY 01/19 to THR 19, and turn 180° for take-off.

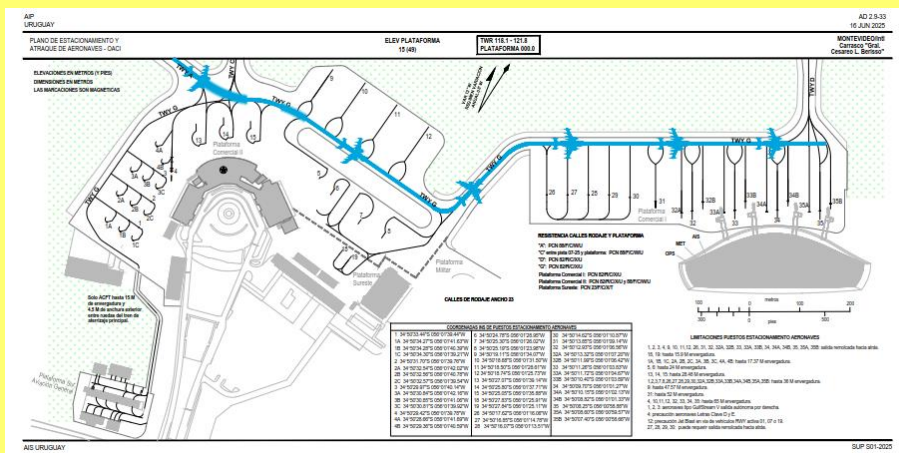
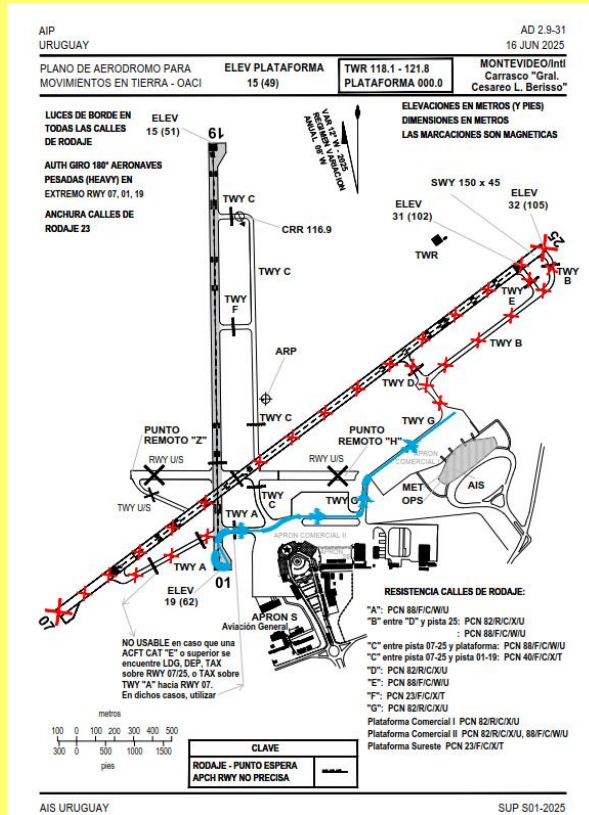


2. RUNWAY 19

2.2 Taxiing from landing

2.2.1 To APRON Comercial I (Parking Stands 26 to 35):

- A, B, C, D or E Aircraft Type: Backtrack RWY 01/19 (if required), taxi through TWY A, then TWY G and continue to PRKG APRON Comercial I.

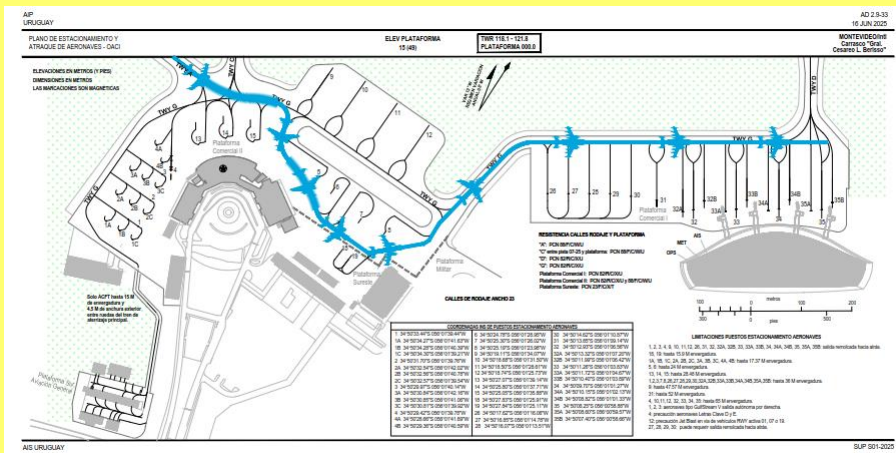
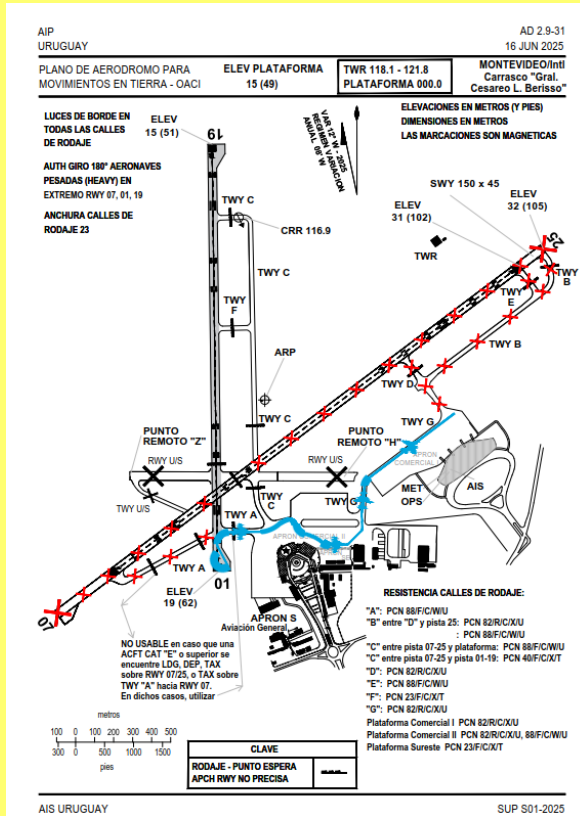


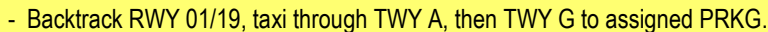
2. RUNWAY 19

2.2 Taxiing from landing

2.2.2 To APRON Comercial I (Parking Stands 26 to 35):

- A, B or C Aircraft Type: Backtrack RWY 01/19 (if required), taxi through TWY A, then TWY G to APRON SE, continue onto TWY G, then onto PRKG APRON Comercial I.



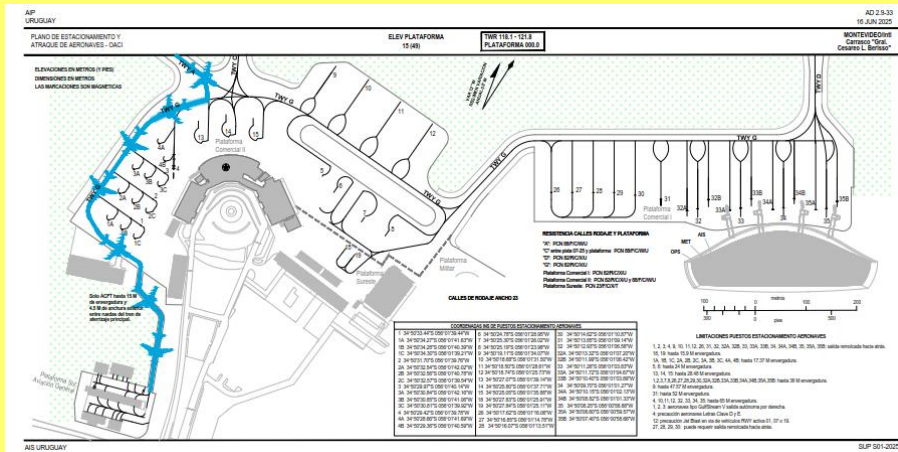
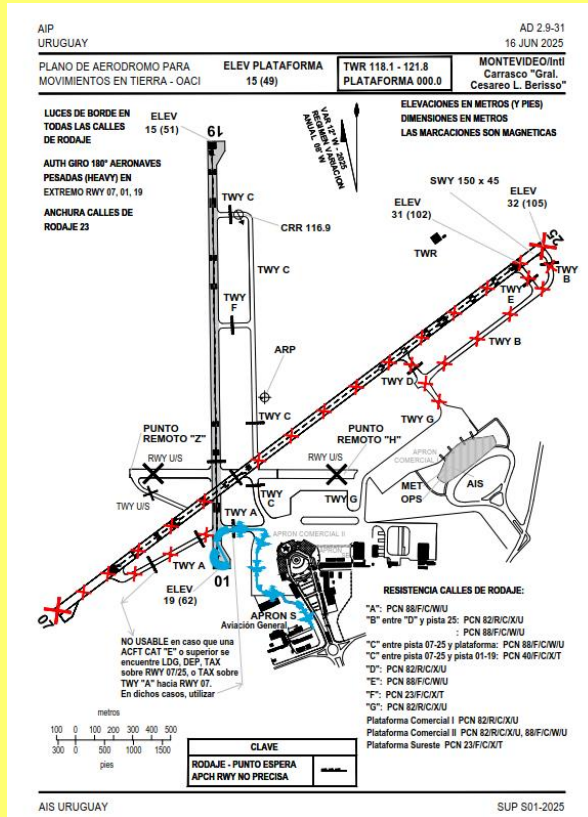


2. RUNWAY 19

2.2 Taxiing from landing

2.2.4 To APRON S General Aviation:

- Backtrack RWY 01/19, taxi through TWY A, then TWY G to assigned PRKG.



3. ADDITIONAL INFORMATION

- 3.1 The operation of F Aircraft Type is not permitted due to 01/19 runway limitations.
- 3.2 Engines shall not be started in parking stands 34 and 35 due to the effects of turbine jets in the works area.
- 3.3 The air operator must notify in a timely manner if it expects one of its aircraft to arrive with an inoperative APU so that PDS Operations can assign it other parking stands.
- 3.4 A Aircraft Type shall perform the engine check prior to take-off on taxiway G, lateral to parking stand 3A. Under these circumstances, possible delays are expected during simultaneous taxiing to and from Apron S.
- 3.5 If an aircraft is undergoing engine testing in the sector and another aircraft is taxiing toward Apron S, the latter must enter a parking position to yield to the former. The position shall be assigned by the apron management service.
- 3.6 Pilots on engine tests must take the necessary precautions to avoid affecting aircraft parked in nearby positions.

Replace AIP SUP S002-2025

***Remember to register the inclusion of AIRAC amendment on page GEN 0.3-1
Record of AIP Supplements***

→→→→→→→→→→